



SZABO SCANDIC

Part of Europa Biosite

Produktinformation



Forschungsprodukte & Biochemikalien



Zellkultur & Verbrauchsmaterial



Diagnostik & molekulare Diagnostik



Laborgeräte & Service

Weitere Information auf den folgenden Seiten!
See the following pages for more information!



Lieferung & Zahlungsart

siehe unsere [Liefer- und Versandbedingungen](#)

Zuschläge

- Mindermengenzuschlag
- Trockeneiszuschlag
- Gefahrgutzuschlag
- Expressversand

SZABO-SCANDIC HandelsgmbH

Quellenstraße 110, A-1100 Wien

T. +43(0)1 489 3961-0

F. +43(0)1 489 3961-7

mail@szabo-scandic.com

www.szabo-scandic.com

[linkedin.com/company/szaboscandic](https://www.linkedin.com/company/szaboscandic) 

Technically
Speaking

CEDARLANE[®] 
www.cedarlanelabs.com

Conveniently Delivering You Today's Innovations
for the Science of Tomorrow™

Anti-Human GLUT4 Polyclonal Antibody

CL8889AP
CL8889AP-S
Lot: 168921

DESCRIPTION:

Glucose transporter type 4 (GLUT4) is one of a family of transmembrane carrier proteins that enables facilitated glucose movement across the cell membrane. It is an insulin-regulated transporter, found primarily in adipose tissue and skeletal and cardiac muscle¹. Under conditions of low insulin, GLUT4 is sequestered in intracellular vesicles (endosomes) of fat and muscle cells. Following insulin stimulation due to rising glucose levels, GLUT4 is translocated from the vesicles to the plasma membrane allowing for intracellular glucose uptake². Recently it has been shown that GLUT4 is also present in the hippocampus. Researchers demonstrated that impairment of the insulin-dependent trafficking of the transporter can lead to depressive like behavior and cognitive dysfunction³.

PRESENTATION:

100 µg (**CL8889AP**) or 20 µg (**CL8889AP-S**) purified IgG buffered in PBS and 0.02% NaN₃. (Purified from serum via Affinity Chromatography). For maximum recovery of contents, spin down tube before use.

STORAGE/STABILITY:

Store at + 4°C. For long term storage, aliquot and freeze unused portion at -20°C in volumes appropriate for single usage. Avoid freeze/thaw cycles.

SPECIFICATION:

Immunogen: 17 amino acid synthetic peptide located at the N-terminus of human GLUT4.

Specificity: This antibody is specific for human GLUT4; it's also specific for rat based on sequence identity.

IgG Class: Rabbit IgG

Application: This antibody is suitable for use in ELISA, Western Blot (0.003µg/mL) and Immunohistochemistry with paraffin embedded sections (2.8 µg/mL). This antibody has not been tested in other applications.

Continued Overleaf.....

Visit our website for your local distributor.

CEDARLANE[®] 

www.cedarlanelabs.com

An ISO 9001:2000 and ISO 13485:2003
registered company.

In CANADA: Toll Free: 1-800-268-5058

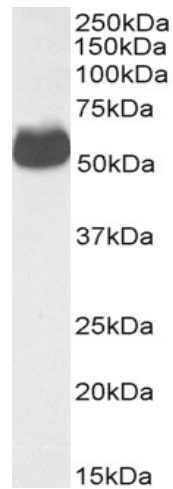
4410 Paletta Court, Burlington, ON L7L 5R2 ph: (289) 288-0001, fax: (289) 288-0020
e-mail: general@cedarlanelabs.com

In the USA: Toll Free: 1-800-721-1644

1210 Turrentine Street, Burlington, NC 27215 ph: (336) 513-5135, fax: (336) 513-5138
e-mail: service@cedarlanelabs.com

TEST RESULTS:

Western Blot:



CL8889AP (0.003 $\mu\text{g/ml}$) staining of a human heart lysate (35 μg protein in RIPA buffer). Primary incubation was 1 hour. Detected by chemiluminescence.

N.B. Appropriate control samples should always be included in any labeling studies.

* For optimal results in various applications, it is recommended that each investigator determine dilutions appropriate for individual use.

REFERENCES:

1. James DE, Brown R, Navarro J, Pilch PF. (1988) **Insulin-regulatable tissues express a unique insulin-sensitive glucose transport protein.** *Nature.* 333(6169):183-5.
2. Cushman SW, Wardzala LJ. (1980) **Potential mechanism of insulin action on glucose transport in the isolated rat adipose cell. Apparent translocation of intracellular transport systems to the plasma membrane.** *J Biol Chem.* 255(10):4758-62.
3. Patel SS, Udayabanu M. (2014) **Urtica dioica extract attenuates depressive like behavior and associative memory dysfunction in dexamethasone induced diabetic mice.** *Metab Brain Dis.* 29(1):121-30.

For Research Use Only