



# SZABO SCANDIC

Part of Europa Biosite

## Produktinformation



Forschungsprodukte & Biochemikalien



Zellkultur & Verbrauchsmaterial



Diagnostik & molekulare Diagnostik



Laborgeräte & Service

Weitere Information auf den folgenden Seiten!  
See the following pages for more information!



### Lieferung & Zahlungsart

siehe unsere [Liefer- und Versandbedingungen](#)

### Zuschläge

- Mindermengenzuschlag
- Trockeneiszuschlag
- Gefahrgutzuschlag
- Expressversand

### SZABO-SCANDIC HandelsgmbH

Quellenstraße 110, A-1100 Wien

T. +43(0)1 489 3961-0

F. +43(0)1 489 3961-7

[mail@szabo-scandic.com](mailto:mail@szabo-scandic.com)

[www.szabo-scandic.com](http://www.szabo-scandic.com)

[linkedin.com/company/szaboscandic](https://www.linkedin.com/company/szaboscandic) 

## GFM9 Recombinant Mouse SCF

### Description

Stem Cell Factor (SCF) is a cytokine made by fibroblasts and endothelial cells. SCF binds to the receptor c-Kit/CD117 and plays a critical role in the maintenance, survival, and differentiation of hematopoietic stem cells. Human SCF shows no activity on mouse cells, but mouse and rat SCF are active on human cells.

<b>Length</b>	165 aa
<b>Molecular Weight</b>	18.6 kDa
<b>Source</b>	E. coli
<b>Accession Number</b>	P21583
<b>Purity</b>	≥95% determined by reducing and non-reducing SDS-PAGE

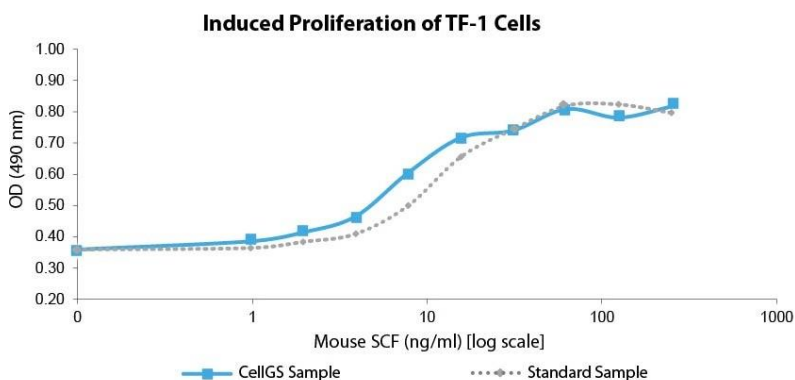
### Specifications

<b>Alternative Names</b>	Stem Cell Factor, c-Kit Ligand, KL, steel factor, MGF
<b>Biological Activity</b>	Mouse SCF is fully biologically active when compared to standard. The activity is determined by the dose-dependent proliferation of TF-1 cells and it is typically less than 20 ng/ml. This corresponds to an expected specific activity of $5 \times 10^4$ units/mg.
<b>Endotoxin Level</b>	≤1.00 EU/μg as measured by kinetic LAL
<b>Formulation</b>	Lyophilized from a sterile (0.2 micron) filtered aqueous solution containing 20 mM sodium phosphate, pH 6.5
<b>AA Sequence</b>	MEGICRNRVT NNVKDVTKLV ANLPKDYMIT LKYVPGMDVL PSHCWISEMV VQLSDSLTDL LDKFSNISEG LSNYSIIDKL VNIIVDDLVEC VKENSSKDLK KSFKSPEPRL FTPEEFFRIF NRSIDAFKDF VVASETSDCV VSSTLSPEKD SRVSVTKPFM LPPVA

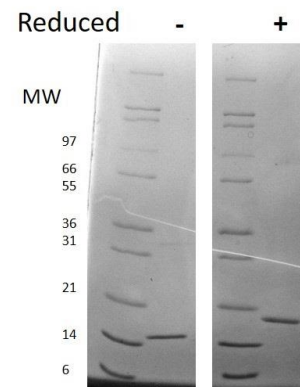
### Preparation and Storage

<b>Reconstitution</b>	Centrifuge vial before opening. When reconstituting the product, gently pipet and wash down the sides of the vial to ensure full recovery of the protein into solution. It is recommended to reconstitute the lyophilized product with sterile water at 0.1 mg/ml, which can be further diluted into other aqueous solutions.
<b>Stability and Storage</b>	12 months from date of receipt when stored at -20°C to -80°C as supplied. 1 month when stored at 4°C after reconstituting as directed. 3 months when stored at -20°C to -80°C after reconstituting as directed.

### Data



Induced proliferation of TF-1 cells assay for Mouse SCF. Cell proliferation was measured to calculate the ED50, which is as expected less than 20 ng/ml.



Non-reducing (-) and reducing (+) conditions in a 4 - 20% Tris-Glycine gel stained with Coomassie Blue. 1 μg of protein was loaded in each lane. Mouse SCF has a predicted Mw of 18.4 kDa.