



SZABO SCANDIC

Part of Europa Biosite

Produktinformation



Forschungsprodukte & Biochemikalien



Zellkultur & Verbrauchsmaterial



Diagnostik & molekulare Diagnostik



Laborgeräte & Service

Weitere Information auf den folgenden Seiten!
See the following pages for more information!



Lieferung & Zahlungsart

siehe unsere [Liefer- und Versandbedingungen](#)

Zuschläge

- Mindermengenzuschlag
- Trockeneiszuschlag
- Gefahrgutzuschlag
- Expressversand

SZABO-SCANDIC HandelsgmbH

Quellenstraße 110, A-1100 Wien

T. +43(0)1 489 3961-0

F. +43(0)1 489 3961-7

mail@szabo-scandic.com

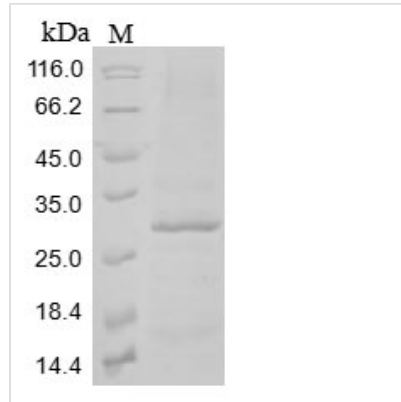
www.szabo-scandic.com

[linkedin.com/company/szaboscandic](https://www.linkedin.com/company/szaboscandic) 



Recombinant Mouse C-type lectin domain family 12 member A(Clec12a),partial

Product Code	CSB-BP709488MO
Relevance	Cell surface receptor that modulates signaling cascades and mediates tyrosine phosphorylation of target MAP kinases.
Abbreviation	Clec12a
Storage	The shelf life is related to many factors, storage state, buffer ingredients, storage temperature and the stability of the protein itself. Generally, the shelf life of liquid form is 6 months at -20°C/-80°C. The shelf life of lyophilized form is 12 months at -20°C/-80°C.
Uniprot No.	Q504P2
Product Type	Recombinant Protein
Immunogen Species	Mus musculus (Mouse)
Purity	Greater than 85% as determined by SDS-PAGE.
Sequence	YTTLATEMIKSNQLQRAKEELQENVFLQLKHNLNSSKKIKNLSAMLQSTATQLC RELYSKEPEHKCKPCPKGSEWYKDSCYSQLNQYGTWQESVMAC SARNASLL KVKNKDVLEFIKYKKLRYFWLALLPRKDRYQYPLSEKMF LSEESERSTDDIDKK YCGYIDRVNVYYTYCTDENNIICEETASKVQLESVLNGLPEDSR
Lead Time	3-7 business days
Research Area	Others
Source	Baculovirus
Gene Names	Clec12a
Protein Names	C-type lectin-like molecule 1 (CLL-1) (Myeloid inhibitory C-type lectin-like receptor) (MICL)
Expression Region	65-267aa
Notes	Repeated freezing and thawing is not recommended. Store working aliquots at 4°C for up to one week.
Tag Info	N-terminal 10xHis-tagged and C-terminal Myc-tagged
Mol. Weight	27.8 kDa
Protein Description	Extracellular Domain
Image	



(Tris-Glycine gel) Discontinuous SDS-PAGE (reduced) with 5% enrichment gel and 15% separation gel.

Reconstitution

We recommend that this vial be briefly centrifuged prior to opening to bring the contents to the bottom. Please reconstitute protein in deionized sterile water to a concentration of 0.1-1.0 mg/mL. We recommend to add 5-50% of glycerol (final concentration) and aliquot for long-term storage at -20°C/-80°C. Our default final concentration of glycerol is 50%. Customers could use it as reference.