



SZABO SCANDIC

Part of Europa Biosite

Produktinformation



Forschungsprodukte & Biochemikalien



Zellkultur & Verbrauchsmaterial



Diagnostik & molekulare Diagnostik



Laborgeräte & Service

Weitere Information auf den folgenden Seiten!
See the following pages for more information!



Lieferung & Zahlungsart

siehe unsere [Liefer- und Versandbedingungen](#)

Zuschläge

- Mindermengenzuschlag
- Trockeneiszuschlag
- Gefahrgutzuschlag
- Expressversand

SZABO-SCANDIC Handels GmbH

Quellenstraße 110, A-1100 Wien

T. +43(0)1 489 3961-0

F. +43(0)1 489 3961-7

mail@szabo-scandic.com

www.szabo-scandic.com

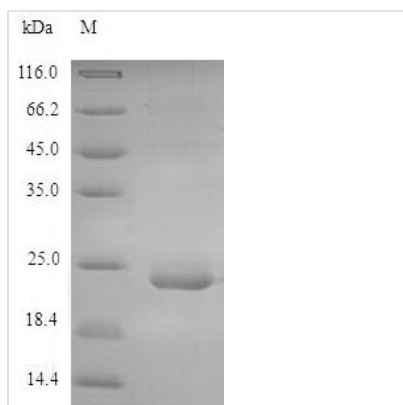
[linkedin.com/company/szaboscandic](https://www.linkedin.com/company/szaboscandic)





Recombinant Mouse C-type lectin domain family 4 member E (Clec4e), partial

Product Code	CSB-EP870809MO
Relevance	C-type lectin that functions as cell-surface receptor for a wide variety of ligands such as damaged cells, fungi and mycobacteria. Plays a role in the recognition of pathogenic fungi, such as <i>Candida albicans</i> . The detection of mycobacteria is via trehalose 6,6'-dimycolate (TDM), a cell wall glycolipid. Specifically recognizes alpha-mannose residues on pathogenic fungi of the genus <i>Malassezia</i> . Recognizes also SAP130, a nuclear protein, that is released by dead or dying cells. Transduces signals through an ITAM-containing adapter protein, Fc receptor gamma chain /FCER1G. Induces secretion of inflammatory cytokines through a pathway that depends on SYK, CARD9 and NF-kappa-B.
Storage	The shelf life is related to many factors, storage state, buffer ingredients, storage temperature and the stability of the protein itself. Generally, the shelf life of liquid form is 6 months at -20°C/-80°C. The shelf life of lyophilized form is 12 months at -20°C/-80°C.
Uniprot No.	Q9R0Q8
Alias	C-type lectin superfamily member 9 Macrophage-inducible C-type lectin
Product Type	Recombinant Protein
Immunogen Species	Mus musculus (Mouse)
Purity	Greater than 90% as determined by SDS-PAGE.
Sequence	TYRSSQISGQNLQPHRNIKELSCYSEASGSVKNCCPLNWKHYQSSCYFFSTTT LTWSSSLKNCSDMGAHLVVIDTQEEQEFLFRTKPKRKEFYIGLTDQVVEGQW QWVDDTPFTESLSFDWAGEPNNIVLVEDCATIRDSSNSRKNWNDIPCFYSMP WICEMPEISPLD
Research Area	Immunology
Source	E.coli
Target Names	Clec4e
Expression Region	46-214aa
Notes	Repeated freezing and thawing is not recommended. Store working aliquots at 4°C for up to one week.
Tag Info	N-terminal 6xHis-tagged
Mol. Weight	23.6kDa
Protein Length	Extracellular Domain
Image	



(Tris-Glycine gel) Discontinuous SDS-PAGE (reduced) with 5% enrichment gel and 15% separation gel.

Reconstitution

We recommend that this vial be briefly centrifuged prior to opening to bring the contents to the bottom. Please reconstitute protein in deionized sterile water to a concentration of 0.1-1.0 mg/mL. We recommend to add 5-50% of glycerol (final concentration) and aliquot for long-term storage at -20°C/-80°C. Our default final concentration of glycerol is 50%. Customers could use it as reference.

Shelf Life

The shelf life is related to many factors, storage state, buffer ingredients, storage temperature and the stability of the protein itself. Generally, the shelf life of liquid form is 6 months at -20°C/-80°C. The shelf life of lyophilized form is 12 months at -20°C/-80°C.