



SZABO SCANDIC

Part of Europa Biosite

Produktinformation



Forschungsprodukte & Biochemikalien



Zellkultur & Verbrauchsmaterial



Diagnostik & molekulare Diagnostik



Laborgeräte & Service

Weitere Information auf den folgenden Seiten!
See the following pages for more information!



Lieferung & Zahlungsart

siehe unsere [Liefer- und Versandbedingungen](#)

Zuschläge

- Mindermengenzuschlag
- Trockeneiszuschlag
- Gefahrgutzuschlag
- Expressversand

SZABO-SCANDIC Handels GmbH

Quellenstraße 110, A-1100 Wien

T. +43(0)1 489 3961-0

F. +43(0)1 489 3961-7

mail@szabo-scandic.com

www.szabo-scandic.com

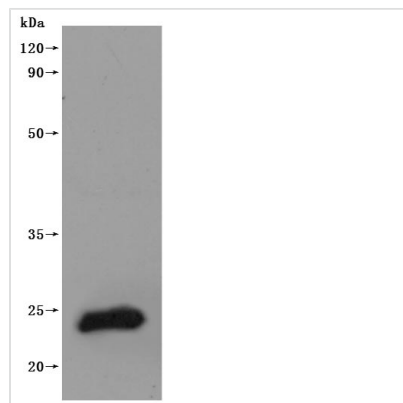
[linkedin.com/company/szaboscandic](https://www.linkedin.com/company/szaboscandic)



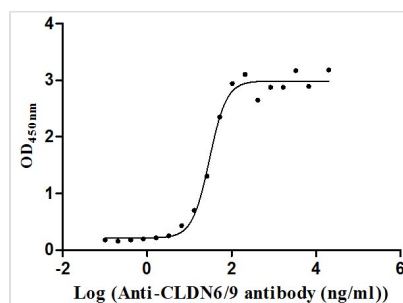


Recombinant Human Claudin-9(CLDN9)-VLPs (Active)

Product Code	CSB-MP005511HU
Storage	The shelf life is related to many factors, storage state, buffer ingredients, storage temperature and the stability of the protein itself. Generally, the shelf life of liquid form is 6 months at -20°C/-80°C. The shelf life of lyophilized form is 12 months at -20°C/-80°C.
Uniprot No.	O95484
Form	Lyophilized powder
Storage Buffer	Lyophilized from a 0.2 µm filtered PBS, 6% Trehalose, pH 7.4
Product Type	Recombinant Protein
Immunogen Species	Homo sapiens (Human)
Biological Activity	Measured by its binding ability in a functional ELISA. Immobilized Human CLDN9 at 10 µg/mL can bind Anti-CLDN6/9 recombinant antibody (CSB-RA005508MA1HU), the EC ₅₀ is 24.93-35.47 ng/mL.
Sequence	MASTGLELLGMTLAVLGWLGTLVSCALPLWKVTAFIGNSIVVAQVVWEGLWM SCVVQSTGQMCKVYDSLLALPQDLQAARALCVIALLLALLGLLVAITGAQCTT CVEDEGAKARIVLTAGVILLLAGILVLIPVCWTAHAIQDFYNPLVAEALKRELGA SLYLGWAAAALLMLGGLLCCTCPPPQVERPRGPRLGYSIPSRSGASGLDKR DYV
Lead Time	Basically, we can dispatch the products out in 3-7 working days after receiving your orders. Delivery time may differ from different purchasing way or location, please kindly consult your local distributors for specific delivery time.
Source	Mammalian cell
Gene Names	CLDN9
Expression Region	1-217aa
Notes	Repeated freezing and thawing is not recommended. Store working aliquots at 4°C for up to one week.
Tag Info	C-terminal 10xHis-tagged (This tag can be tested only under denaturing conditions)
Mol. Weight	24.2 kDa
Protein Description	Full Length
Image	



CSB-MP005511HU is detected by Mouse anti-6*His monoclonal antibody.



Activity

Measured by its binding ability in a functional ELISA. Immobilized Human CLDN9 at 10 µg/ml can bind Anti-CLDN6/9 recombinant antibody (CSB-RA005508MA1HU), the EC₅₀ is 24.93-35.47 ng/mL.

Description

This Human Claudin-9 (CLDN9) recombinant protein was produced in Mammalian cell, where the gene sequence encoding Human CLDN9 (1-217aa) was expressed with the C-terminal 10xHis tag. The activity was validated. In addition, this Human CLDN9 recombinant protein was developed through the Virus-Like Particles (VLPs) Platform. It is a four-pass transmembrane protein.

CLDN9 (Claudin-9) is located on human chromosome 16p13.3, with a full length of 651 bases. The CLDN9 gene is overexpressed in the blood, pituitary and brain, and is highly expressed in endometrial cancer, liver cancer and gastric cancer cell lines. CLDN9 protein is mainly Localized at cell tight junctions, cell membranes and channel proteins.

CLDN9 is a tight junction protein. Abnormal expression of CLDN9 will lead to impaired tight junctions function and reduced barrier function, resulting in increased tissue permeability, which will eventually lead to many diseases including hereditary, allergic diseases, infectious diseases of various systems and even tumors. Therefore, CLDN9 is regarded as a potential target for the treatment of cancer or other diseases.

Endotoxin

Less than 1.0 EU/ug as determined by LAL method.

Reconstitution

We recommend that this vial be briefly centrifuged prior to opening to bring the contents to the bottom. Please reconstitute protein in deionized sterile water to a concentration of 0.1-1.0 mg/mL. We recommend to add 5-50% of glycerol (final concentration) and aliquot for long-term storage at -20~-80°. Our default final concentration of glycerol is 50%. Customers could use it as reference.