



SZABO SCANDIC

Part of Europa Biosite

Produktinformation



Forschungsprodukte & Biochemikalien



Zellkultur & Verbrauchsmaterial



Diagnostik & molekulare Diagnostik



Laborgeräte & Service

Weitere Information auf den folgenden Seiten!
See the following pages for more information!



Lieferung & Zahlungsart

siehe unsere [Liefer- und Versandbedingungen](#)

Zuschläge

- Mindermengenzuschlag
- Trockeneiszuschlag
- Gefahrgutzuschlag
- Expressversand

SZABO-SCANDIC HandelsgmbH

Quellenstraße 110, A-1100 Wien

T. +43(0)1 489 3961-0

F. +43(0)1 489 3961-7

mail@szabo-scandic.com

www.szabo-scandic.com

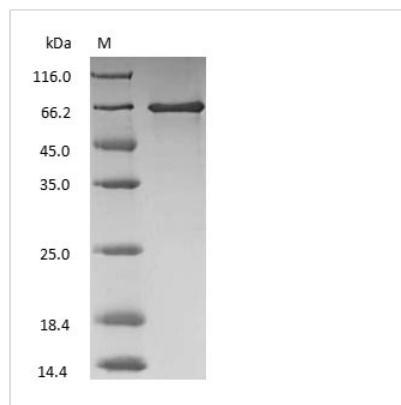
[linkedin.com/company/szaboscandic](https://www.linkedin.com/company/szaboscandic) 



Bovine Serum Albumin

Product Code	CSB-NP009501B
Relevance	Serum albumin, the main protein of plasma, has a good binding capacity for water, Ca(2+), Na(+), K(+), fatty acids, hormones, bilirubin and drugs. Its main function is the regulation of the colloidal osmotic pressure of blood. Major zinc transporter in plasma, typically binds about 80% of all plasma zinc.
Storage	Aliquot and store at -20°C or -80°C. Avoid repeated freeze/thaw cycles.
Tested Applications	ELISA, WB, SDS-PAGE
Form	Liquid
Storage Buffer	PBS, pH 7.4
Alias	N/A
Product Type	Native Protein
Sensitivity	Not test
Purity	>95% (SDS-PAGE)
Sequence	Full length protein
Research Area	Cardiovascular/Stem Cells Lineage/Cancer
Source	Purified from Bovine serum
Protein Names	Bovine Serum Albumin

Image



(Tris-Glycine gel) Discontinuous SDS-PAGE (reduced) with 5% enrichment gel and 15% separation gel.