



# SZABO SCANDIC

Part of Europa Biosite

## Produktinformation



Forschungsprodukte & Biochemikalien



Zellkultur & Verbrauchsmaterial



Diagnostik & molekulare Diagnostik



Laborgeräte & Service

Weitere Information auf den folgenden Seiten!  
See the following pages for more information!



### Lieferung & Zahlungsart

siehe unsere [Liefer- und Versandbedingungen](#)

### Zuschläge

- Mindermengenzuschlag
- Trockeneiszuschlag
- Gefahrgutzuschlag
- Expressversand

### SZABO-SCANDIC Handels GmbH

Quellenstraße 110, A-1100 Wien

T. +43(0)1 489 3961-0

F. +43(0)1 489 3961-7

[mail@szabo-scandic.com](mailto:mail@szabo-scandic.com)

[www.szabo-scandic.com](http://www.szabo-scandic.com)

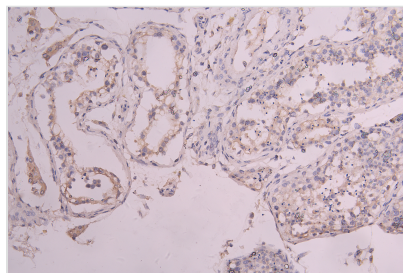
[linkedin.com/company/szaboscandic](https://www.linkedin.com/company/szaboscandic) 



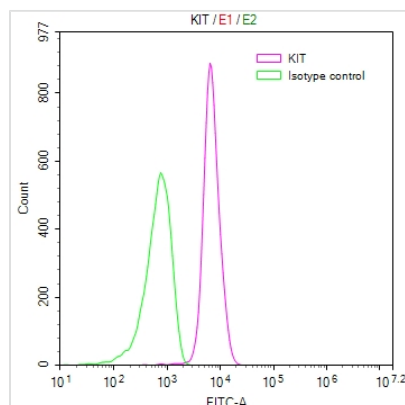
# KIT Recombinant Monoclonal Antibody

|                            |   |
|----------------------------|---|
| <b>Product Code</b>        | CSB-RA012375MA1HU   |
| <b>Storage</b>             | Upon receipt, store at -20°C or -80°C. Avoid repeated freeze.   |
| <b>Uniprot No.</b>         | P10721  |
| <b>Immunogen</b>           | Recombinant Human KIT protein   |
| <b>Species Reactivity</b>  | Human   |
| <b>Tested Applications</b> | ELISA, IHC, FC; Recommended dilution: IHC:1:50-1:200, FC:1:50-1:200                                     |
| <b>Form</b>                | Liquid  |
| <b>Conjugate</b>           | Non-conjugated  |
| <b>Storage Buffer</b>      | Preservative: 0.03% Proclin 300<br>Constituents: 50% Glycerol, 0.01M PBS, PH 7.4                        |
| <b>Purification Method</b> | Affinity-chromatography   |
| <b>Isotype</b>             | hIgG1   |
| <b>Clonality</b>           | Monoclonal  |
| <b>Product Type</b>        | Recombinant Antibody  |
| <b>Immunogen Species</b>   | Homo sapiens (Human)  |
| <b>Research Area</b>       | Neuroscience?Cancer;Developmental biology?Tags & Cell Markers?Immunology;Signal transduction?Stem cells |
| <b>Target Names</b>        | KIT   |
| <b>Clone No.</b>           | 6D4   |

## Image



IHC image of CSB-RA012375MA1HU diluted at 1:100 and staining in paraffin-embedded human testis tissue performed on a Leica Bond<sup>TM</sup> system. After dewaxing and hydration, antigen retrieval was mediated by high pressure in a citrate buffer (pH 6.0). Section was blocked with 10% normal goat serum 30min at RT. Then primary antibody (1% BSA) was incubated at 4°C overnight. The primary is detected by a Goat anti-human polymer IgG labeled by HRP and visualized using 0.05% DAB.



Overlay Peak curve showing JK cells stained with CSB-RA012375MA1HU (red line) at 1:100. The cells were fixed in 4% formaldehyde and permeated by 0.2% TritonX-100. Then 10% normal goat serum to block non-specific protein-protein interactions followed by the antibody (1ug/1\*10<sup>6</sup>cells) for 45min at 4?. The secondary antibody used was FITC-conjugated Goat Anti-human IgG(H+L) at 1:200 dilution for 35min at 4?.Control antibody (green line) was human IgG (1ug/1\*10<sup>6</sup>cells) used under the same conditions. Acquisition of >10,000 events was performed.

## Usage

For Research Use Only. Not for use in diagnostic or therapeutic procedures.