



SZABO SCANDIC

Part of Europa Biosite

Produktinformation



Forschungsprodukte & Biochemikalien



Zellkultur & Verbrauchsmaterial



Diagnostik & molekulare Diagnostik



Laborgeräte & Service

Weitere Information auf den folgenden Seiten!
See the following pages for more information!



Lieferung & Zahlungsart

siehe unsere [Liefer- und Versandbedingungen](#)

Zuschläge

- Mindermengenzuschlag
- Trockeneiszuschlag
- Gefahrgutzuschlag
- Expressversand

SZABO-SCANDIC HandelsgmbH

Quellenstraße 110, A-1100 Wien

T. +43(0)1 489 3961-0

F. +43(0)1 489 3961-7

mail@szabo-scandic.com

www.szabo-scandic.com

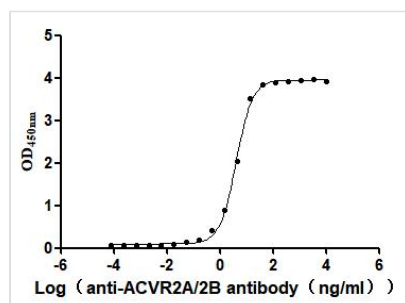
[linkedin.com/company/szaboscandic](https://www.linkedin.com/company/szaboscandic) 



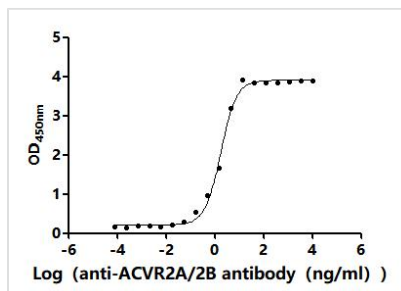
ACVR2A&ACVR2B Recombinant Monoclonal Antibody

Product Code	CSB-RA623829MA1HU
Storage	Upon receipt, store at -20°C or -80°C. Avoid repeated freeze.
Uniprot No.	P27037/Q13705
Immunogen	Recombinant Human ACVR2A&ACVR2B protein
Species Reactivity	Human, Mouse
Tested Applications	ELISA, IHC, IF; Recommended dilution: ELISA:1:5000-1:50000, IHC:1:50-1:200, IF:1:50-1:200
Form	Liquid
Conjugate	Non-conjugated
Storage Buffer	Preservative: 0.03% Proclin 300 Constituents: 50% Glycerol, 0.01M PBS, PH 7.4
Purification Method	Affinity-chromatography
Isotype	hIgG1
Clonality	Monoclonal
Product Type	Recombinant Antibody
Immunogen Species	Homo sapiens (Human)
Purity	Greater than 95% as determined by SEC-HPLC.
Research Area	Cancer;Metabolism;Signal transduction?Stem cells
Target Names	ACVR2A&ACVR2B
Clone No.	7E5

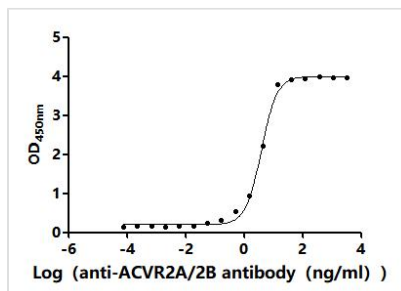
Image



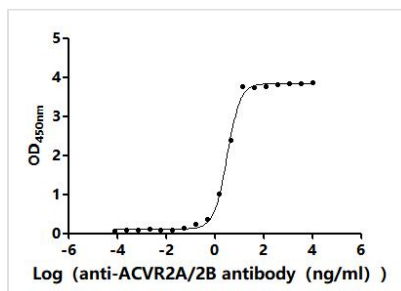
The Binding Activity of Human ACVR2A with Anti-ACVR2A&ACVR2B recombinant antibody Activity: Measured by its binding ability in a functional ELISA. Immobilized Human ACVR2A?CSB-MP001260HU1?at 2 µg/mL can bind Anti-ACVR2A&ACVR2B recombinant antibody . The EC₅₀ is 3.848-4.375 ng/mL.



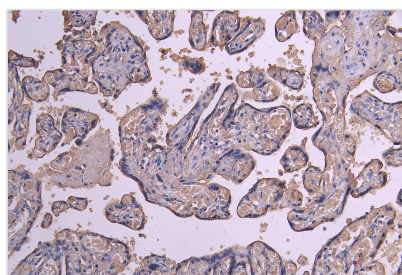
The Binding Activity of Mouse ACVR2A with Anti-ACVR2A&ACVR2B recombinant antibody Activity: Measured by its binding ability in a functional ELISA. Immobilized Mouse ACVR2A?CSB-MP001260MO1? at 2 μ g/mL can bind Anti-ACVR2A&ACVR2B recombinant antibody. The EC₅₀ is 1.562-1.966 ng/mL.



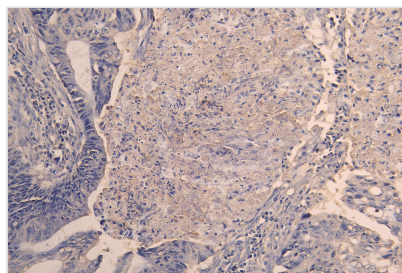
The Binding Activity of Mouse Acvr2b with Anti-ACVR2A&ACVR2B recombinant antibody Activity: Measured by its binding ability in a functional ELISA. Immobilized Mouse Acvr2b?CSB-MP001261MO1? at 2 μ g/mL can bind Anti-ACVR2A&ACVR2B recombinant antibody. The EC₅₀ is 3.560-4.235 ng/mL.



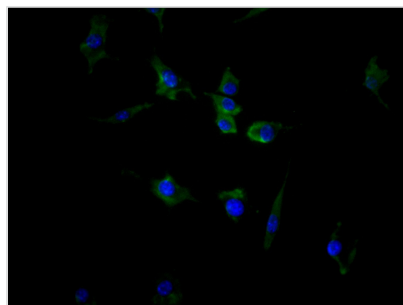
The Binding Activity of Human ACVR2B with Anti-ACVR2A&ACVR2B recombinant antibody Activity: Measured by its binding ability in a functional ELISA. Immobilized Human ACVR2B?CSB-MP623829HU? at 2 μ g/mL can bind Anti-ACVR2A&ACVR2B recombinant antibody. The EC₅₀ is 2.983-3.438 ng/mL.



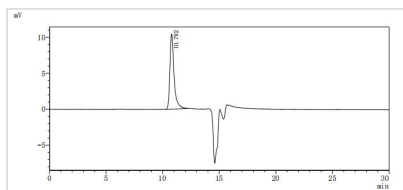
IHC image of CSB-RA623829MA1HU diluted at 1:200 and staining in paraffin-embedded human placenta tissue performed on a Leica BondTM system. After dewaxing and hydration, antigen retrieval was mediated by high pressure in a citrate buffer (pH 6.0). Section was blocked with 10% normal goat serum 30min at RT. Then primary antibody (1% BSA) was incubated at 4°C overnight. The primary is detected by a Goat anti-human polymer IgG labeled by HRP and visualized using 0.05% DAB.



IHC image of CSB-RA623829MA1HU diluted at 1:200 and staining in paraffin-embedded human colon cancer performed on a Leica BondTM system. After dewaxing and hydration, antigen retrieval was mediated by high pressure in a citrate buffer (pH 6.0). Section was blocked with 10% normal goat serum 30min at RT. Then primary antibody (1% BSA) was incubated at 4°C overnight. The primary is detected by a Goat anti-human polymer IgG labeled by HRP and visualized using 0.05% DAB.



Immunofluorescence staining of SH-SY5Y cell with CSB-RA623829MA1HU at 1:100, counter-stained with DAPI. The cells were fixed in 4% formaldehyde and blocked in 10% normal Goat Serum. The cells were then incubated with the antibody overnight at 4C. The secondary antibody was FITC-conjugated AffiniPure Goat Anti-Human IgG(H+L).



The purity of ACVR2A&ACVR2B was greater than 95% as determined by SEC-HPLC

Usage

For Research Use Only. Not for use in diagnostic or therapeutic procedures.