



SZABO SCANDIC

Part of Europa Biosite

Produktinformation



Forschungsprodukte & Biochemikalien



Zellkultur & Verbrauchsmaterial



Diagnostik & molekulare Diagnostik



Laborgeräte & Service

Weitere Information auf den folgenden Seiten!
See the following pages for more information!



Lieferung & Zahlungsart

siehe unsere [Liefer- und Versandbedingungen](#)

Zuschläge

- Mindermengenzuschlag
- Trockeneiszuschlag
- Gefahrgutzuschlag
- Expressversand

SZABO-SCANDIC HandelsgmbH

Quellenstraße 110, A-1100 Wien

T. +43(0)1 489 3961-0

F. +43(0)1 489 3961-7

mail@szabo-scandic.com

www.szabo-scandic.com

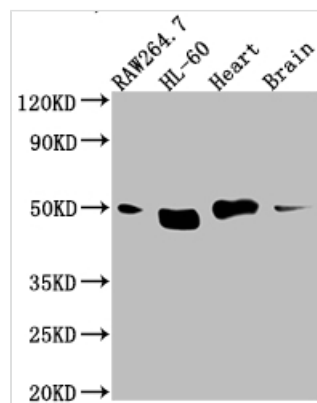
[linkedin.com/company/szaboscandic](https://www.linkedin.com/company/szaboscandic) 



TINF2 Recombinant Monoclonal Antibody

| | |
|----------------------------|--|
| Product Code | CSB-RA997969A0HU |
| Storage | Upon receipt, store at -20°C or -80°C. Avoid repeated freeze. |
| Uniprot No. | Q9BSI4 |
| Immunogen | A synthesized peptide derived from human Tin2 |
| Species Reactivity | Human, Mouse, Rat |
| Tested Applications | ELISA, WB; Recommended dilution: WB:1:500-1:5000 |
| Relevance | Component of the shelterin complex (telosome) that is involved in the regulation of telomere length and protection. Shelterin associates with arrays of double-stranded TTAGGG repeats added by telomerase and protects chromosome ends; without its protective activity, telomeres are no longer hidden from the DNA damage surveillance and chromosome ends are inappropriately processed by DNA repair pathways. Plays a role in shelterin complex assembly. Isoform 1 may have additional role in tethering telomeres to the nuclear matrix. |
| Form | Liquid |
| Conjugate | Non-conjugated |
| Storage Buffer | Rabbit IgG in phosphate buffered saline, pH 7.4, 150mM NaCl, 0.02% sodium azide and 50% glycerol. |
| Purification Method | Affinity-chromatography |
| Isotype | Rabbit IgG |
| Clonality | Monoclonal |
| Product Type | Recombinant Antibody |
| Immunogen Species | Homo sapiens (Human) |
| Research Area | Epigenetics and Nuclear Signaling |
| Gene Names | TINF2 |
| Clone No. | 5G11 |

Image



Western Blot

Positive WB detected in: RAW264.7 whole cell lysate, HL-60 whole cell lysate, Mouse Heart whole cell lysate, Mouse Brain whole cell lysate

All lanes: Tin2 antibody at 1:1000

Secondary

Goat polyclonal to rabbit IgG at 1/50000 dilution

Predicted band size: 51, 40, 16 kDa

Observed band size: 51 kDa



Description

TINF2 is the encoding gene for TIN2, which acts as an adaptor crucial for the recruitment, formation, and stabilization of the shelterin complex. It mediates the localization of three key DNA interacting proteins (TRF1, TRF2, and POT1) at telomeres. It is essential for shelterin assembly at the telomere and is an important regulator of telomere length. Mutations in TINF2 cause short-telomere syndromes. Deletion of TIN2 is embryonically lethal, and conditional knockout of TIN2 in mouse embryo fibroblasts (MEFs) leads to growth arrest. Upregulation of TIN2 has been commonly observed in many human malignancies.

The recombinant TINF2 antibody production commenced with the obtaining of genes encoding antibody against TINF2. Antibody genes were obtained by sequencing and screening DNA reversely transcribed from RNA that was extracted from the B cells isolated from immunized animals. These genes were cloned into plasma vectors and subsequently transfected into a mammalian cell line for production. The product is the recombinant TINF2 antibody. It underwent purification using Affinity-chromatography from the cell culture medium. This recombinant TINF2 antibody has been validated to detect the TINF2 protein from Human, Mouse, Rat in the ELISA, WB.