



SZABO SCANDIC

Part of Europa Biosite

Produktinformation



Forschungsprodukte & Biochemikalien



Zellkultur & Verbrauchsmaterial



Diagnostik & molekulare Diagnostik



Laborgeräte & Service

Weitere Information auf den folgenden Seiten!
See the following pages for more information!



Lieferung & Zahlungsart

siehe unsere [Liefer- und Versandbedingungen](#)

Zuschläge

- Mindermengenzuschlag
- Trockeneiszuschlag
- Gefahrgutzuschlag
- Expressversand

SZABO-SCANDIC Handels GmbH

Quellenstraße 110, A-1100 Wien

T. +43(0)1 489 3961-0

F. +43(0)1 489 3961-7

mail@szabo-scandic.com

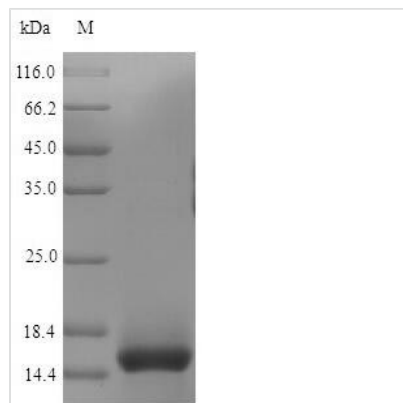
www.szabo-scandic.com

[linkedin.com/company/szaboscandic](https://www.linkedin.com/company/szaboscandic) 

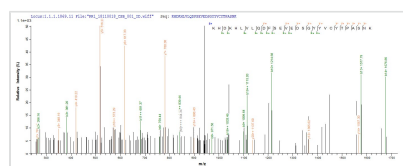


Recombinant Mouse T-cell surface glycoprotein CD3 epsilon chain(Cd3e),partial

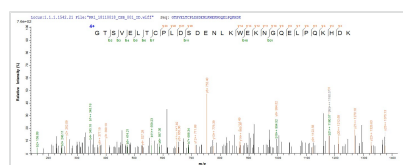
Product Code	CSB-YP004931MO
Relevance	The CD3 complex mediates signal transduction, resulting in T cell activation and proliferation. Required for normal immune responses.
Storage	The shelf life is related to many factors, storage state, buffer ingredients, storage temperature and the stability of the protein itself. Generally, the shelf life of liquid form is 6 months at -20°C/-80°C. The shelf life of lyophilized form is 12 months at -20°C/-80°C.
Uniprot No.	P22646
Storage Buffer	Tris-based buffer,50% glycerol
Product Type	Recombinant Proteins
Immunogen Species	Mus musculus (Mouse)
Purity	Greater than 90% as determined by SDS-PAGE.
Sequence	DAENIEYKVSISGTSVELTCPLDSDENLKWEKNGQELPQKHDKHLVLQDFSEV EDSGYYVCYTPASNKNTYLYLKARVCEYCVEVD
Lead Time	3-7 business days
Research Area	Immunology
Source	Yeast
Gene Names	Cd3e
Protein Names	Alternative name(s):T-cell surface antigen T3/Leu-4 epsilon chainCD_antigen: CD3e
Expression Region	23-108aa
Notes	Repeated freezing and thawing is not recommended. Store working aliquots at 4°C for up to one week.
Tag Info	N-terminal 6xHis-tagged
Mol. Weight	11.9 kDa
Protein Description	Extracellular Domain
Image	



(Tris-Glycine gel) Discontinuous SDS-PAGE (reduced) with 5% enrichment gel and 15% separation gel.



Based on the SEQUEST from database of Yeast host and target protein, the LC-MS/MS Analysis result of CSB-YP004931MO could indicate that this peptide derived from Yeast-expressed Mus musculus (Mouse) Cd3e.



Based on the SEQUEST from database of Yeast host and target protein, the LC-MS/MS Analysis result of CSB-YP004931MO could indicate that this peptide derived from Yeast-expressed Mus musculus (Mouse) Cd3e.

Description

Yeast-expressed T-cell surface glycoprotein CD3 epsilon chain (Cd3e) CSB-YP004931MO is a recombinant fusion protein of partial Cd3e coupled to a 6xHis-tag at the N-terminus. This protein consists of the extracellular domain (23-108aa) of mouse Cd3e and has a calculated molecular weight of 11.9 kDa. Its identity was validated by the LC-MS/MS analysis. The SDS-PAGE showed an observed Cd3e protein molecular mass of about 14.5-16 kDa. The purity of this protein is over 90%. In-stock Cd3e proteins are offered now. Except for specific antibody synthesis, this recombinant Cd3e protein also may be used in the Cd3e-related immunology studies.

Cd3e, together with CD3-gamma, -delta and -zeta, and the T-cell receptor alpha/beta and gamma/delta heterodimers, forms the T-cell receptor-CD3 complex. This complex has a vital role in coupling antigen recognition to several intracellular signal-transduction pathways. Cd3e is essential for T-cell development. Deficiencies of Cd3e lead to immunodeficiency. It is also related to the susceptibility of type I diabetes in women.