



SZABO SCANDIC

Part of Europa Biosite

Produktinformation



Forschungsprodukte & Biochemikalien



Zellkultur & Verbrauchsmaterial



Diagnostik & molekulare Diagnostik



Laborgeräte & Service

Weitere Information auf den folgenden Seiten!
See the following pages for more information!



Lieferung & Zahlungsart

siehe unsere [Liefer- und Versandbedingungen](#)

Zuschläge

- Mindermengenzuschlag
- Trockeneiszuschlag
- Gefahrgutzuschlag
- Expressversand

SZABO-SCANDIC Handels GmbH

Quellenstraße 110, A-1100 Wien

T. +43(0)1 489 3961-0

F. +43(0)1 489 3961-7

mail@szabo-scandic.com

www.szabo-scandic.com

[linkedin.com/company/szaboscandic](https://www.linkedin.com/company/szaboscandic) 



Recombinant Human Secretory phospholipase A2 receptor (PLA2R1), partial

Product Code	CSB-YP623780HU
Relevance	Receptor for secretory phospholipase A2 (sPLA2). Acts as a receptor for phospholipase sPLA2-IB/PLA2G1B but not sPLA2-IIA/PLA2G2A. Also able to bind to snake PA2-like toxins. Although its precise function remains unclear, binding of sPLA2 to its receptor participates in both positive and negative regulation of sPLA2 functions as well as clearance of sPLA2. Binding of sPLA2-IB/PLA2G1B induces various effects depending on the cell type, such as activation of the mitogen-activated protein kinase (MAPK) cascade to induce cell proliferation, the production of lipid mediators, selective release of arachidonic acid in bone marrow-derived mast cells. In neutrophils, binding of sPLA2-IB/PLA2G1B can activate p38 MAPK to stimulate elastase release and cell adhesion. May be involved in responses in proinflammatory cytokine productions during endotoxic shock. Also has endocytic properties and rapidly internalizes sPLA2 ligands, which is particularly important for the clearance of Extracellular domain sPLA2s to protect their potent enzymatic activities. The soluble secretory phospholipase A2 receptor form is circulating and acts as a negative regulator of sPLA2 functions by blocking the biological functions of sPLA2-IB/PLA2G1B.
Abbreviation	PLA2R1
Storage	The shelf life is related to many factors, storage state, buffer ingredients, storage temperature and the stability of the protein itself. Generally, the shelf life of liquid form is 6 months at -20°C/-80°C. The shelf life of lyophilized form is 12 months at -20°C/-80°C.
Uniprot No.	Q13018
Alias	180 kDa secretory phospholipase A2 receptor C-type lectin domain family 13 member CM-type receptor
Product Type	Recombinant Protein
Immunogen Species	Homo sapiens (Human)
Purity	Greater than 90% as determined by SDS-PAGE.
Sequence	EEKTWHEALRSCQADNSALIDITSLAEVEFLVTLLGDENASETWIGLSSNKIPVS FEWSNDSSVIFTNWHLEPHIFPNRSQLCVSAEQSEGHWKVKNCERLFYICK KAGHVLSDAESGCQEGWERHGGFCYKID
Research Area	Cardiovascular
Source	Yeast
Target Names	PLA2R1
Protein Names	Recommended name: Secretory phospholipase A2 receptor Short name= PLA2-R Short name= PLA2R Alternative name(s): 180 kDa secretory phospholipase A2 receptor C-type lectin domain family 13 member C M-type



receptor Cleaved into

Expression Region

395-530aa

Notes

Repeated freezing and thawing is not recommended. Store working aliquots at 4°C for up to one week.

Tag Info

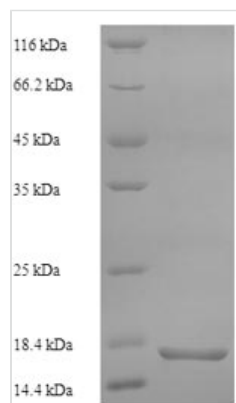
N-terminal 6xHis-tagged

Mol. Weight

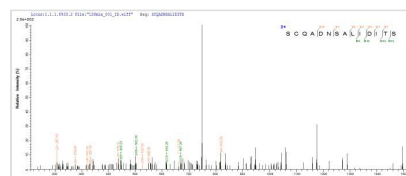
17.4kDa

Protein Length

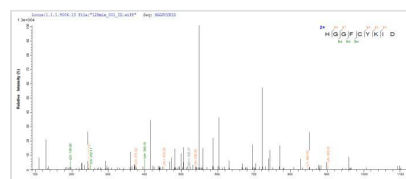
Partial

Image


(Tris-Glycine gel) Discontinuous SDS-PAGE (reduced) with 5% enrichment gel and 15% separation gel.



Based on the SEQUEST from database of Yeast host and target protein, the LC-MS/MS Analysis result of CSB-YP623780HU could indicate that this peptide derived from Yeast-expressed Homo sapiens (Human) PLA2R1.



Based on the SEQUEST from database of Yeast host and target protein, the LC-MS/MS Analysis result of CSB-YP623780HU could indicate that this peptide derived from Yeast-expressed Homo sapiens (Human) PLA2R1.

Description

Dive into cardiovascular research with our high-quality Recombinant Human PLA2R1 protein. The secretory phospholipase A2 receptor (PLA2R1) is a type I transmembrane glycoprotein, which plays a crucial role in modulating the actions of secretory phospholipase A2 (sPLA2) enzymes, involved in lipid metabolism and inflammatory responses. This makes PLA2R1 an important target in understanding the complex mechanisms underlying cardiovascular health and disease.

Our Recombinant Human PLA2R1 protein is expressed in yeast, ensuring optimal protein folding and glycosylation. The partial protein (395-530aa) retains its native structure and functionality, while the N-terminal 6xHis-tag allows for efficient purification and detection. With a purity greater than 90% as determined by SDS-PAGE, our Recombinant Human PLA2R1 protein delivers reliable results for your cardiovascular research projects. The protein is available in both



liquid and lyophilized powder forms, providing you with flexibility and convenience in your experiments.

Reconstitution

We recommend that this vial be briefly centrifuged prior to opening to bring the contents to the bottom. Please reconstitute protein in deionized sterile water to a concentration of 0.1-1.0 mg/mL. We recommend to add 5-50% of glycerol (final concentration) and aliquot for long-term storage at -20°C/-80°C. Our default final concentration of glycerol is 50%. Customers could use it as reference.

Shelf Life

The shelf life is related to many factors, storage state, buffer ingredients, storage temperature and the stability of the protein itself. Generally, the shelf life of liquid form is 6 months at -20°C/-80°C. The shelf life of lyophilized form is 12 months at -20°C/-80°C.