



SZABO SCANDIC

Part of Europa Biosite

Produktinformation



Forschungsprodukte & Biochemikalien



Zellkultur & Verbrauchsmaterial



Diagnostik & molekulare Diagnostik



Laborgeräte & Service

Weitere Information auf den folgenden Seiten!
See the following pages for more information!



Lieferung & Zahlungsart

siehe unsere [Liefer- und Versandbedingungen](#)

Zuschläge

- Mindermengenzuschlag
- Trockeneiszuschlag
- Gefahrgutzuschlag
- Expressversand

SZABO-SCANDIC Handels GmbH

Quellenstraße 110, A-1100 Wien

T. +43(0)1 489 3961-0

F. +43(0)1 489 3961-7

mail@szabo-scandic.com

www.szabo-scandic.com

[linkedin.com/company/szaboscandic](https://www.linkedin.com/company/szaboscandic)



PRODUCT INFORMATION

Common Name	ACD22-VCMAE, DCDT2980S, FCU2803, RG-7593, RO5541072-000, Unconjugated mAb
Synonyms	CD22;SIGLEC2;BL-CAM;SIGLEC-2;Siglec2;SIGLEC2FLJ22814
Conjugate	Unconjugated
Applications	ELISA; Flow Cyt
Recommended Dilutions	ELISA 1:5000-10000; Flow Cyt 1:100
Formulation & Reconstitution	Lyophilized from sterile PBS, pH 7.4. Normally 5 % – 8% trehalose is added as protectants before lyophilization. Please see Certificate of Analysis for specific instructions of reconstitution.
Host Species	Humanized
IgG type	IgG1
Reactivity	Human
Target	CD22
Uniprot ID	P20273
Description	Anti-CD22 (pinatuzumab biosimilar) mAb
Delivery	In Stock
Storage & Shipping	Store at -20°C to -80°C for 12 months in lyophilized form. After reconstitution, if not intended for use within a month, aliquot and store at -80°C (Avoid repeated freezing and thawing). Lyophilized proteins are shipped at ambient temperature.
Background	Research grade biosimilar. Not for use in therapeutic or diagnostic procedures for humans or animals. Our unconjugated biosimilar monoclonal antibodies (mAbs) are based on the sequences outlined in relevant patents or scientific publications. These antibodies are in their native, unconjugated form, meaning they do not contain any payload or therapeutic agent attached. They are designed for use in research and development, and their performance has been tested as standalone molecules through comprehensive QC tests.
Usage	Research use only
DIMA Disclaimer	All DIMA recombinant antibodies are genuinely generated by DIMA Biotech. They are all under patent application. Any protein sequencing or reverse engineering attempt is prohibited. We are actively scrutinizing all patent application to ensure no IP infringement.



Anti-CD22 (pinatuzumab vedotin biosimilar) mAb ELISA

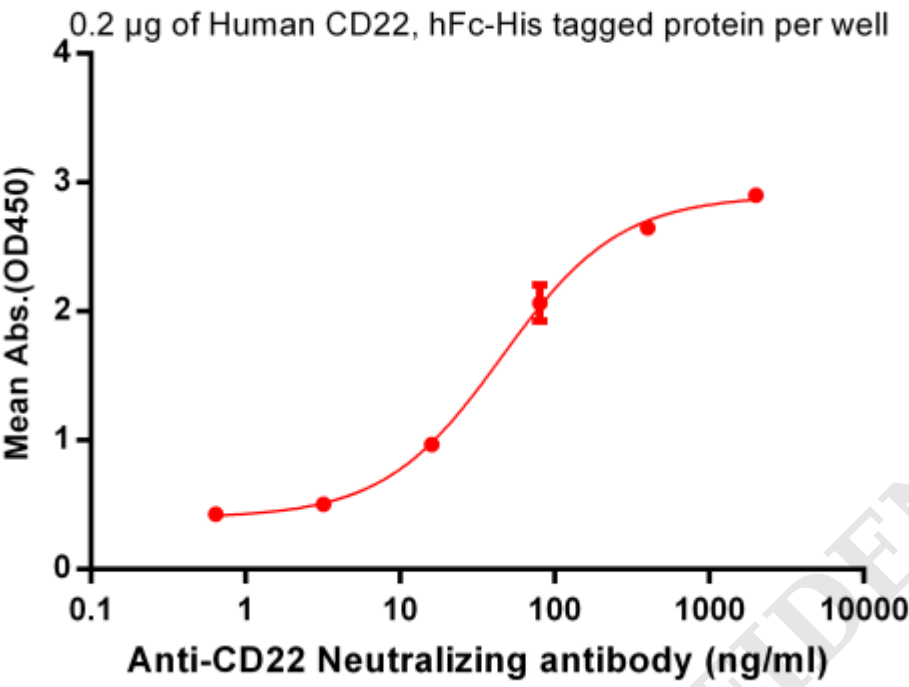


Figure 1. ELISA plate pre-coated by 2 µg/ml (100 µL/well) Human CD22, hFc-His tagged protein (PME100005) can bind Anti-CD22 Neutralizing antibody in a linear range of 3.2-400 ng/ml. In order to specifically detect BME100029, mouse anti-human Fab-specific antibody was used as detection antibody.

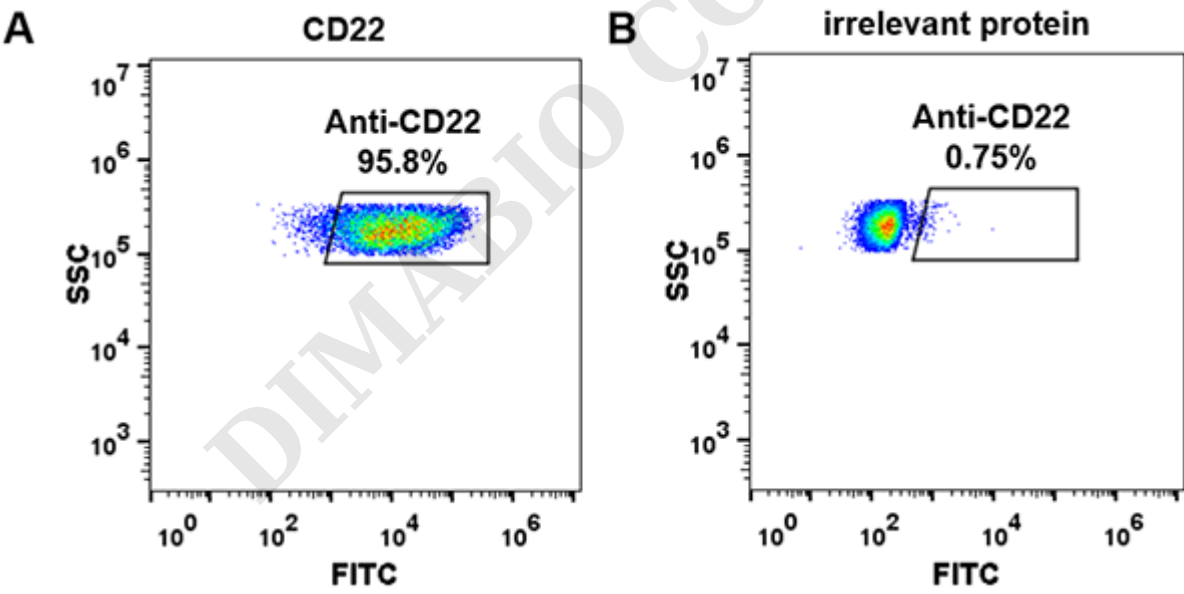


Figure 2. HEK293 cell line transfected with irrelevant protein (B) and human CD22 (A) were surface stained with Anti-CD22 mAb 1 µg/ml (pinatuzumab) followed by Alexa 488-conjugated anti-human IgG secondary antibody.

