



# SZABO SCANDIC

Part of Europa Biosite

## Produktinformation



Forschungsprodukte & Biochemikalien



Zellkultur & Verbrauchsmaterial



Diagnostik & molekulare Diagnostik



Laborgeräte & Service

Weitere Information auf den folgenden Seiten!  
See the following pages for more information!



### Lieferung & Zahlungsart

siehe unsere [Liefer- und Versandbedingungen](#)

### Zuschläge

- Mindermengenzuschlag
- Trockeneiszuschlag
- Gefahrgutzuschlag
- Expressversand

### SZABO-SCANDIC HandelsgmbH

Quellenstraße 110, A-1100 Wien

T. +43(0)1 489 3961-0

F. +43(0)1 489 3961-7

[mail@szabo-scandic.com](mailto:mail@szabo-scandic.com)

[www.szabo-scandic.com](http://www.szabo-scandic.com)

[linkedin.com/company/szaboscandic](https://www.linkedin.com/company/szaboscandic) 

**PRODUCT INFORMATION**

<b>Common Name</b>	LymphoStat-B, hBlySmAb-1.1
<b>Synonyms</b>	TNFSF13B;BAFF;BLYS;CD257;DTL;TALL1;THANK;TNFSF20;ZTNF4;TALL-1
<b>Conjugate</b>	Unconjugated
<b>Applications</b>	ELISA; Flow Cyt
<b>Recommended Dilutions</b>	ELISA 1:5000-10000; Flow Cyt 1:100
<b>Formulation &amp; Reconstitution</b>	Lyophilized from sterile PBS, pH 7.4. Normally 5 % - 8% trehalose is added as protectants before lyophilization. Please see Certificate of Analysis for specific instructions of reconstitution.
<b>Host Species</b>	Homo sapiens
<b>IgG type</b>	IgG1
<b>Reactivity</b>	Human
<b>Target</b>	BAFF
<b>Uniprot ID</b>	Q9Y275
<b>Description</b>	Anti-BAFF (belimumab biosimilar) mAb
<b>Delivery</b>	In Stock
<b>Storage &amp; Shipping</b>	Store at -20°C to -80°C for 12 months in lyophilized form. After reconstitution, if not intended for use within a month, aliquot and store at -80°C (Avoid repeated freezing and thawing). Lyophilized proteins are shipped at ambient temperature.
<b>Background</b>	Research grade biosimilar. Not for use in therapeutic or diagnostic procedures for humans or animals.
<b>Usage</b>	Research use only
<b>DIMA Disclaimer</b>	All DIMA recombinant antibodies are genuinely generated by DIMA Biotech. They are all under patent application. Any protein sequencing or reverse engineering attempt is prohibited. We are actively scrutinizing all patent application to ensure no IP infringement.



## Anti-BAFF (belimumab biosimilar) mAb ELISA

0.2  $\mu$ g of Human BAFF, hFc Tagged protein per well

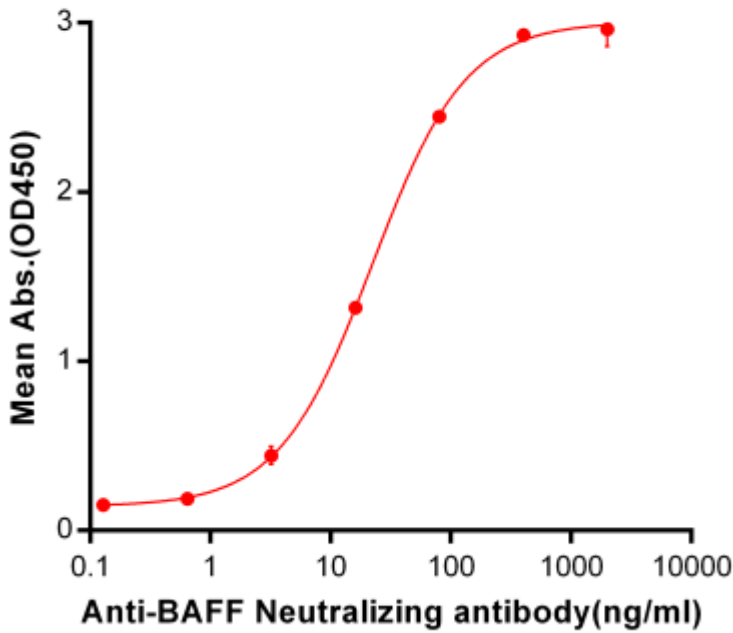


Figure 1. ELISA plate pre-coated by 2  $\mu$ g/ml (100  $\mu$ L/well) Human BAFF, hFc tagged protein (PME100043) can bind Anti-BAFF Neutralizing antibody (BME100044) in a linear range of 3.2-400 ng/ml. In order to specifically detect BME100044, mouse anti-human Fab-specific antibody was used as detection antibody.

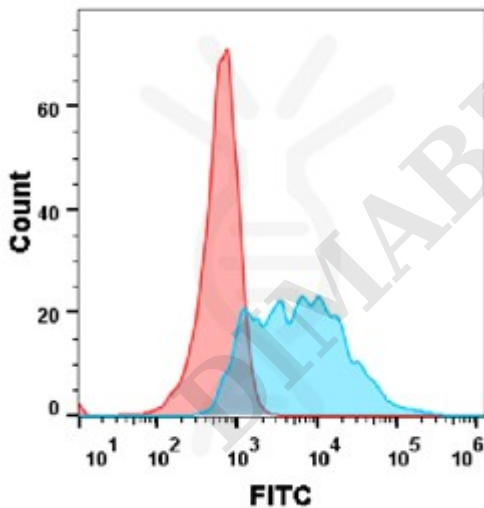


Figure 2. Flow cytometry analysis with Anti-BAFF mAb 1  $\mu$ g/ml (belimumab) on Expi293 cells transfected with human BAFF (Blue histogram) or Expi293 transfected with irrelevant protein (Red histogram).

