



SZABO SCANDIC

Part of Europa Biosite

Produktinformation



Forschungsprodukte & Biochemikalien



Zellkultur & Verbrauchsmaterial



Diagnostik & molekulare Diagnostik



Laborgeräte & Service

Weitere Information auf den folgenden Seiten!
See the following pages for more information!



Lieferung & Zahlungsart

siehe unsere [Liefer- und Versandbedingungen](#)

Zuschläge

- Mindermengenzuschlag
- Trockeneiszuschlag
- Gefahrgutzuschlag
- Expressversand

SZABO-SCANDIC Handels GmbH

Quellenstraße 110, A-1100 Wien

T. +43(0)1 489 3961-0

F. +43(0)1 489 3961-7

mail@szabo-scandic.com

www.szabo-scandic.com

[linkedin.com/company/szaboscandic](https://www.linkedin.com/company/szaboscandic) 

PRODUCT INFORMATION

Target	CD24
Synonyms	CD24a;HSA;Ly-52;nectadrin
Description	Recombinant mouse CD24 protein with C-terminal human Fc tag
Delivery	In Stock
Uniprot ID	P24807
Expression Host	HEK293
Tag	C-Human Fc Tag
Molecular Characterization	Mouse CD24(Asn27-Arg52) hFc(Glu99-Ala330)
Molecular Weight	The protein has a predicted molecular mass of 28.8 kDa after removal of the signal peptide. The apparent molecular mass of mCD24-hFc is approximately 35-55 kDa due to glycosylation.
Purity	The purity of the protein is greater than 95% as determined by SDS-PAGE and Coomassie blue staining.
Formulation & Reconstitution	Lyophilized from sterile PBS, pH 7.4. Normally 5 % - 8% trehalose is added as protectants before lyophilization. Please see Certificate of Analysis for specific instructions of reconstitution.
Storage & Shipping	Store at -20°C to -80°C for 12 months in lyophilized form. After reconstitution, if not intended for use within a month, aliquot and store at -80°C (Avoid repeated freezing and thawing). Lyophilized proteins are shipped at ambient temperature.
Background	Enables Hsp70 protein binding activity; Hsp90 protein binding activity; and carbohydrate binding activity. Involved in several processes, including chemokine receptor transport out of membrane raft; negative regulation of cytokine production; and regulation of inflammatory response to wounding. Acts upstream of or within several processes, including positive regulation of immune response; regulation of cell-cell adhesion; and regulation of lymphocyte activation. Located in cell projection membrane; external side of plasma membrane; and membrane raft. Is anchored component of external side of plasma membrane. Is expressed in several structures, including extraembryonic component; genitourinary system; hemolymphoid system; hindlimb; and retina. Human ortholog(s) of this gene implicated in multiple sclerosis. Orthologous to human CD24 (CD24 molecule). [provided by Alliance of Genome Resources, Apr 2022]
Usage	Research use only
Conjugate	Unconjugated



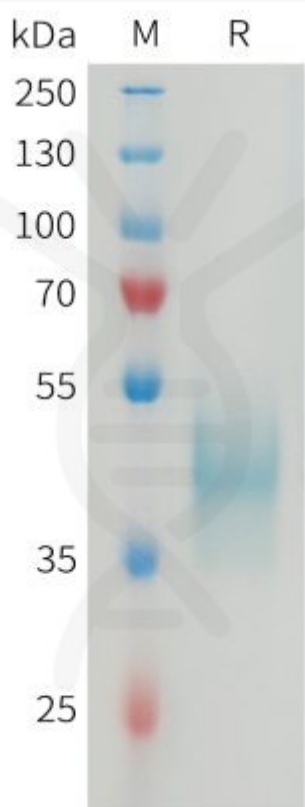


Figure 1. Mouse CD24 Protein, hFc Tag on SDS-PAGE under reducing condition.

