



SZABO SCANDIC

Part of Europa Biosite

Produktinformation



Forschungsprodukte & Biochemikalien



Zellkultur & Verbrauchsmaterial



Diagnostik & molekulare Diagnostik



Laborgeräte & Service

Weitere Information auf den folgenden Seiten!
See the following pages for more information!



Lieferung & Zahlungsart

siehe unsere [Liefer- und Versandbedingungen](#)

Zuschläge

- Mindermengenzuschlag
- Trockeneiszuschlag
- Gefahrgutzuschlag
- Expressversand

SZABO-SCANDIC Handels GmbH

Quellenstraße 110, A-1100 Wien

T. +43(0)1 489 3961-0

F. +43(0)1 489 3961-7

mail@szabo-scandic.com

www.szabo-scandic.com

[linkedin.com/company/szaboscandic](https://www.linkedin.com/company/szaboscandic) 

PRODUCT INFORMATION

Target	IGF-1R
Synonyms	hyft;CD221;IGF1R
Description	Recombinant mouse IGF-1R protein with C-terminal 6×His tag
Delivery	In Stock
Uniprot ID	Q60751
Expression Host	HEK293
Tag	C-6×His Tag
Molecular Characterization	Mouse IGF-1R(Glu31-His936) 6×His tag
Molecular Weight	The protein has a predicted molecular mass of 104.5 kDa after removal of the signal peptide.
Purity	The purity of the protein is greater than 85% as determined by SDS-PAGE and Coomassie blue staining.
Formulation & Reconstitution	Lyophilized from sterile PBS, pH 7.4. Normally 5 % - 8% trehalose is added as protectants before lyophilization. Please see Certificate of Analysis for specific instructions of reconstitution.
Storage & Shipping	Store at -20°C to -80°C for 12 months in lyophilized form. After reconstitution, if not intended for use within a month, aliquot and store at -80°C (Avoid repeated freezing and thawing). Lyophilized proteins are shipped at ambient temperature.
Background	Enables insulin-like growth factor binding activity. Involved in several processes, including adrenal gland development; positive regulation of cold-induced thermogenesis; and positive regulation of meiotic cell cycle. Acts upstream of or within several processes, including gland development; peptidyl-tyrosine autophosphorylation; and regulation of intracellular signal transduction. Located in T-tubule. Is integral component of membrane. Is expressed in several structures, including alimentary system; brain; genitourinary system; limb; and lung. Human ortholog(s) of this gene implicated in several diseases, including dementia (multiple); kidney cancer (multiple); liver disease (multiple); nervous system cancer (multiple); and neurodegenerative disease (multiple). Orthologous to human IGF1R (insulin like growth factor 1 receptor). [provided by Alliance of Genome Resources, Apr 2022]
Usage	Research use only
Conjugate	Unconjugated



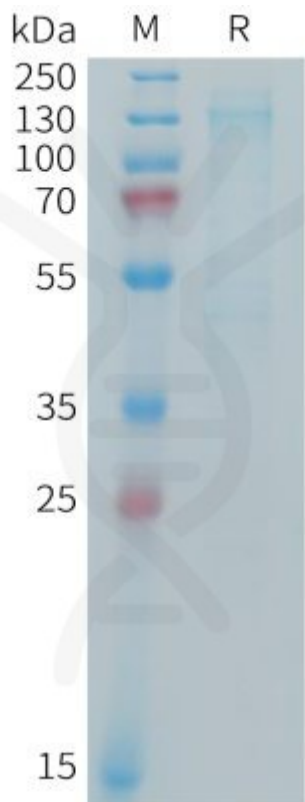


Figure 1. Mouse IGF-1R Protein, His Tag on SDS-PAGE under reducing condition.

