



SZABO SCANDIC

Part of Europa Biosite

Produktinformation



Forschungsprodukte & Biochemikalien



Zellkultur & Verbrauchsmaterial



Diagnostik & molekulare Diagnostik



Laborgeräte & Service

Weitere Information auf den folgenden Seiten!
See the following pages for more information!



Lieferung & Zahlungsart

siehe unsere [Liefer- und Versandbedingungen](#)

Zuschläge

- Mindermengenzuschlag
- Trockeneiszuschlag
- Gefahrgutzuschlag
- Expressversand

SZABO-SCANDIC HandelsgmbH

Quellenstraße 110, A-1100 Wien

T. +43(0)1 489 3961-0

F. +43(0)1 489 3961-7

mail@szabo-scandic.com

www.szabo-scandic.com

[linkedin.com/company/szaboscandic](https://www.linkedin.com/company/szaboscandic)



PRODUCT INFORMATION

Target	IL1RL2
Synonyms	IL-1Rrp2;IL-36R;IL1R-rp2;IL1RRP2
Description	Recombinant Human IL1RL2 Protein with C-terminal 6×His tag
Delivery	In Stock
Uniprot ID	Q9HB29
Expression Host	HEK293
Tag	C-6×His Tag
Molecular Characterization	IL1RL2(Asp20-Arg335) 6×His tag
Molecular Weight	The protein has a predicted molecular mass of 36.8 kDa after removal of the signal peptide.
Purity	The purity of the protein is greater than 85% as determined by SDS-PAGE and Coomassie blue staining.
Formulation & Reconstitution	Lyophilized from sterile PBS, pH 7.4. Normally 5 % - 8% trehalose is added as protectants before lyophilization. Please see Certificate of Analysis for specific instructions of reconstitution.
Storage & Shipping	Store at -20°C to -80°C for 12 months in lyophilized form. After reconstitution, if not intended for use within a month, aliquot and store at -80°C (Avoid repeated freezing and thawing). Lyophilized proteins are shipped at ambient temperature.
Background	The protein encoded by this gene is a member of the interleukin 1 receptor family. An experiment with transient gene expression demonstrated that this receptor was incapable of binding to interleukin 1 alpha and interleukin 1 beta with high affinity. This gene and four other interleukin 1 receptor family genes, including interleukin 1 receptor, type I (IL1R1), interleukin 1 receptor, type II (IL1R2), interleukin 1 receptor-like 1 (IL1RL1), and interleukin 18 receptor 1 (IL18R1), form a cytokine receptor gene cluster in a region mapped to chromosome 2q12. [provided by RefSeq, Jul 2008]
Usage	Research use only
Conjugate	Unconjugated



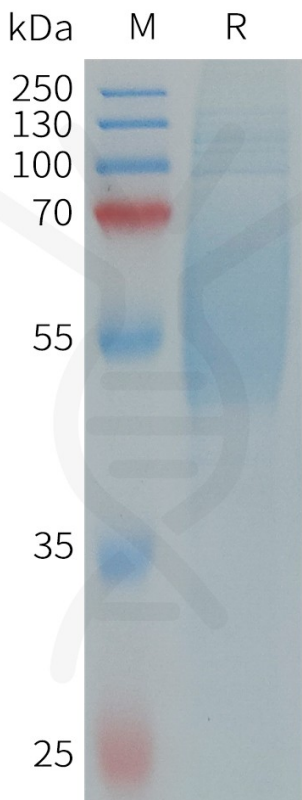


Figure 1. Human IL1RL2 Protein, His Tag on SDS-PAGE under reducing condition.

Human IL1RL2, His Tagged protein ELISA

0.2 µg of Human IL1RL2, His tagged protein per well

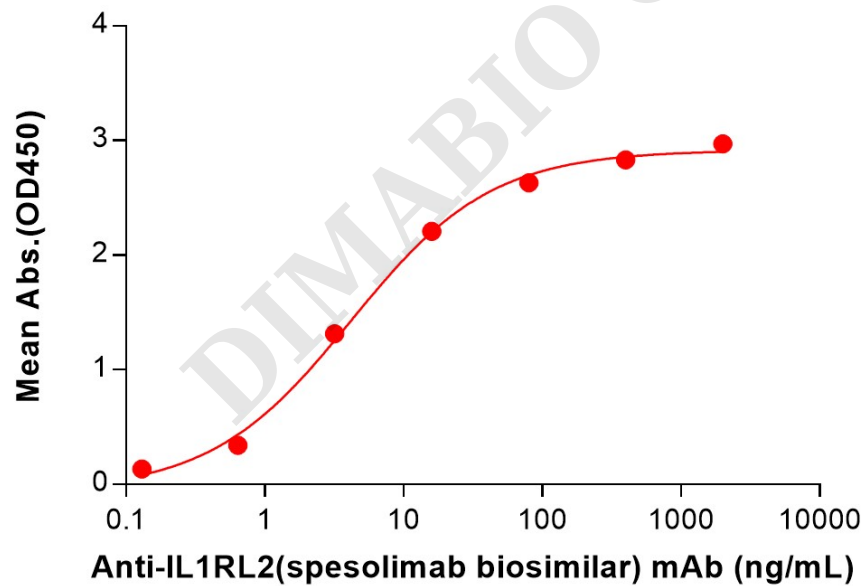


Figure 2. ELISA plate pre-coated by 2 µg/mL (100 µL/well) Human IL1RL2 Protein, His Tag (PME101318) can bind Anti-IL1RL2 (spesolimab biosimilar) mAb (BME100235) in a linear range of 0.64–80 ng/mL.



Human IL1RL2, His Tagged protein ELISA

0.2 µg of Human IL1RL2, His tagged protein per well

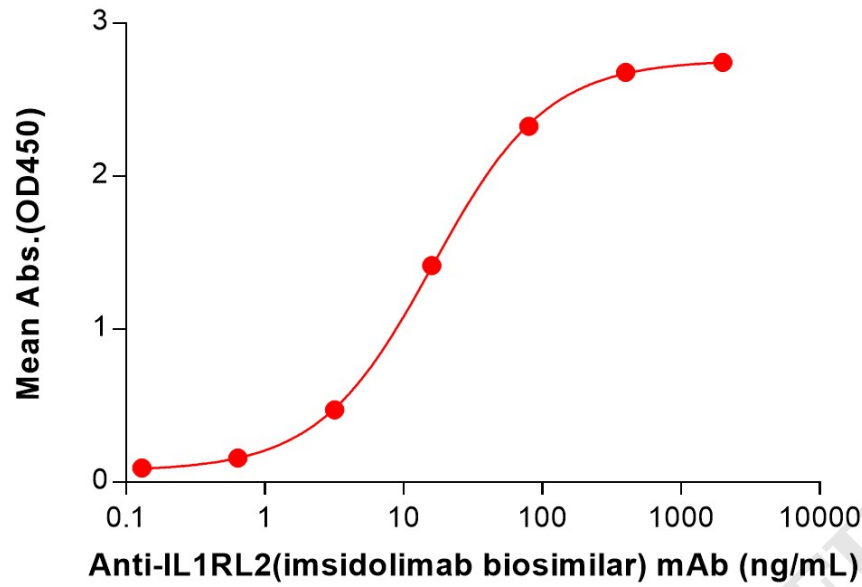


Figure 3. ELISA plate pre-coated by 2 µg/mL (100 µL/well) Human IL1RL2 Protein, His Tag (PME101318) can bind Anti-IL1RL2(imsidolimab biosimilar) mAb (BME100251) in a linear range of 3.20-400 ng/mL.

