



# SZABO SCANDIC

Part of Europa Biosite

## Produktinformation



Forschungsprodukte & Biochemikalien



Zellkultur & Verbrauchsmaterial



Diagnostik & molekulare Diagnostik



Laborgeräte & Service

Weitere Information auf den folgenden Seiten!  
See the following pages for more information!



### Lieferung & Zahlungsart

siehe unsere [Liefer- und Versandbedingungen](#)

### Zuschläge

- Mindermengenzuschlag
- Trockeneiszuschlag
- Gefahrgutzuschlag
- Expressversand

### SZABO-SCANDIC HandelsgmbH

Quellenstraße 110, A-1100 Wien

T. +43(0)1 489 3961-0

F. +43(0)1 489 3961-7

[mail@szabo-scandic.com](mailto:mail@szabo-scandic.com)

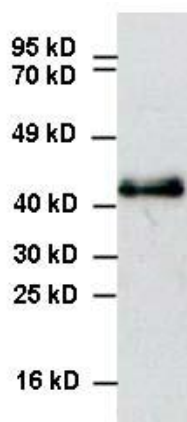
[www.szabo-scandic.com](http://www.szabo-scandic.com)

[linkedin.com/company/szaboscandic](https://www.linkedin.com/company/szaboscandic) 

## Anti-V5 Rabbit Polyclonal Antibody

Catalog Number: CB-V95r, 100 µg

<b>Introduction</b>	Epitope tags are short peptide sequences which are chosen because high-affinity antibodies can be reliably produced in many different species. These are usually derived from viral genes, which explain their high immunoreactivity. Epitope tags include V5-tag, c-myc-tag, and HA-tag. These tags are particularly useful for western blotting and immunoprecipitation experiments, although they also find use in antibody purification.
<b>Description</b>	Rabbit anti-V5 tag polyclonal antibody.
<b>Applications</b>	Western blot, ELISA, IHC, and IP, may be used for other applications.
<b>Immunogen</b>	Synthesized peptide (GKPIPPLLGLDST) from the C-terminal sequence of the P and V proteins of Simian Virus 5.
<b>Specificity</b>	Recognizes recombinant proteins with V5 peptide sequence at either N or C-terminus.
<b>Purification</b>	Protein G/A immunoaffinity chromatography.
<b>Isotype</b>	Rabbit IgG.
<b>Storage</b>	Store at 4 °C; Stable for at least 6 months from the date of shipment. Non-hazardous. For long-term storage, keep at -20 °C.
<b>Concentration</b>	1 µg/µl.



**WB**, recombinant protein with V5-tag in transfected HEK293 whole cell lysate.