



SZABO SCANDIC

Part of Europa Biosite

Produktinformation



Forschungsprodukte & Biochemikalien



Zellkultur & Verbrauchsmaterial



Diagnostik & molekulare Diagnostik



Laborgeräte & Service

Weitere Information auf den folgenden Seiten!
See the following pages for more information!



Lieferung & Zahlungsart

siehe unsere [Liefer- und Versandbedingungen](#)

Zuschläge

- Mindermengenzuschlag
- Trockeneiszuschlag
- Gefahrgutzuschlag
- Expressversand

SZABO-SCANDIC HandelsgmbH

Quellenstraße 110, A-1100 Wien

T. +43(0)1 489 3961-0

F. +43(0)1 489 3961-7

mail@szabo-scandic.com

www.szabo-scandic.com

[linkedin.com/company/szaboscandic](https://www.linkedin.com/company/szaboscandic) 

Adenylate Cyclase Activating Polypeptide 1 Receptor (PAC1R) ACTOne™ Stable Cell Line

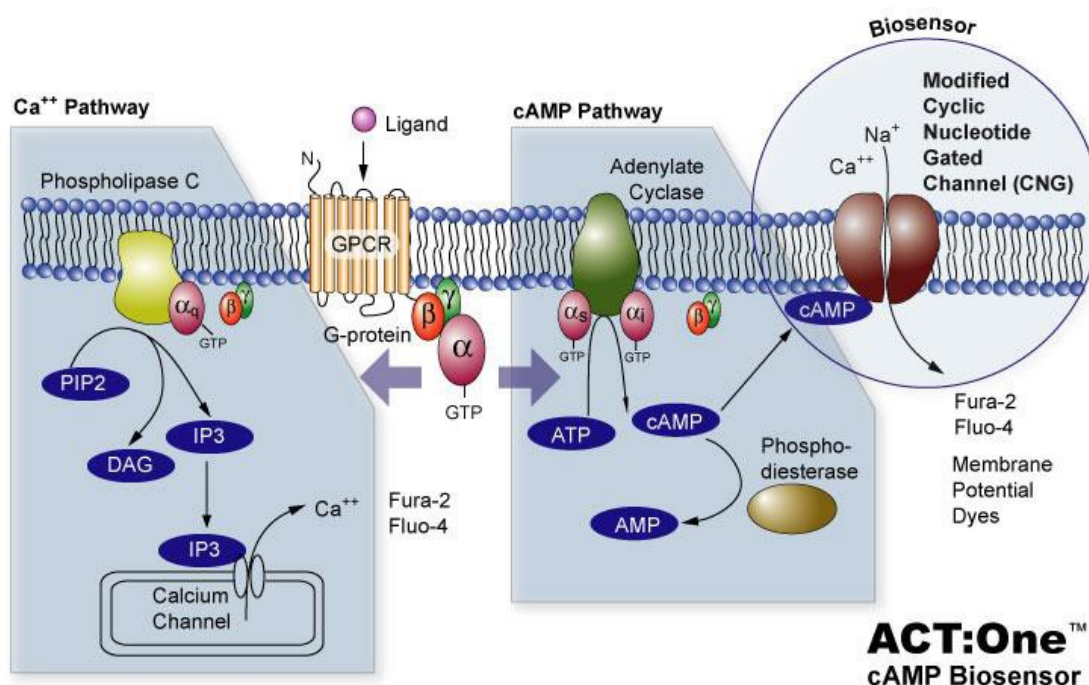
CATALOG NUMBER: CL-01-PAC1R

Introduction

PAC1R is a membrane-associated protein and shares significant homology with members of the glucagon/secretin receptor family. This receptor mediates diverse biological actions of adenylate cyclase activating polypeptide 1 and is positively coupled to adenylate cyclase.

Description

Human PAC1R ACTOne™ is a HEK-293 CNG cell line that expresses recombinant human PAC1R. HEK-293 CNG cells express a modified CNG (Cyclic Nucleotide Gated) channel that opens in response to elevated intracellular cAMP levels and consequently result in ion flux (often detectable by calcium-responsive dye, Cat# CA-C155) and cell membrane depolarization which can be easily measured with fluorescent Membrane Potential Dye (Cat# CA-M165). The assay allows both end-point and kinetic measurement of intracellular cAMP changes with a FDSS, FLIPR, or a fluorescence microplate reader.



Parental Cells

HEK-293 CNG cells (originally developed by BD Biosciences by introducing CNG in HEK-293 cells) (Cat# CL-03-PC20)

Gene/Enzyme Introduced

PAC1R (Genbank Accession No. P41586)



Please consider the environment before printing

Applications

- cAMP dependent human PAC1R receptor cell based assay
- cell based high-throughput screening of human PAC1R receptor agonists/antagonists

Functional Test

- this cell line has been tested positive for PAC1R receptor specific response
- surviving rate: More than 2.5 million/vial on the second day after thawing
- the receptor specific activity is stable for 10 weeks continuous passage

Mycoplasma Contamination Test

This lot of cells has been tested and found to be free of mycoplasma contamination.

Content

- Stable PAC1R receptor cells: 1 mL (1×10^6 cells/mL in 70% DMEM, 20% FBS, 10% DMSO)

Growth Properties

Adherent

Cell Culture Medium

- Growth medium: DMEM-10% FBS supplemented with 250 μ g/ml G418, 1 μ g/ml Puromycin for the PAC1R cells
- Freezing medium: 10% DMSO, 90% complete cell culture medium

Subculturing Procedure

1. Thaw the frozen cryovial of cells within 1-2 min by gentle agitation in a 37°C water bath. Decontaminate the cryovial by wiping the surface of the vial with 70% ethanol and transfer into a 25 cm² flask with 10 ml of pre-warmed complete DMEM growth medium.
2. Remove and discard culture medium next day, and then add fresh DMEM complete medium.
3. Monitor cell density daily. Cells should be passaged (1:3) when the culture reaches 80% confluence. Expected cell yield is between 1.5×10^5 and 2×10^5 viable cells/cm².
4. Add 1.0 mL of 0.25% (w/v) trypsin-0.53 mM EDTA solution to the flask and observe cells under an inverted microscope until the cell layer is dispersed (usually within 5 to 10 minutes).
Note: To avoid clumping do not agitate the cells by hitting or shaking the flask while waiting for the cells to detach. Place at 37°C to facilitate dispersal.
5. Transfer cell suspension to a 15mL centrifuge tube and spin at approximately 250 x g for 5 to 10 minutes.
6. Discard supernatant and resuspend cells in fresh growth medium. Add appropriate aliquots of the cell suspension to new culture vessels. An inoculum of 4 to 6×10^4 viable cells/cm² is recommended.
7. Incubate cultures at 37°C (5% CO₂).

Storage

Remove the frozen cells from the dry ice packaging and immediately place the cells at a temperature below -130°C, preferably in liquid nitrogen vapor, until ready for use.



Data Example

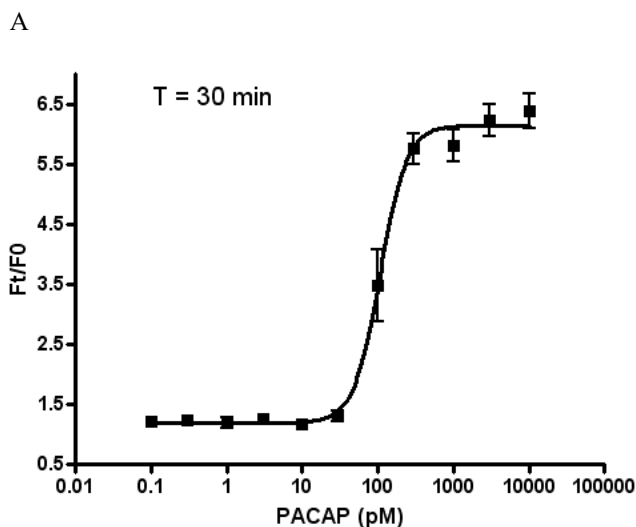


Figure 1. Response of ACTOne™ PAC1R cell line to PACAP

ACTOne™ PAC1R cells and parental cells (Cat# CL-03-PC20) were plated overnight in 20 μ l culture medium on a 384 well Biocoat plate. The next day, cells were dye-loaded with 20 μ l/well of 1x Dye-loading solution (membrane potential dye kit, Cat# CA-M165). After 2 hours of incubation at room temperature, two readings were obtained prior to and 30 min after the addition of PACAP. Ratios of the two readings (F/F0) are plotted in the figure.

- A. Dose response curve of PACAP in ACTOne™ PAC1R cell line. EC50 = 107.5 pM.
- B. Parental cells do not respond to PACAP (data not shown).

Notice to Purchaser

1. This cell line is to be used for research purposes only. It may not be transferred to third parties, resold, modified for resale, or used to manufacture commercial products or to provide a service to third parties without written approval of eEnzyme LLC.
2. Refer to the license agreement for details on the usage restrictions.

