



# SZABO SCANDIC

Part of Europa Biosite

## Produktinformation



Forschungsprodukte & Biochemikalien



Zellkultur & Verbrauchsmaterial



Diagnostik & molekulare Diagnostik



Laborgeräte & Service

Weitere Information auf den folgenden Seiten!  
See the following pages for more information!



### Lieferung & Zahlungsart

siehe unsere [Liefer- und Versandbedingungen](#)

### Zuschläge

- Mindermengenzuschlag
- Trockeneiszuschlag
- Gefahrgutzuschlag
- Expressversand

### SZABO-SCANDIC Handels GmbH

Quellenstraße 110, A-1100 Wien

T. +43(0)1 489 3961-0

F. +43(0)1 489 3961-7

[mail@szabo-scandic.com](mailto:mail@szabo-scandic.com)

[www.szabo-scandic.com](http://www.szabo-scandic.com)

[linkedin.com/company/szaboscandic](https://www.linkedin.com/company/szaboscandic) 

## Sphingosine-1-Phosphate Receptor 2 (S1PR2) ACTOne™ Stable Cell Line

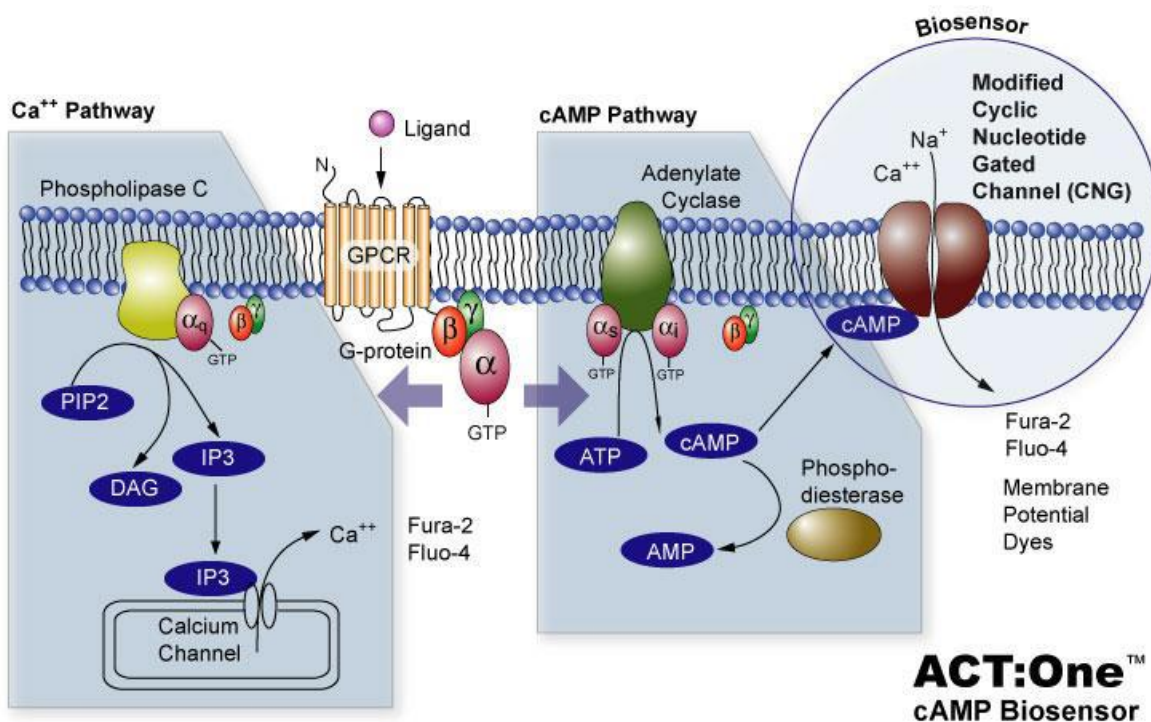
CATALOG NUMBER: CL-01-S1PR2

### Introduction

S1PR2 is a G-protein-coupled receptor which binds the bioactive signaling molecule sphingosine 1-phosphate (S1P). S1PR2 belongs to a sphingosine-1-phosphate receptor subfamily comprising five members (S1PR2-5). They are expressed in a wide variety of tissues, with each subtype exhibiting a different cell specificity, although they are found at their highest density on leukocytes. S1PR2 protein participates in sphingosine 1-phosphate-induced cell proliferation, survival, and transcriptional activation.

### Description

Human S1PR2 ACTOne™ is a HEK-293 CNG cell line that expresses recombinant human S1PR2. HEK-293 CNG cells express a modified CNG (Cyclic Nucleotide Gated) channel that opens in response to elevated intracellular cAMP levels and consequently result in ion flux (often detectable by calcium-responsive dye, Cat# CA-C155) and cell membrane depolarization which can be easily measured with fluorescent Membrane Potential Dye (Cat# CA-M165). The assay allows both end-point and kinetic measurement of intracellular cAMP changes with a FDSS, FLIPR, or a fluorescence microplate reader.



### Parental Cells

HEK-293 CNG cells (originally developed by BD Biosciences by introducing CNG in HEK-293 cells) (Cat# CL-03-PC20)

### Gene/Enzyme Introduced

S1PR2 (Genbank Accession No. NP\_004221.3)

### Applications

- cAMP dependent human S1PR2 receptor cell based assay



Please consider the environment before printing

- cell based high-throughput screening of human S1PR2 receptor agonists/antagonists

## Functional Test

- this cell line has been tested positive for S1PR2 receptor specific response
- surviving rate: More than 2.5 million/vial on the second day after thawing
- the receptor specific activity is stable for 10 weeks continuous passage

## Mycoplasma Contamination Test

This lot of cells has been tested and found to be free of mycoplasma contamination.

## Content

- Stable S1PR2 receptor cells: 1 mL ( $1 \times 10^6$  cells/mL in 70% DMEM, 20% FBS, 10% DMSO)

## Growth Properties

Adherent

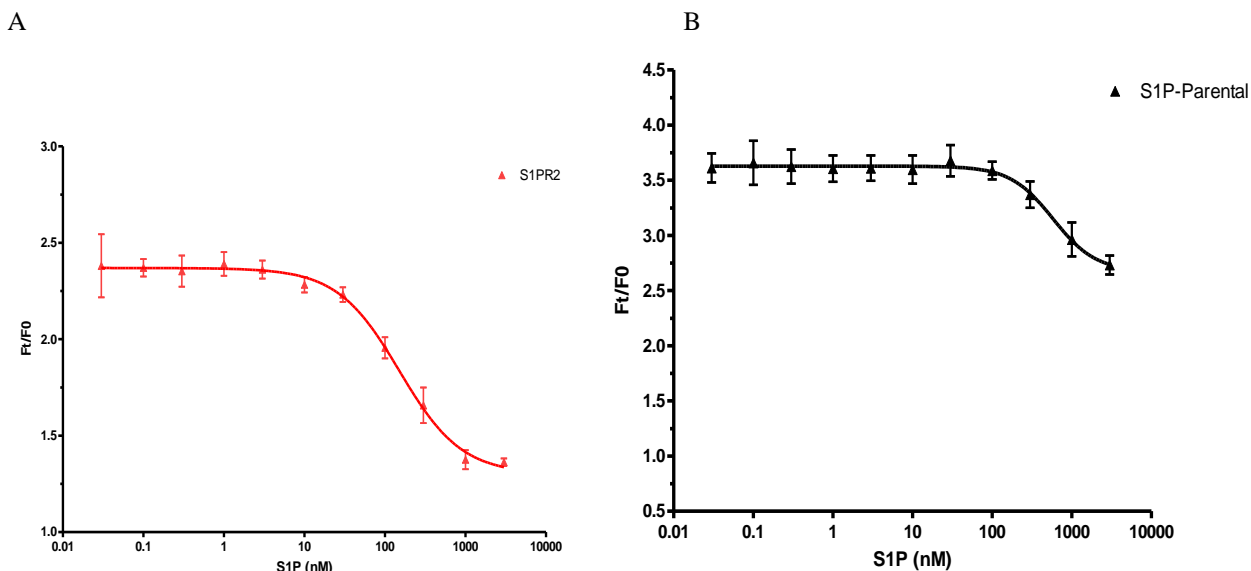
## Cell Culture Medium

- Growth medium: DMEM-10% FBS supplemented with 250  $\mu$ g/mL G418, 1  $\mu$ g/mL Puromycin
- Freezing medium: 10% DMSO, 90% complete cell culture medium

## Storage

Remove the frozen cells from the dry ice packaging and immediately place the cells at a temperature below  $-130^{\circ}\text{C}$ , preferably in liquid nitrogen vapor, until ready for use.

## Data Example



**Figure 1. Response of ACTOne™ S1PR2 cell line & parental cell line to S1P**

ACTOne™ S1PR2 cells and parental cells (Cat# CL-03-PC20) were plated overnight in 20  $\mu$ l culture medium on a 384 well Biocoat plate. The next day, cells were dye-loaded with 20  $\mu$ l/well of 1x Dye-loading solution (membrane potential dye kit, Cat# CA-M165). After 2 hours of incubation at room temperature, two readings were obtained prior to and 30 min after the addition of S1P. Ratios of the two readings (F/F0) are plotted in the figure.

- Dose response curve of S1P in ACTOne™ S1PR2 cell line. EC50 = 152 nM in the presence of PDE inhibitor Ro 20-1724 and  $\beta$ -adrenoceptor agonist isoproterenol.
- Parental cells do not respond to S1P.



**Notice to Purchaser**

This cell line is sold with a use license. It may not be transferred to third parties, resold, modified for resale without written approval of eEnzyme LLC. Refer to the license agreements for details on the usage restrictions.

