



SZABO SCANDIC

Part of Europa Biosite

Produktinformation



Forschungsprodukte & Biochemikalien



Zellkultur & Verbrauchsmaterial



Diagnostik & molekulare Diagnostik



Laborgeräte & Service

Weitere Information auf den folgenden Seiten!
See the following pages for more information!



Lieferung & Zahlungsart

siehe unsere [Liefer- und Versandbedingungen](#)

Zuschläge

- Mindermengenzuschlag
- Trockeneiszuschlag
- Gefahrgutzuschlag
- Expressversand

SZABO-SCANDIC HandelsgmbH

Quellenstraße 110, A-1100 Wien

T. +43(0)1 489 3961-0

F. +43(0)1 489 3961-7

mail@szabo-scandic.com

www.szabo-scandic.com

[linkedin.com/company/szaboscandic](https://www.linkedin.com/company/szaboscandic) 

Human Purinergic Receptor P2Y12 (P2RY12) Stable Cell Line

CATALOG NUMBER: CL-03-P2RY12

Introduction

This receptor functions as a receptor for extracellular ATP and ADP. In platelets binding to ADP leads to mobilization of intracellular calcium ions via activation of phospholipase C, a change in platelet shape, and probably to platelet aggregation.

Description

Human Purinergic Receptor P2Y12 (P2RY12) is a HEK293 cell line that expresses recombinant human P2RY12 receptor.

Parental Cells

HEK293-CNG cells (originally developed by BD Biosciences by introducing CNG in HEK-293 cells) (Cat# CL-03-PC20)

Gene/Enzyme Introduced

P2RY12 (Genbank Locus ID 64805; NCBI protein database NP_073625.1)

Applications

cAMP assay for Gi-coupled human purinergic receptor P2Y12 (P2RY12)

Functional Tests

- this cell line has been tested positive for P2RY12 receptor specific response
- surviving rate: more than 2.5 million/vial on the second day after thawing
- the receptor specific activity is stable for 10 weeks continuous passage

Mycoplasma Contamination Test

This lot of cells have been tested and found to be free of mycoplasma contamination.

Content

- Stable P2RY12 receptor cells: 1 mL (1 x 10⁶ cells/mL)

Growth Properties

Adherent

Cell Culture Medium

- Growth medium: 90%DMEM, 10% FBS, 250 µg/ml G418 and 1 µg/ml puromycin
- Freezing medium: 10% DMSO, 90% growth medium

Storage

Remove the frozen cells from the dry ice packaging and immediately place the cells at a temperature below -130°C, preferably in liquid nitrogen vapor, until ready for use.



DATA EXAMPLE

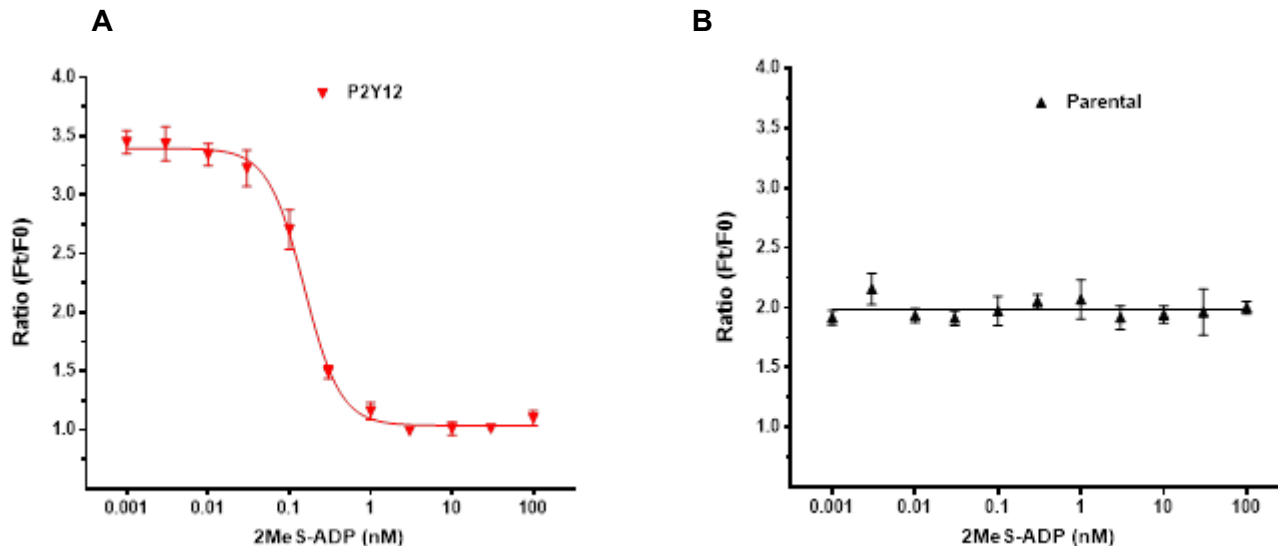


Figure 1. Response of ACTOne P2RY12 cell line & parental cell line to 2MeS-ADP

ACTOne P2RY12 cells and parental cells (CB-80200-200) were plated overnight in 20 μ l culture medium on a 384-well black/clear plate. The next day, cells were dye-loaded with 20 μ l/well of 1X Dye-loading solution (ACTOne Membrane Potential Assay Kit). After 2 hours of incubation at room temperature, two readings were obtained prior to and 15 min after the addition of 2MeS-ADP. Ratios of the two readings (F/F₀) are plotted in the figure.

- A. Dose response curve of 2MeS-ADP in ACTOne P2RY12 cell line. EC₅₀ = 0.15 nM in the presence of PDE inhibitor Ro20-1724 and β -adrenoceptor agonist isoproterenol.**
- B. The parental cells do not respond to 2MeS-ADP.**

Limited Label License Outlines

This cell line is to be used for research purposes only. It may not be transferred to third parties, resold, modified for resale, or used to manufacture commercial products or to provide a service to third parties without written approval of eEnzyme LLC.

The purchase of this product conveys to the buyer the non-transferable right to use the purchased amount of the product and components of the product for research use only by the buyer, where such research does not involve testing, analysis or screening services for any third party in return for compensation on a per test basis. The buyer cannot sell or otherwise transfer (a) this product (b) its components or (c) materials made using this product or its components to a third party or otherwise use this product or its components or materials made using this product or its components for Commercial Purposes. Commercial Purposes means any activity by a party for consideration and may include, but is not limited to: (1) use of the product or its components in manufacturing; (2) use of the product or its components to provide a service, information, or data to third parties; (3) use of the product or its components for therapeutic, diagnostic or prophylactic purposes; or (4) resale of the product or its components, whether or not such product or its components are resold for use in research.

Please refer to the Limited Label License provided with the shipment of the cells.

For more information, contact eEnzyme LLC, USA, Tel: (240)-683-5851, FAX: (240)-683-5852, Email: info@eenzyme.com.