



SZABO SCANDIC

Part of Europa Biosite

Produktinformation



Forschungsprodukte & Biochemikalien



Zellkultur & Verbrauchsmaterial



Diagnostik & molekulare Diagnostik



Laborgeräte & Service

Weitere Information auf den folgenden Seiten!
See the following pages for more information!



Lieferung & Zahlungsart

siehe unsere [Liefer- und Versandbedingungen](#)

Zuschläge

- Mindermengenzuschlag
- Trockeneiszuschlag
- Gefahrgutzuschlag
- Expressversand

SZABO-SCANDIC HandelsgmbH

Quellenstraße 110, A-1100 Wien

T. +43(0)1 489 3961-0

F. +43(0)1 489 3961-7

mail@szabo-scandic.com

www.szabo-scandic.com

[linkedin.com/company/szaboscandic](https://www.linkedin.com/company/szaboscandic) 

EBV (HHV-4) gH/gL protein complex

CATALOG NUMBER: HHV4-gHL-22P

Introduction

Herpesviruses have an envelope and an outer lipid bilayer which contains twelve surface glycoproteins. For infectivity to be attained, the double stranded DNA genome of EBV must enter the host cell through means of fusion of its envelope with the cellular membrane or via endocytosis.

Epstein-Barr virus (EBV) can infect both B cells and epithelial cells. The mechanisms for entering these two cells are different. The viral three-part glycoprotein complexes of gH/gL/gp42 mediate B cell membrane fusion.

Description

Recombinant EBV glycoprotein H and L expressed and purified from 293 cells

Viral Protein

Recombinant EBV gH protein (amino acid 19-678) (GenBank accession#:P03231) and EBV gL (aa 23-137) (GenBank accession#: CAD53428) complex

Applications

Western blot standard, antibody ELISA, immunogen, etc.

Storage

Store at -20 °C; Stable for two weeks from the date of shipment when kept at 4 °C. Non-hazardous. No MSDS required.

Concentration

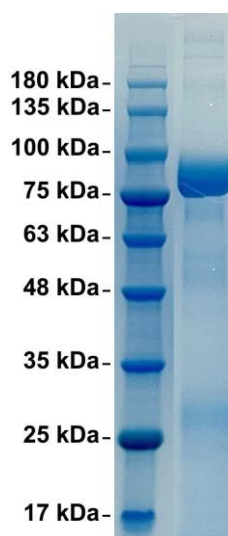
50 µg (1 µg/µl) in PBS

Endotoxin Level

<0.01 EU per 1 µg of the protein by LAL test

Purity

> 95% pure by 10% SDS-PAGE gel



4-20% SDS-PAGE: purified gH/gL(EBV) protein complex

EBV glycoprotein H and glycoprotein L SEQ:

SLSEVKLHLDIEGHASHYTIPTWTELMAKVPGLSPEALWREANVTEDLASMLNRYKLIYKTSGLGIALAEPVDIPAVSEGSMQVDASKVHPGV
ISGLNSPACMLSAPLEKQLFYIIGTMLPNTRPHSYVIFYQLRCHLSYVALSINGDKFYTGAMTSKFLMGTYKRVTEKGDHVLVSLVFGKTKDL
PDLRGPFSYPSLTSAQSGDYSLVIVTTFVHYANFHNYFVFNLDKMFRAVTMTAASYARYVLQKLVLLEMKGGCREPELDTETLTMFEVSV
FFKVGHAVGETGNGCVDLRWLAKSFFELTVLKDIIGICYGATVKGMQSYGLERLAAMLMTVKMEELGHLTTEKQEYALRLATVGYPKAGVYS
GLIGGATSVLLSAYNRHPLFQPLHTVMRETLFIGSHVVLRELRLNVTQGNLALYQLLSTALCSALEIGEVLRLGALGTESGLFSPCYLSLR
FDLTRDKLLSMAPQEATLDQAAVSNVAVDGFGLRSLEREDRDAWHLPAYKCVDRDKVLMIIPLINVTFIISSDREVRGSALYEASTTYLSS
LFLSPVIMNKCSQGAVAGEPRQIPKIQNFRTRTQKSCIFCGFALLSYDEKEGLETTTYITSQEVQNSILSSNYFDFDNLHVHYLLLTNGTVME
IAGLYEERA

NWAYPCCHVTQLRAQHLLALENISDIYLVSNQTCDFSLASLNSPKNGSNQLVIRSANGLNVVSSFFISILKRSSSALTGHRL
ELLTTLETLYGSFVSVEDLFGANLNRYAWHRGG