



# SZABO SCANDIC

Part of Europa Biosite

## Produktinformation



Forschungsprodukte & Biochemikalien



Zellkultur & Verbrauchsmaterial



Diagnostik & molekulare Diagnostik



Laborgeräte & Service

Weitere Information auf den folgenden Seiten!  
See the following pages for more information!



### Lieferung & Zahlungsart

siehe unsere [Liefer- und Versandbedingungen](#)

### Zuschläge

- Mindermengenzuschlag
- Trockeneiszuschlag
- Gefahrgutzuschlag
- Expressversand

### SZABO-SCANDIC HandelsgmbH

Quellenstraße 110, A-1100 Wien

T. +43(0)1 489 3961-0

F. +43(0)1 489 3961-7

[mail@szabo-scandic.com](mailto:mail@szabo-scandic.com)

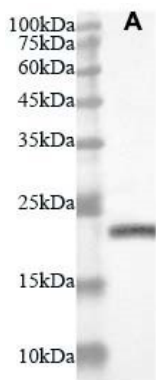
[www.szabo-scandic.com](http://www.szabo-scandic.com)

[linkedin.com/company/szaboscandic](https://www.linkedin.com/company/szaboscandic) 

## Anti-E (SARS-CoV-2) Rabbit Polyclonal Antibody

CATALOG NUMBER: SCV2-E-0100, 100 µg

<b>Introduction</b>	Severe acute respiratory syndrome coronavirus 2 (SARS-CoV-2) is a newly identified coronavirus (2019-nCoV) causing the outbreak of atypical pneumonia in Wuhan China from late 2019.  The genome of 2019-nCoV has 89% nucleotide identity with bat SARS-like-CoVZXC21 and 82% with that of human SARS-CoV. The phylogenetic trees of their orf1a/b, Spike, Envelope, Membrane and Nucleoprotein also clustered closely with those of the bat, civet and human SARS coronaviruses. However, the external subdomain of Spike's receptor binding domain of 2019-nCoV shares only 40% amino acid identity with other SARS-related coronaviruses.
<b>Applications</b>	Western blot (1:1000-1:5000) and ELISA (1:5000-10,000), May be used for other applications
<b>Description</b>	Rabbit polyclonal anti-SARS-CoV-2 membrane protein antibody
<b>Immunogen</b>	Full length recombinant Envelope (E) protein of SARS-CoV-2 (Gene Accession#: MN908947): <i>MYSFVSEETGLIVNSVLLFLAFVVFLVTLAILTALRLCAYCCNIVNVSLVKPSFYVYSRVKLNLSRVPDLLV</i>
<b>Specificity</b>	Reacts with E protein of SARS-CoV-2
<b>Purification</b>	Protein G chromatography
<b>Isotype</b>	IgG
<b>Storage</b>	Store at -20 °C; Stable for 3 months from the date of shipment when kept at 4 °C.
<b>Concentration</b>	1 mg/ml in PBS with 50 % glycerol



**Western blot:**

*Primary antibody: anti-envelope rabbit polyclonal antibody (1:3000 dilution);*

*Secondary antibody: HRP-conjugated goat anti-rabbit IgG (1:8000)*

A: full length envelope (E) protein of SARS-CoV-2