



# SZABO SCANDIC

Part of Europa Biosite

## Produktinformation



Forschungsprodukte & Biochemikalien



Zellkultur & Verbrauchsmaterial



Diagnostik & molekulare Diagnostik



Laborgeräte & Service

Weitere Information auf den folgenden Seiten!  
See the following pages for more information!



### Lieferung & Zahlungsart

siehe unsere [Liefer- und Versandbedingungen](#)

### Zuschläge

- Mindermengenzuschlag
- Trockeneiszuschlag
- Gefahrgutzuschlag
- Expressversand

### SZABO-SCANDIC HandelsgmbH

Quellenstraße 110, A-1100 Wien

T. +43(0)1 489 3961-0

F. +43(0)1 489 3961-7

[mail@szabo-scandic.com](mailto:mail@szabo-scandic.com)

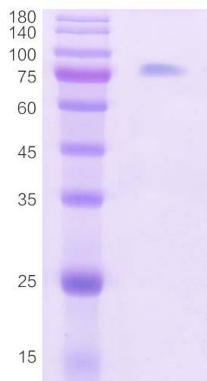
[www.szabo-scandic.com](http://www.szabo-scandic.com)

[linkedin.com/company/szaboscandic](https://www.linkedin.com/company/szaboscandic) 

## Recombinant Human ACE2 Protein

CATALOG NUMBER: hACE2-065P

<b>Introduction</b>	Angiotensin converting enzyme 2 (ACE2) is an enzyme attached to the outer surface (cell membranes) of cells in the lungs, arteries, heart, kidney, and intestines. ACE2 lowers blood pressure by catalysing the cleavage of angiotensin II (a vasoconstrictor peptide) into angiotensin (1-7) (a vasodilator). ACE2 also serves as the entry point into cells for some coronaviruses.
<b>Applications</b>	Western blot standard, ELISA, antigen, etc.
<b>Description</b>	Recombinant human ACE2 protein expressed and purified from HEK293 cells. The binding activity to SARS-CoV-2 spike RBD domain has been tested in a functional ELISA assay.
<b>Viral Protein</b>	Human ACE2 protein (amino acid 18-740)(GenBank No. Q9BYF1) with C-terminal his-tag
<b>Storage</b>	Store at -20 °C or -70 °C; Stable for two weeks from the date of shipment when kept at 4 °C.
<b>Purification</b>	Ion-exchange chromatography
<b>Formulation</b>	Lyophilized powder (1 mg/ml in PBS, pH7.4). Dissolve in 50 µl ddH <sub>2</sub> O to make final concentration of 1 µg/µl.
<b>Endotoxin Level</b>	<1 EU per 1 µg of the protein by LAL test
<b>Purity</b>	≥ 90% (by SDS PAGE)



**SDS-PAGE:** purified recombinant human ACE2 protein

### Human ACE2 Protein (aa 18-740) SQ:

QSTIEEQAKTFLDKFNHEAEDLFYQSSLASWNYNTNI TEENVQNMNAGDKWSAFLKEQSTLAQMYPLQEIQNLTVKLQLQALQQNGSSVLSEDKSKRL  
 NTILNTMSTIYSTGKVCNPDNPQECLELLEPGLNEIMANSLDYNERLWAWESWRSEVVGKQLRPLYEYVVLKNEMARANHYEDYGDYWRGDYEVNGVDGY  
 DYSRGQLIEDVEHTFEEIKPLYEHLHAYVRAKLMNAYPSYISPIGCLPAHLLGDMWGRFWTNLYSLTVPFQKPNIDVTDAMVDQAWDAQRI FKEAEKF  
 FVSVGLPNMTQGFWENSMLTDPGNVQKAVCHPTAWDLGKGD FRI LMCTKVTMDDFLTAHHEMGHIQYDMAYAAQPFLLRNGANEGFHEAVGEIMSLSAA  
 TPKHLKSI GLLSPDFQEDNETEINFLLKQALTI VGTLPFTYMLEKWRWVFKGEIPKDQWMKKWEMKREIVGVVEPVPHDETYCDPASLFHVSNDYSF  
 IRY YTRTLYQFQFQEALCQAAKHEGPHLHKCDISNSTEAGQKLFNMLRLGKSEPWTLALENVVGAKNMNVRPLLNYFEPLFTWLKQNKNSFVGWSTDWS  
 PYADQSIKVRI SLKSALGDKAYEWNNDNEMYLFRSSVAYAMRQYFLKVKNQMILFGEEDVRVANLKPRI SFNFFVTAPKNVSDI I PRTEVEKAI RMSRSR  
 INDAFRLNDNSLEFLGIQPTLGP PNQPPVS