



SZABO SCANDIC

Part of Europa Biosite

Produktinformation



Forschungsprodukte & Biochemikalien



Zellkultur & Verbrauchsmaterial



Diagnostik & molekulare Diagnostik



Laborgeräte & Service

Weitere Information auf den folgenden Seiten!
See the following pages for more information!



Lieferung & Zahlungsart

siehe unsere [Liefer- und Versandbedingungen](#)

Zuschläge

- Mindermengenzuschlag
- Trockeneiszuschlag
- Gefahrgutzuschlag
- Expressversand

SZABO-SCANDIC HandelsgmbH

Quellenstraße 110, A-1100 Wien

T. +43(0)1 489 3961-0

F. +43(0)1 489 3961-7

mail@szabo-scandic.com

www.szabo-scandic.com

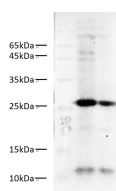
[linkedin.com/company/szaboscandic](https://www.linkedin.com/company/szaboscandic) 

GFP-Tag Monoclonal Antibody

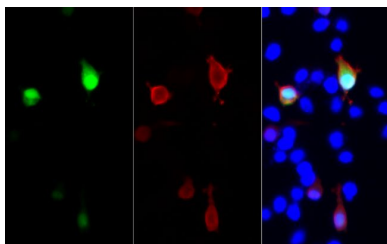
Catalog No.	E-AB-48011	Reactivity	All
Storage	Store at -20°C. Avoid freeze / thaw cycles.	Host	Mouse
Applications	WB,IF	Isotype	IgG2a

Note: Centrifuge before opening to ensure complete recovery of vial contents.

Images



Western blot of GFP transfected Zebrafish with anti-GFP-tag at dilution of 1:1000.



Immunofluorescent analysis of GFP transfected 293 cells with GFP-Tag monoclonal antibody at dilution of 1:500.

Immunogen Information

Immunogen	Recombinant GFP protein expressed by E. Coli
Swissprot	P42212
Synonyms	Green fluorescent protein

Product Information

Calculated MW	27kDa
Observed MW	27kDa
Buffer	PBS with 0.02% sodium azide, 50% glycerol,pH 7.4
Purify	Protein A/G Purified
Dilution	WB: 1:1000-2000;IF: 1:500-2000

Background

The green fluorescent protein (GFP) is a protein that exhibits bright green fluorescence when exposed to light in the blue to ultraviolet range. It is first isolated from the jellyfish *Aequorea victoria* and is frequently used as a reporter of expression. GFP is widely used in gene expression, tracing and protein subcellular localization.

For Research Use Only

Thank you for your recent purchase.
 If you would like to learn more about antibodies, please visit www.elabscience.com.

**Focus on your research
 Service for life science**

Applications:WB-Western Blot IHC-Immunohistochemistry IF-Immunofluorescence IP-Immunoprecipitation FC-Flow cytometry ChIP-Chromatin Immunoprecipitation Reactivity: H-Human R-Rat M-Mouse Mk-Monkey Dg-Dog Ch-Chicken Hm-Hamster Rb-Rabbit Sh-Sheep Pg-Pig Z-Zebrafish X-Xenopus C-Cow.