



SZABO SCANDIC

Part of Europa Biosite

Produktinformation



Forschungsprodukte & Biochemikalien



Zellkultur & Verbrauchsmaterial



Diagnostik & molekulare Diagnostik



Laborgeräte & Service

Weitere Information auf den folgenden Seiten!
See the following pages for more information!



Lieferung & Zahlungsart

siehe unsere [Liefer- und Versandbedingungen](#)

Zuschläge

- Mindermengenzuschlag
- Trockeneiszuschlag
- Gefahrgutzuschlag
- Expressversand

SZABO-SCANDIC HandelsgmbH

Quellenstraße 110, A-1100 Wien

T. +43(0)1 489 3961-0

F. +43(0)1 489 3961-7

mail@szabo-scandic.com

www.szabo-scandic.com

[linkedin.com/company/szaboscandic](https://www.linkedin.com/company/szaboscandic) 

SARS-COV-2 Spike S1 Monoclonal Antibody

Catalog No.:	E-AB-V1005	Applications:	IF, ELISA
Storage:	Store at -20 °C, Avoid freeze / thaw cycles	Clone No.	R007

Important Note: Centrifuge before opening to ensure complete recovery of vial contents.

Antigen Information

Alternate Names	coronavirus s1, coronavirus s2, coronavirus spike, cov spike, ncov RBD, ncov s1, ncov s2, ncov spike, novel coronavirus RBD, Spike RBD
Background	Protein S (PROS1) is glycoprotein and expressed in many cell types supporting its reported involvement in multiple biological processes that include coagulation, apoptosis, cancer development and progression, and the innate immune response. Known receptors bind S1 are ACE2, angiotensin-converting enzyme 2, DPP4, CEACAM etc.. The spike (S) glycoprotein of coronaviruses is known to be essential in the binding of the virus to the host cell at the advent of the infection process. Most notable is severe acute respiratory syndrome (SARS). The severe acute respiratory syndrome-coronavirus (SARS-CoV) spike (S) glycoprotein alone can mediate the membrane fusion required for virus entry and cell fusion. It is also a major immunogen and a target for entry inhibitors. It's been reported that 2019-nCoV can infect the human respiratory epithelial cells through interaction with the human ACE2 receptor. The spike protein is a large type I transmembrane protein containing two subunits, S1 and S2. S1 mainly contains a receptor binding domain (RBD), which is responsible for recognizing the cell surface receptor. S2 contains basic elements needed for the membrane fusion. The S protein plays key parts in the induction of neutralizing-antibody and T-cell responses, as well as protective immunity.

Product Details

Clone No.	R007
Host	Rabbit
Isotype	IgG
Immunogen	Recombinant 2019-nCoV Spike/RBD Protein (RBD) [PKSR030507]
Application	IF, ELISA
Reactivity	SARS-COV2
Dilution	ELISA 1:5,000-10,000
Storage Buffer	0.2 µm filtered solution in PBS
Stability & Storage	Ships on ice packs. Store at -20°C
Description	Has cross-reactivity in ELISA with SARS Coronavirus Spike Protein (S1 Subunit), SARS Coronavirus Spike RBD.

For Research Use Only

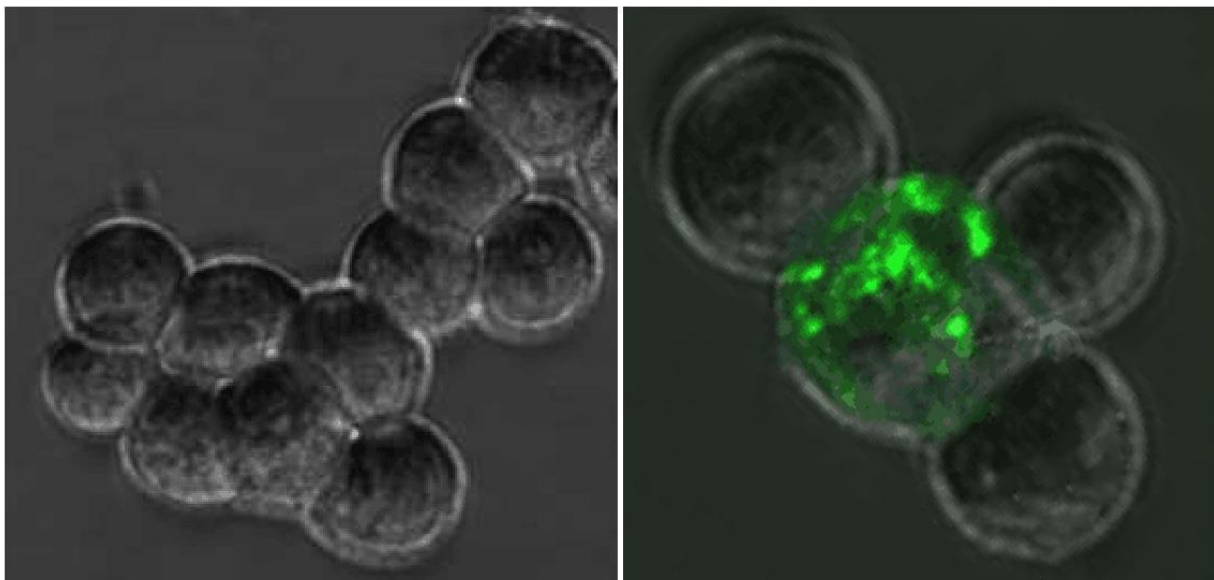
Thank you for your recent purchase.

If you would like to learn more about antibodies, please visit www.elabscience.com

Focus on your research
Service for life science

Applications: **WB**-Western Blot **IHC**-Immunohistochemistry **IF**-Immunofluorescence **IP**-Immunoprecipitation **FC**-Flow cytometry **ChIP**-Chromatin Immunoprecipitation

Images



Immunofluorescence analysis of 293T cells by overexpressed SARS-CoV-2 Spike Protein (Right) or not (Left) using SARS-CoV-2 Spike Monoclonal Antibody at dilution of 1:50.

For Research Use Only

Thank you for your recent purchase.

If you would like to learn more about antibodies, please visit www.elabscience.com

Focus on your research
Service for life science

Applications: **WB**-Western Blot **IHC**-Immunohistochemistry **IF**-Immunofluorescence **IP**-Immunoprecipitation **FC**-Flow cytometry **ChIP**-Chromatin Immunoprecipitation