



SZABO SCANDIC

Part of Europa Biosite

Produktinformation



Forschungsprodukte & Biochemikalien



Zellkultur & Verbrauchsmaterial



Diagnostik & molekulare Diagnostik



Laborgeräte & Service

Weitere Information auf den folgenden Seiten!
See the following pages for more information!



Lieferung & Zahlungsart

siehe unsere [Liefer- und Versandbedingungen](#)

Zuschläge

- Mindermengenzuschlag
- Trockeneiszuschlag
- Gefahrgutzuschlag
- Expressversand

SZABO-SCANDIC HandelsgmbH

Quellenstraße 110, A-1100 Wien

T. +43(0)1 489 3961-0

F. +43(0)1 489 3961-7

mail@szabo-scandic.com

www.szabo-scandic.com

[linkedin.com/company/szaboscandic](https://www.linkedin.com/company/szaboscandic) 

SARS-COV-2 Spike RBD Polyclonal Antibody

Catalog No.: E-AB-V1006 **Applications:** WB,ELISA
Storage: Store at -20 °C, Avoid freeze / thaw cycles

Important Note: Centrifuge before opening to ensure complete recovery of vial contents.

Antigen Information

Alternate Names coronavirus s1,coronavirus s2,coronavirus spike,cov spike,ncov RBD,ncov s1,ncov s2,ncov spike,novel coronavirus RBD ,Spike RBD

Background Protein S (PROS1) is glycoprotein and expressed in many cell types supporting its reported involvement in multiple biological processes that include coagulation, apoptosis, cancer development and progression, and the innate immune response. Known receptors bind S1 are ACE2, angiotensin-converting enzyme 2, DPP4, CEACAM etc.. The spike (S) glycoprotein of coronaviruses is known to be essential in the binding of the virus to the host cell at the advent of the infection process. Most notable is severe acute respiratory syndrome (SARS). The severe acute respiratory syndrome-coronavirus (SARS-CoV) spike (S) glycoprotein alone can mediate the membrane fusion required for virus entry and cell fusion. It is also a major immunogen and a target for entry inhibitors. It's been reported that 2019-nCoV can infect the human respiratory epithelial cells through interaction with the human ACE2 receptor. The spike protein is a large type I transmembrane protein containing two subunits, S1 and S2. S1 mainly contains a receptor binding domain (RBD), which is responsible for recognizing the cell surface receptor. S2 contains basic elements needed for the membrane fusion. The S protein plays key parts in the induction of neutralizing-antibody and T-cell responses, as well as protective immunity.

Product Details

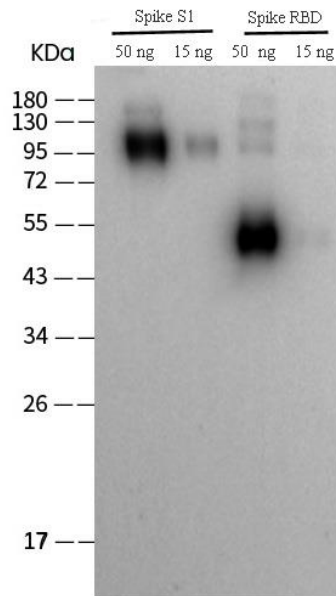
Host Rabbit
Isotype IgG
Immunogen Recombinant 2019-nCoV Spike Protein (RBD) [PKSR030500]
Application WB,ELISA
Reactivity SARS-COV2
Dilution WB 1:1,000-1:5,000 ELISA 1:5,000-10,000
Storage Buffer 0.2 µm filtered solution in PBS
Stability & Storage Ships on ice packs. Store at -20°C
Description Produced in rabbits immunized with purified, recombinant SARS-CoV-2 / 2019-nCoV Spike/RBD Protein. The specific IgG was purified by SARS-CoV-2 / 2019-nCoV Spike/RBD affinity chromatography.

For Research Use Only

Thank you for your recent purchase.
If you would like to learn more about antibodies, please visit www.elabscience.com

Focus on your research
Service for life science

Images



Western Blot analysis of SARS-CoV-2-
Spike 1 protein (PKSR030503) and
Spike RBD protein (PKSR030500) using
SARS-COV-2 Spike RBD Polyclonal
antibody at dilution of 1:2000

For Research Use Only

Thank you for your recent purchase.

If you would like to learn more about antibodies, please visit www.elabscience.com

**Focus on your research
Service for life science**

Applications: **WB**-Western Blot **IHC**-Immunohistochemistry **IF**-Immunofluorescence **IP**-Immunoprecipitation **FC**-Flow cytometry **ChIP**:Chromatin Immunoprecipitation