



# SZABO SCANDIC

Part of Europa Biosite

## Produktinformation



Forschungsprodukte & Biochemikalien



Zellkultur & Verbrauchsmaterial



Diagnostik & molekulare Diagnostik



Laborgeräte & Service

Weitere Information auf den folgenden Seiten!  
See the following pages for more information!



### Lieferung & Zahlungsart

siehe unsere [Liefer- und Versandbedingungen](#)

### Zuschläge

- Mindermengenzuschlag
- Trockeneiszuschlag
- Gefahrgutzuschlag
- Expressversand

### SZABO-SCANDIC HandelsgmbH

Quellenstraße 110, A-1100 Wien

T. +43(0)1 489 3961-0

F. +43(0)1 489 3961-7

[mail@szabo-scandic.com](mailto:mail@szabo-scandic.com)

[www.szabo-scandic.com](http://www.szabo-scandic.com)

[linkedin.com/company/szaboscandic](https://www.linkedin.com/company/szaboscandic) 



**CD2 FITC - CD7 PE. Mouse Bi-Test™ Reagents (FITC/RPE)**

**COMMENTS**

Identification of human T cells and subset of NK cells associated with the receptor for sheep erythrocytes rosettes expressing the 45-50,000 M.W. surface antigen. Identification of human T lymphocytes in multiple stages of T cell development, including a major subset of mature peripheral T cell. CD7 antigen is often increased on T leukemic cells. The CD7 molecule is a 40,000 M.W. surface antigen that is expressed on T-Lymphoid and myeloid precursors in fetal liver and bone marrow.

**CONCENTRATION**

See vial for concentration

**SHIP CONDITIONS**

Ship at ambient temperature, do not freeze, refrigerate upon arrival

**STORAGE CUSTOMER**

Product should be stored at 4-8°C. DO NOT FREEZE

**STABILITY**

Reagents are stable for the period shown on the vial label when stored properly

**USE**

**PBMC:** Add 10 µl of MAB/10<sup>6</sup> PBMC in 100 µl PBS. Mix gently and incubate for 15 minutes at 2° to 8°C. Wash twice with PBS and analyze or fix with 0.5% v/v of paraformaldehyde in PBS and analyze. **WHOLE BLOOD:** Add 10 µl of MAB /100 µl of whole blood. Mix gently and incubate for 15 minutes at room temperature 20°C. Lyse the whole blood. Wash once with PBS and analyze or fix with 0.5% v/v of paraformaldehyde in PBS and analyze. See instrument manufacturer's instructions for Lysed Whole Blood and Immunofluorescence analysis with a flow cytometer or microscope.

**ORDERING INFORMATION**

**CATALOG NUMBER**

0027

**SIZE**

100 Tests

**FORM**

Bi-Test (FITC/RPE) Reagent

**HOST/CLONE**

Mouse

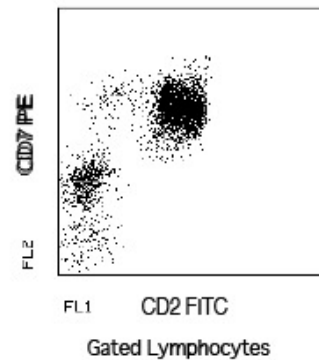
**FORMULATION**

Provided as sterile filtered solution in phosphate buffered saline with 0.08% sodium azide and 0.2% carrier protein

**ISOTYPE**

**APPLICATIONS**

Flow Cytometry



Peripheral blood lymphocytes stained with Exalpa's CD2 FITC-CD7 PE Bi-Test Reagent (Cat. No. 0027)