



SZABO SCANDIC

Part of Europa Biosite

Produktinformation



Forschungsprodukte & Biochemikalien



Zellkultur & Verbrauchsmaterial



Diagnostik & molekulare Diagnostik



Laborgeräte & Service

Weitere Information auf den folgenden Seiten!
See the following pages for more information!



Lieferung & Zahlungsart

siehe unsere [Liefer- und Versandbedingungen](#)

Zuschläge

- Mindermengenzuschlag
- Trockeneiszuschlag
- Gefahrgutzuschlag
- Expressversand

SZABO-SCANDIC HandelsgmbH

Quellenstraße 110, A-1100 Wien

T. +43(0)1 489 3961-0

F. +43(0)1 489 3961-7

mail@szabo-scandic.com

www.szabo-scandic.com

[linkedin.com/company/szaboscandic](https://www.linkedin.com/company/szaboscandic) 



CD2 FITC - CD7 PE. Mouse Bi-Test™ Reagents (FITC/RPE)

COMMENTS

Identification of human T cells and subset of NK cells associated with the receptor for sheep erythrocytes rosettes expressing the 45-50,000 M.W. surface antigen. Identification of human T lymphocytes in multiple stages of T cell development, including a major subset of mature peripheral T cell. CD7 antigen is often increased on T leukemic cells. The CD7 molecule is a 40,000 M.W. surface antigen that is expressed on T-Lymphoid and myeloid precursors in fetal liver and bone marrow.

CONCENTRATION

See vial for concentration

SHIP CONDITIONS

Ship at ambient temperature, do not freeze, refrigerate upon arrival

STORAGE CUSTOMER

Product should be stored at 4-8°C. DO NOT FREEZE

STABILITY

Reagents are stable for the period shown on the vial label when stored properly

USE

PBMC: Add 10 µl of MAB/10⁶ PBMC in 100 µl PBS. Mix gently and incubate for 15 minutes at 2° to 8°C. Wash twice with PBS and analyze or fix with 0.5% v/v of paraformaldehyde in PBS and analyze. **WHOLE BLOOD:** Add 10 µl of MAB /100 µl of whole blood. Mix gently and incubate for 15 minutes at room temperature 20°C. Lyse the whole blood. Wash once with PBS and analyze or fix with 0.5% v/v of paraformaldehyde in PBS and analyze. See instrument manufacturer's instructions for Lysed Whole Blood and Immunofluorescence analysis with a flow cytometer or microscope.

ORDERING INFORMATION

CATALOG NUMBER

0027S

SIZE

50 Tests

FORM

Bi-Test (FITC/RPE) Reagent

HOST/CLONE

Mouse

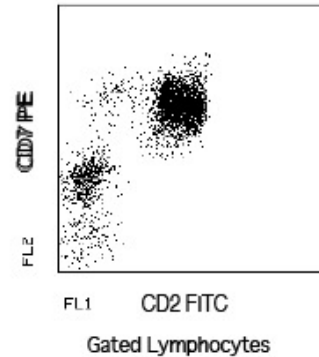
FORMULATION

Provided as sterile filtered solution in phosphate buffered saline with 0.08% sodium azide and 0.2% carrier protein

ISOTYPE

APPLICATIONS

Flow Cytometry



Peripheral blood lymphocytes stained with Exalpa's CD2 FITC-CD7 PE Bi-Test Reagent (Cat. No. 0027)