



# SZABO SCANDIC

Part of Europa Biosite

## Produktinformation



Forschungsprodukte & Biochemikalien



Zellkultur & Verbrauchsmaterial



Diagnostik & molekulare Diagnostik



Laborgeräte & Service

Weitere Information auf den folgenden Seiten!  
See the following pages for more information!



### Lieferung & Zahlungsart

siehe unsere [Liefer- und Versandbedingungen](#)

### Zuschläge

- Mindermengenzuschlag
- Trockeneiszuschlag
- Gefahrgutzuschlag
- Expressversand

### SZABO-SCANDIC HandelsgmbH

Quellenstraße 110, A-1100 Wien

T. +43(0)1 489 3961-0

F. +43(0)1 489 3961-7

[mail@szabo-scandic.com](mailto:mail@szabo-scandic.com)

[www.szabo-scandic.com](http://www.szabo-scandic.com)

[linkedin.com/company/szaboscandic](https://www.linkedin.com/company/szaboscandic) 



Kappa Light Chain. Mouse Monoclonal Antibody

**BACKGROUND**

Antibody to the k light chain of immunoglobulin is reportedly useful in the identification of leukemias, plasmacytomas, and certain non-Hodgkin's lymphomas. Demonstration of clonality in lymphoid infiltrates indicates that the infiltrate is clonal and therefore malignant.

**ORDERING INFORMATION**

**CATALOG NUMBER**

X2782M

**SIZE**

100  $\mu$ g

**FORM**

Unconjugated

**HOST/CLONE**

Mouse Clone L1C1

**FORMULATION**

Provided as solution in phosphate buffered saline with 0.08% sodium azide

**CONCENTRATION**

See vial for concentration

**ISOTYPE**

**APPLICATIONS**

Immunohistochemistry

**SPECIES REACTIVITY**

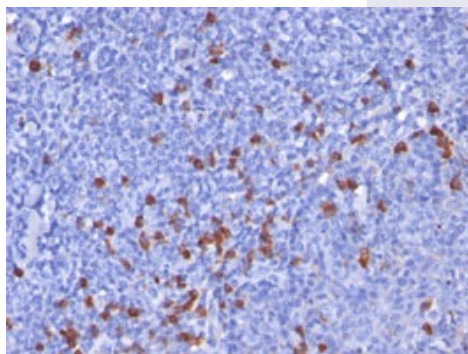
Human

**ACCESSION NUMBER**

**IMMUNOGEN**

Hybridoma produced from mice immunized with human B-lymphoma cells.

Immunohistochemical staining of human tonsil tissue with IGKC antibody (Cat. No. X2782M)



**POSITIVE CONTROL/TISSUE EXPRESSION**

Tonsil

**COMMENTS**

Antibody can be used for Immunohistochemistry (10-20  $\mu\text{g/ml}$ ). Antigen retrieval with pretreatment of deparaffinized tissue with heat-induced epitope retrieval. Optimal concentration should be evaluated by serial dilutions.

**PURIFICATION**

Protein A/G Chromatography

**SHIP CONDITIONS**

Ship at ambient temperature, freeze upon arrival

**STORAGE CUSTOMER**

Product should be stored at  $-20^{\circ}\text{C}$ . Aliquot to avoid freeze/thaw cycles

**STABILITY**

Products are stable for one year from purchase when stored properly

**REFERENCES****PRODUCT SPECIFIC REFERENCES**