



SZABO SCANDIC

Part of Europa Biosite

Produktinformation



Forschungsprodukte & Biochemikalien



Zellkultur & Verbrauchsmaterial



Diagnostik & molekulare Diagnostik



Laborgeräte & Service

Weitere Information auf den folgenden Seiten!
See the following pages for more information!



Lieferung & Zahlungsart

siehe unsere [Liefer- und Versandbedingungen](#)

Zuschläge

- Mindermengenzuschlag
- Trockeneiszuschlag
- Gefahrgutzuschlag
- Expressversand

SZABO-SCANDIC HandelsgmbH

Quellenstraße 110, A-1100 Wien

T. +43(0)1 489 3961-0

F. +43(0)1 489 3961-7

mail@szabo-scandic.com

www.szabo-scandic.com

[linkedin.com/company/szaboscandic](https://www.linkedin.com/company/szaboscandic) 

Kappa Light Chain. Mouse Monoclonal Antibody

BACKGROUND

Antibody to the k light chain of immunoglobulin is reportedly useful in the identification of leukemias, plasmacytomas, and certain non-Hodgkin's lymphomas. Demonstration of clonality in lymphoid infiltrates indicates that the infiltrate is clonal and therefore malignant.

ORDERING INFORMATION

CATALOG NUMBER
X2782M

SIZE
100 μ g
FORM
Unconjugated

HOST/CLONE
Mouse Clone L1C1

FORMULATION
Provided as solution in phosphate buffered saline with 0.08% sodium azide

CONCENTRATION
See vial for concentration

ISOTYPE

APPLICATIONS
Immunohistochemistry

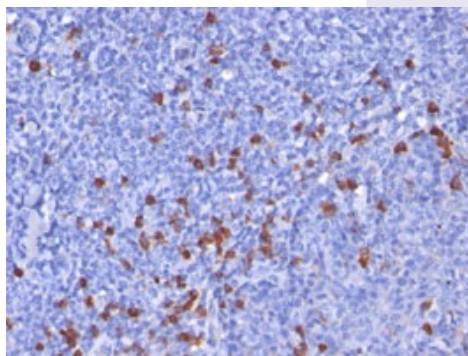
SPECIES REACTIVITY
Human

ACCESSION NUMBER

IMMUNOGEN

Hybridoma produced from mice immunized with human B-lymphoma cells.

Immunohistochemical staining of human tonsil tissue with IGKC antibody (Cat. No. X2782M)



POSITIVE CONTROL/TISSUE EXPRESSION

Tonsil

COMMENTS

Antibody can be used for Immunohistochemistry (10-20 $\mu\text{g/ml}$). Antigen retrieval with pretreatment of deparaffinized tissue with heat-induced epitope retrieval. Optimal concentration should be evaluated by serial dilutions.

PURIFICATION

Protein A/G Chromatography

SHIP CONDITIONS

Ship at ambient temperature, freeze upon arrival

STORAGE CUSTOMER

Product should be stored at -20°C . Aliquot to avoid freeze/thaw cycles

STABILITY

Products are stable for one year from purchase when stored properly

REFERENCES**PRODUCT SPECIFIC REFERENCES**