



# SZABO SCANDIC

Part of Europa Biosite

## Produktinformation



Forschungsprodukte & Biochemikalien



Zellkultur & Verbrauchsmaterial



Diagnostik & molekulare Diagnostik



Laborgeräte & Service

Weitere Information auf den folgenden Seiten!  
See the following pages for more information!



### Lieferung & Zahlungsart

siehe unsere [Liefer- und Versandbedingungen](#)

### Zuschläge

- Mindermengenzuschlag
- Trockeneiszuschlag
- Gefahrgutzuschlag
- Expressversand

### SZABO-SCANDIC HandelsgmbH

Quellenstraße 110, A-1100 Wien

T. +43(0)1 489 3961-0

F. +43(0)1 489 3961-7

[mail@szabo-scandic.com](mailto:mail@szabo-scandic.com)

[www.szabo-scandic.com](http://www.szabo-scandic.com)

[linkedin.com/company/szaboscandic](https://www.linkedin.com/company/szaboscandic) 

**Chromogranin A. Rabbit Antigen Immunoaffinity Purified Polyclonal**  
SP-1, Pituitary Secretory Protein I

**BACKGROUND**

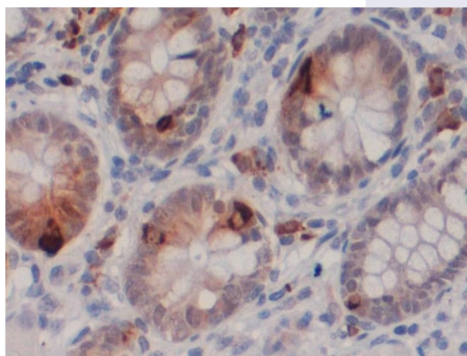
Chromogranin A is the major protein co-stored and co-released with catecholamines from secretory vesicles in adrenal medulla and postganglionic sympathetic axons. It is required for formation of catecholamine secretory vesicles in chromaffin cells and its expression may be sufficient even to induce a regulated secretory system in non-secretory cells. It is also a pro-hormone that gives rise to biologically active peptides such as the dysglycemic peptide pancreastatin, the antimicrobial peptide chromacin, the vasodilator vasostatin, and catestatin that acts to inhibit catecholamine release.

**IMMUNOGEN**

Synthetic peptide derived from human Chromogranin A protein

Immunohistochemical staining of human small bowel tissue using Chromogranin A antibody (Cat. No. X2789P). Antibody used at 1  $\mu$ g/ml.

4.  
Pathologists comments: Staining in endocrine cells within the crypts.



**ORDERING INFORMATION**

**CATALOG NUMBER**  
X2789P

**SIZE**  
100  $\mu$ g

**FORM**  
Affinity Purified

**HOST/CLONE**  
Rabbit

**FORMULATION**  
Provided as solution in phosphate buffered saline with 0.08% sodium azide

**CONCENTRATION**  
See vial for concentration

**ISOTYPE**  
Ig

**APPLICATIONS**  
Western blotting,  
Immunohistochemistry

**SPECIES REACTIVITY**  
Human

**ACCESSION NUMBER**  
Human P10645

**POSITIVE CONTROL/TISSUE EXPRESSION**

Human small bowel tissue

**COMMENTS**

Antibody can be used for immunohistochemistry (1-3  $\mu\text{g/ml}$ ) and Western blotting (1-2  $\mu\text{g/ml}$ ). Optimal concentration should be evaluated by serial dilutions.

**PURIFICATION**

Antigen Immunoaffinity Purification

**SHIP CONDITIONS**

Ship at ambient temperature, freeze upon arrival

**STORAGE CUSTOMER**

Product should be stored at  $-20^{\circ}\text{C}$ . Aliquot to avoid freeze/thaw cycles

**STABILITY**

Products are stable for one year from purchase when stored properly

**REFERENCES**

1. Konecki, D.S., et al. 'The primary structure of human chromogranin A and pancreastatin' J. Biol. Chem., 262, 17026-17030 (1987)
2. Pasqua, T., et al. 'Full-length human chromogranin-A cardioactivity: myocardial, coronary, and stimulus-induced processing evidence in normotensive and hypertensive male rat hearts.' Endocrinology, 154, 3353-3365 (2013)
3. Chen, Y., et al. 'Naturally occurring genetic variants in human chromogranin A (CHGA) associated with hypertension as well as hypertensive renal disease.' Cell Mol. Neurobiol., 30, 1395-1400 (2010)
4. Mahapatra, N.R., et al. 'Hypertension from targeted ablation of chromogranin A can be rescued by the human ortholog.' J. Clin. Invest., 115, 1942-1952 (2005)
5. Mahata, S.K., et al. 'Novel autocrine feedback control of catecholamine release. A discrete chromogranin a fragment is a noncompetitive nicotinic cholinergic antagonist.' J. Clin. Invest., 100, 1623-1633 (1997).

**PRODUCT SPECIFIC REFERENCES**