



SZABO SCANDIC

Part of Europa Biosite

Produktinformation



Forschungsprodukte & Biochemikalien



Zellkultur & Verbrauchsmaterial



Diagnostik & molekulare Diagnostik



Laborgeräte & Service

Weitere Information auf den folgenden Seiten!
See the following pages for more information!



Lieferung & Zahlungsart

siehe unsere [Liefer- und Versandbedingungen](#)

Zuschläge

- Mindermengenzuschlag
- Trockeneiszuschlag
- Gefahrgutzuschlag
- Expressversand

SZABO-SCANDIC HandelsgmbH

Quellenstraße 110, A-1100 Wien

T. +43(0)1 489 3961-0

F. +43(0)1 489 3961-7

mail@szabo-scandic.com

www.szabo-scandic.com

[linkedin.com/company/szaboscandic](https://www.linkedin.com/company/szaboscandic) 

Programmed cell death protein 1. Rabbit Antigen Immunoaffinity Purified Polyclonal
CD279, PD1

BACKGROUND

Inhibitory cell surface receptor involved in the regulation of T-cell function during immunity and tolerance. Upon ligand binding, inhibits T-cell effector functions in an antigen-specific manner. Possible cell death inducer, in association with other factors.

ORDERING INFORMATION

CATALOG NUMBER
X2798P

SIZE
100 μ g
FORM
Affinity Purified

HOST/CLONE
Rabbit

FORMULATION
Provided as solution in phosphate buffered saline with 0.08% sodium azide

CONCENTRATION
See vial for concentration

ISOTYPE
Ig

APPLICATIONS
Western blot, Immunohistochemistry

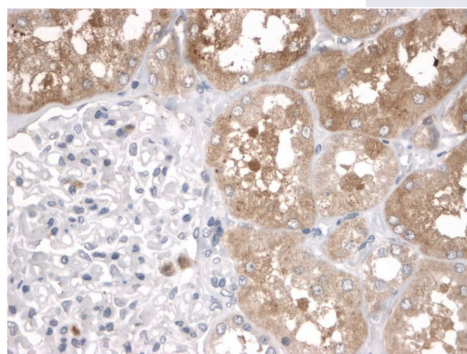
SPECIES REACTIVITY
Human

ACCESSION NUMBER
Human Q15116

IMMUNOGEN

Synthetic peptide derived from the human PD1 protein.

Immunohistochemical staining of human kidney using PD1 antibody (Cat. No. X2798P). Antibody used at 2 μ g/ml. 40x magnification. Pathologists Comments: Granular staining in the cytoplasm of tubular cells and in scattered glomerular cells.



POSITIVE CONTROL/TISSUE EXPRESSION

Human kidney

COMMENTS

Antibody can be used for immunohistochemistry (2-4 $\mu\text{g/ml}$) and Western blotting (1-2 $\mu\text{g/ml}$). Optimal concentration should be evaluated by serial dilutions.

PURIFICATION

Antigen Immunoaffinity Purification

SHIP CONDITIONS

Ship at ambient temperature, freeze upon arrival

STORAGE CUSTOMER

Product should be stored at -20°C . Aliquot to avoid freeze/thaw cycles

STABILITY

Products are stable for one year from purchase when stored properly

REFERENCES

1. Shinohara, T., et al. 'Structure and chromosomal localization of the human PD-1 gene (PDCD1)' Genomics, 23, 704-706 (1994)
2. Fife, B.T., Pauken, K.E. 'The role of the PD-1 pathway in autoimmunity and peripheral tolerance.' Ann. N.Y. Acad. Sci., 1217, 45-59 (2011)

PRODUCT SPECIFIC REFERENCES