



SZABO SCANDIC

Part of Europa Biosite

Produktinformation



Forschungsprodukte & Biochemikalien



Zellkultur & Verbrauchsmaterial



Diagnostik & molekulare Diagnostik



Laborgeräte & Service

Weitere Information auf den folgenden Seiten!
See the following pages for more information!



Lieferung & Zahlungsart

siehe unsere [Liefer- und Versandbedingungen](#)

Zuschläge

- Mindermengenzuschlag
- Trockeneiszuschlag
- Gefahrgutzuschlag
- Expressversand

SZABO-SCANDIC HandelsgmbH

Quellenstraße 110, A-1100 Wien

T. +43(0)1 489 3961-0

F. +43(0)1 489 3961-7

mail@szabo-scandic.com

www.szabo-scandic.com

[linkedin.com/company/szaboscandic](https://www.linkedin.com/company/szaboscandic) 

ATF3 antibody [7F1B10]

Cat No. GTX02812

Host	Mouse
Clonality	Monoclonal
Isotype	IgG1
Application	WB, ICC/IF, FACS, ELISA
Reactivity	Human

Package
100 µl

APPLICATION

Application Note

*Optimal dilutions/concentrations should be determined by the researcher.

Suggested dilution	Dilution
WB	1:500-1:2000
ICC/IF	1:200-1:1000
FACS	1:200-1:400
ELISA	1:10000

Not tested in other applications.

Calculated MW 21 kDa. ([Note](#))

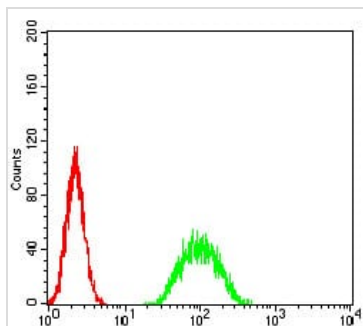
PROPERTIES

Form	Liquid
Buffer	PBS, 0.05% sodium azide
Storage	Store as concentrated solution. Centrifuge briefly prior to opening vial. For short-term storage (1-2 weeks), store at 4°C. For long-term storage, aliquot and store at -20°C or below. Avoid multiple freeze-thaw cycles.
Concentration	1 mg/ml (Please refer to the vial label for the specific concentration.)
Immunogen	Purified recombinant fragment of human ATF3 (AA: 1-181) expressed in E.Coli.
Purification	Purified IgG1
Conjugation	Unconjugated
Note	For laboratory use only. Not for any clinical, therapeutic, or diagnostic use in humans or animals. Not for animal or human consumption.



For full product information, images and publications, please visit our [website](#).

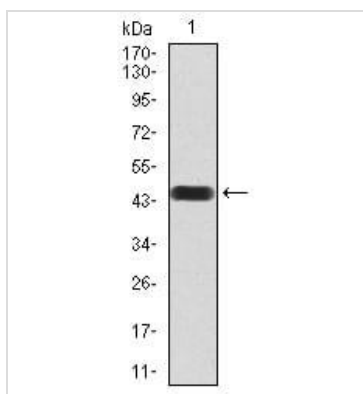
DATA IMAGES

**GTX02812 FACS Image**

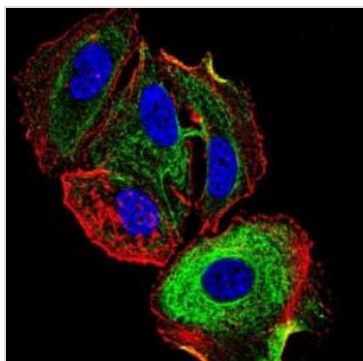
FACS analysis of A549 cells using GTX02812 ATF3 antibody [7F1B10].

Green : Primary antibody

Red : Negative control

**GTX02812 WB Image**

WB analysis of human ATF3 (AA: 1-181) recombinant protein using GTX02812 ATF3 antibody [7F1B10].

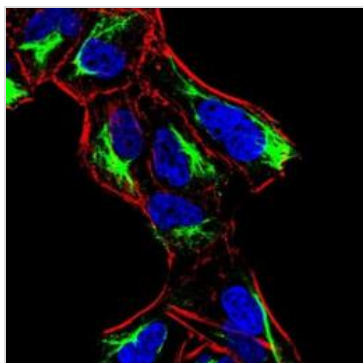
**GTX02812 ICC/IF Image**

ICC/IF analysis of MCF-7 cells using GTX02812 ATF3 antibody [7F1B10].

Green : Primary antibody

Blue : DRAQ5 fluorescent DNA dye

Red : Actin filaments

**GTX02812 ICC/IF Image**

ICC/IF analysis of HeLa cells using GTX02812 ATF3 antibody [7F1B10].

Green : Primary antibody

Blue : DRAQ5 fluorescent DNA dye

Red : Actin filaments



For full product information, images and publications, please visit our [website](#).