



# SZABO SCANDIC

Part of Europa Biosite

## Produktinformation



Forschungsprodukte & Biochemikalien



Zellkultur & Verbrauchsmaterial



Diagnostik & molekulare Diagnostik



Laborgeräte & Service

Weitere Information auf den folgenden Seiten!  
See the following pages for more information!



### Lieferung & Zahlungsart

siehe unsere [Liefer- und Versandbedingungen](#)

### Zuschläge

- Mindermengenzuschlag
- Trockeneiszuschlag
- Gefahrgutzuschlag
- Expressversand

### SZABO-SCANDIC HandelsgmbH

Quellenstraße 110, A-1100 Wien

T. +43(0)1 489 3961-0

F. +43(0)1 489 3961-7

[mail@szabo-scandic.com](mailto:mail@szabo-scandic.com)

[www.szabo-scandic.com](http://www.szabo-scandic.com)

[linkedin.com/company/szaboscandic](https://www.linkedin.com/company/szaboscandic) 

## GSDMA antibody

Cat. No. GTX03715

<b>Host</b>	Rabbit
<b>Clonality</b>	Polyclonal
<b>Isotype</b>	IgG
<b>Application</b>	WB, IHC-P
<b>Reactivity</b>	Human, Mouse, Rat

Package  
100 µl

## APPLICATION

## Application Note

\*Optimal dilutions/concentrations should be determined by the researcher.

Suggested dilution	Recommended dilution
WB	1:500-1:2000
IHC-P	1:100-1:500

Not tested in other applications.

**Calculated MW** 49 kDa. ([Note](#))

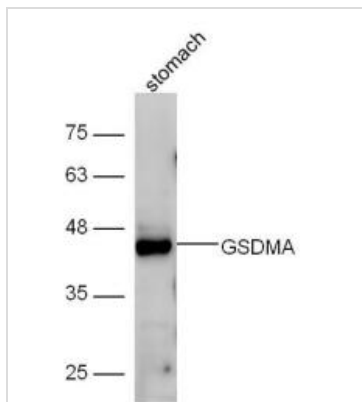
## PROPERTIES

<b>Form</b>	Liquid
<b>Buffer</b>	0.01M TBS pH7.4, 1% BSA, 50% Glycerol
<b>Preservative</b>	0.03% Proclin300
<b>Storage</b>	Store as concentrated solution. Centrifuge briefly prior to opening vial. For short-term storage (1-2 weeks), store at 4°C. For long-term storage, aliquot and store at -20°C or below. Avoid multiple freeze-thaw cycles.
<b>Concentration</b>	1 mg/ml (Please refer to the vial label for the specific concentration.)
<b>Immunogen</b>	KLH conjugated synthetic peptide derived from human Osteopontin (21-120).
<b>Purification</b>	Protein A purified
<b>Conjugation</b>	Unconjugated
<b>Note</b>	For laboratory use only. Not for any clinical, therapeutic, or diagnostic use in humans or animals. Not for animal or human consumption.



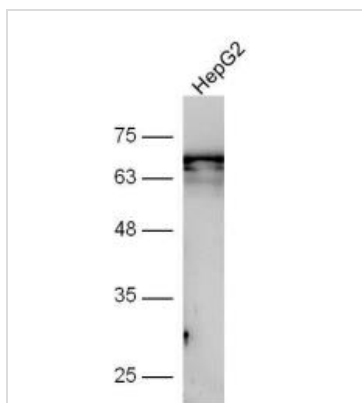
For full product information, images and publications, please visit our [website](#).

## DATA IMAGES

**GTX03715 WB Image**

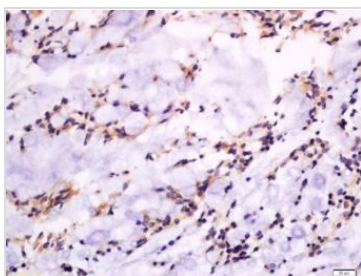
WB analysis of mouse stomach tissue lysates using GTX03715 GSDMA antibody.

Dilution : 1:300

**GTX03715 WB Image**

WB analysis of HepG2 cell lysates using GTX03715 GSDMA antibody.

Dilution : 1:300

**GTX03715 IHC-P Image**

IHC-P analysis of rat rectum tissue using GTX03715 GSDMA antibody.

Dilution : 1:300



For full product information, images and publications, please visit our [website](#).