



SZABO SCANDIC

Part of Europa Biosite

Produktinformation



Forschungsprodukte & Biochemikalien



Zellkultur & Verbrauchsmaterial



Diagnostik & molekulare Diagnostik



Laborgeräte & Service

Weitere Information auf den folgenden Seiten!
See the following pages for more information!



Lieferung & Zahlungsart

siehe unsere [Liefer- und Versandbedingungen](#)

Zuschläge

- Mindermengenzuschlag
- Trockeneiszuschlag
- Gefahrgutzuschlag
- Expressversand

SZABO-SCANDIC HandelsgmbH

Quellenstraße 110, A-1100 Wien

T. +43(0)1 489 3961-0

F. +43(0)1 489 3961-7

mail@szabo-scandic.com

www.szabo-scandic.com

[linkedin.com/company/szaboscandic](https://www.linkedin.com/company/szaboscandic) 

Goat anti-Human IgA (Heavy chain) antibody, pre-adsorbed (FITC)

Cat. No. GTX04299-06

Host	Goat
Clonality	Polyclonal
Isotype	IgG
Application	WB, ICC/IF, IHC-P, IHC-Fr, FACS, IP, ELISA, Depletion, Multiplexing
Reactivity	Human

Package
1 mg

APPLICATION

Application Note

*Optimal dilutions/concentrations should be determined by the researcher.

Suggested dilution	Recommended dilution
WB	Assay dependent
ICC/IF	Assay dependent
IHC-P	Assay dependent
IHC-Fr	Assay dependent
FACS	$\leq 1 \mu\text{g}/106\text{cells}$ in a final volume of 100 μL
IP	Assay dependent
ELISA	1:100-1:400
Depletion	Assay dependent
Multiplexing	Assay dependent

Not tested in other applications.

Product Note Preadsorbed with Human IgG and IgM. May react with IgA from other species.

PROPERTIES

Form	Liquid
Buffer	PBS
Preservative	0.09 % sodium azide
Storage	Store as concentrated solution. Centrifuge briefly prior to opening vial. Store at 4°C. Protect from light.
Concentration	1 mg/ml (Please refer to the vial label for the specific concentration.)
Immunogen	Human IgA
Purification	Purified by antigen-affinity chromatography From serum



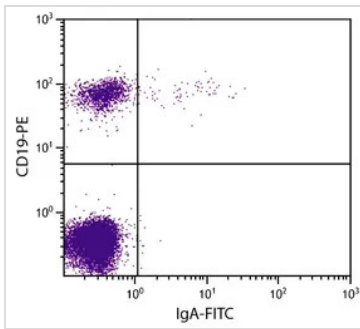
For full product information, images and publications, please visit our [website](#).

Conjugation Fluorescein isothiocyanate (FITC)

For laboratory research use only. Not for any clinical, therapeutic, or diagnostic use in humans or animals. Not for animal or human consumption.

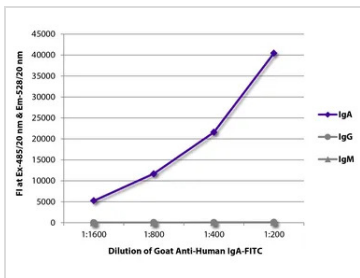
Note Purchasers shall not, and agree not to enable third parties to, analyze, copy, reverse engineer or otherwise attempt to determine the structure or sequence of the product.

DATA IMAGES



GTX04299-06 FACS Image

FACS analysis of human peripheral blood lymphocytes using GTX04299-06 Goat anti-Human IgA (Heavy chain) antibody, pre-adsorbed (FITC) and Mouse anti-Human CD19 antibody (PE).



GTX04299-06 ELISA Image

ELISA analysis of human IgA, IgG, IgM using serially diluted GTX04299-06 Goat anti-Human IgA (Heavy chain) antibody, pre-adsorbed (FITC).



For full product information, images and publications, please visit our [website](#).