



SZABO SCANDIC

Part of Europa Biosite

Produktinformation



Forschungsprodukte & Biochemikalien



Zellkultur & Verbrauchsmaterial



Diagnostik & molekulare Diagnostik



Laborgeräte & Service

Weitere Information auf den folgenden Seiten!
See the following pages for more information!



Lieferung & Zahlungsart

siehe unsere [Liefer- und Versandbedingungen](#)

Zuschläge

- Mindermengenzuschlag
- Trockeneiszuschlag
- Gefahrgutzuschlag
- Expressversand

SZABO-SCANDIC HandelsgmbH

Quellenstraße 110, A-1100 Wien

T. +43(0)1 489 3961-0

F. +43(0)1 489 3961-7

mail@szabo-scandic.com

www.szabo-scandic.com

[linkedin.com/company/szaboscandic](https://www.linkedin.com/company/szaboscandic) 

Goat anti-Rabbit IgG antibody, pre-adsorbed (Cy5)

Cat. No. GTX04553-24

Host	Goat
Clonality	Polyclonal
Isotype	IgG
Application	WB, Dot, ELISA
Reactivity	Rabbit

Package

1 mg

APPLICATION

Application Note

*Optimal dilutions/concentrations should be determined by the researcher.

Suggested dilution	Recommended dilution
WB	Assay dependent
Dot	Assay dependent
ELISA	1:10,000-1:50,000

Not tested in other applications.

Product Note

Assay by immunoelectrophoresis resulted in a single precipitin arc against anti-Goat Serum, Rabbit IgG and Rabbit Serum. No reaction was observed against Bovine, Chicken, Goat, Guinea Pig, Hamster, Horse, Human, Mouse, Rat and Sheep Serum Proteins.

PROPERTIES

Form	Liquid
Buffer	0.02 M Potassium phosphate pH 7.2, 0.15 M Sodium chloride, 10 mg/mL BSA
Preservative	0.01% sodium azide
Storage	Store as concentrated solution. Centrifuge briefly prior to opening vial. For short-term storage (1-2 weeks), store at 4°C. For long-term storage, aliquot and store at -20°C or below. Avoid multiple freeze-thaw cycles.
Concentration	1 mg/ml (Please refer to the vial label for the specific concentration.)
Immunogen	Rabbit IgG whole molecule
Purification	Purified by antigen-affinity chromatography From serum
Conjugation	Cyanine5 (Cy5)



For full product information, images and publications, please visit our [website](#).

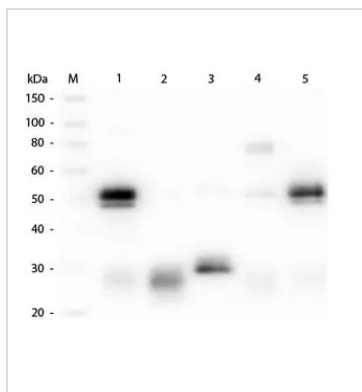
Date 2024 / 01 / 08 Page 1 of 2

For laboratory research use only. Not for any clinical, therapeutic, or diagnostic use in humans or animals. Not for animal or human consumption.

Note

Purchasers shall not, and agree not to enable third parties to, analyze, copy, reverse engineer or otherwise attempt to determine the structure or sequence of the product.

DATA IMAGES

**GTX04553-24 WB Image**

WB analysis of various samples using GTX04553-24 Goat anti-Rabbit IgG antibody, pre-adsorbed (Cy5).

Lane M : Marker

Lane 1 : Rabbit IgG F(ab) fragment

Lane 2 : Rabbit IgG F(c) fragment

Lane 3 : Rabbit IgM whole molecule

Lane 4 : Normal rabbit serum

Lane 5 : Normal Rabbit Serum (p/n B309)

Dilution : 1:1000

Loading : 50 ng



For full product information, images and publications, please visit our [website](#).