



SZABO SCANDIC

Part of Europa Biosite

Produktinformation



Forschungsprodukte & Biochemikalien



Zellkultur & Verbrauchsmaterial



Diagnostik & molekulare Diagnostik



Laborgeräte & Service

Weitere Information auf den folgenden Seiten!
See the following pages for more information!



Lieferung & Zahlungsart

siehe unsere [Liefer- und Versandbedingungen](#)

Zuschläge

- Mindermengenzuschlag
- Trockeneiszuschlag
- Gefahrgutzuschlag
- Expressversand

SZABO-SCANDIC HandelsgmbH

Quellenstraße 110, A-1100 Wien

T. +43(0)1 489 3961-0

F. +43(0)1 489 3961-7

mail@szabo-scandic.com

www.szabo-scandic.com

[linkedin.com/company/szaboscandic](https://www.linkedin.com/company/szaboscandic) 

Rabbit anti-Llama VHH Single Domain antibody

Cat. No. GTX04578

Host	Rabbit
Clonality	Polyclonal
Isotype	IgG
Application	WB, ICC/IF, ELISA
Reactivity	Llama

Package
100 µl

APPLICATION

Application Note

*Optimal dilutions/concentrations should be determined by the researcher.

Suggested dilution	Recommended dilution
WB	1:1000-1:5000
ICC/IF	Assay dependent
ELISA	1:10000-1:50000

Not tested in other applications.

Product Note It detects recombinant VhH proteins, native Llama IgG2 and native Llama IgG3.

PROPERTIES

Form	Liquid
Buffer	0.02 M Potassium Phosphate pH 7.2, 0.15 M NaCl
Preservative	0.01% Sodium azide
Storage	Store as concentrated solution. Centrifuge briefly prior to opening vial. For short-term storage (1-2 weeks), store at 4°C. For long-term storage, aliquot and store at -20°C or below. Avoid multiple freeze-thaw cycles.
Concentration	1.08 mg/ml (Please refer to the vial label for the specific concentration.)
Immunogen	A recombinant VhH camelid domain protein
Purification	Protein A purified
Conjugation	Unconjugated

Note

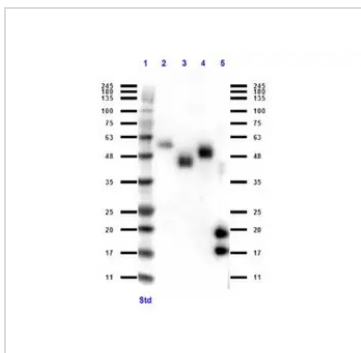
For laboratory research use only. Not for any clinical, therapeutic, or diagnostic use in humans or animals. Not for animal or human consumption.

Purchasers shall not, and agree not to enable third parties to, analyze, copy, reverse engineer or otherwise attempt to determine the structure or sequence of the product.



For full product information, images and publications, please visit our [website](#).

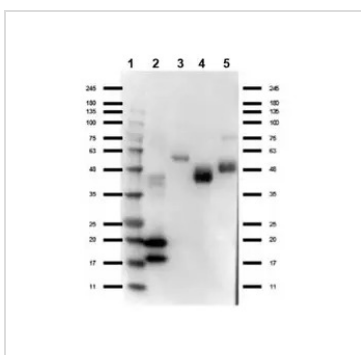
DATA IMAGES



GTX04578 WB Image

WB analysis of various samples using GTX04578 Rabbit anti-Llama VHH Single Domain antibody.

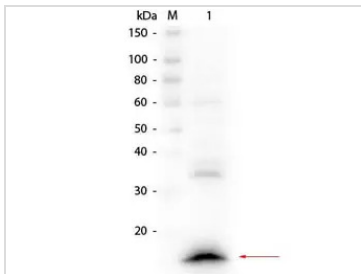
- Lane 1 : Marker
 - Lane 2 : Llama IgG1 protein
 - Lane 3 : Llama IgG2 protein
 - Lane 4 : Llama IgG3 protein
 - Lane 5 : VHH protein
- Loading : 50 ng
Dilution : 1:1000



GTX04578 WB Image

WB analysis of various samples using GTX04578 Rabbit anti-Llama VHH Single Domain antibody.

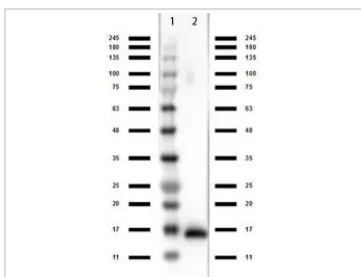
- Lane 1 : Marker
 - Lane 2 : VHH protein
 - Lane 3 : Llama IgG1 protein
 - Lane 4 : Llama IgG2 protein
 - Lane 5 : Llama IgG3 protein
- Loading : 50 ng
Dilution : 1:1000



GTX04578 WB Image

WB analysis of HeLa whole cell lysate spiked with VHH single domain using GTX04578 Rabbit anti-Llama VHH Single Domain antibody.

- Loading : 10 µg lysate with 25 ng VHH
- Dilution : 1:1000



GTX04578 WB Image

WB analysis of VHH protein using GTX04578 Rabbit anti-Llama VHH Single Domain antibody.

- Lane 1 : Marker
 - Lane 2 : VHH protein
- Loading : 0.5 µg
Dilution : 1 µg/mL



For full product information, images and publications, please visit our [website](#).