



# SZABO SCANDIC

Part of Europa Biosite

## Produktinformation



Forschungsprodukte & Biochemikalien



Zellkultur & Verbrauchsmaterial



Diagnostik & molekulare Diagnostik



Laborgeräte & Service

Weitere Information auf den folgenden Seiten!  
See the following pages for more information!



### Lieferung & Zahlungsart

siehe unsere [Liefer- und Versandbedingungen](#)

### Zuschläge

- Mindermengenzuschlag
- Trockeneiszuschlag
- Gefahrgutzuschlag
- Expressversand

### SZABO-SCANDIC HandelsgmbH

Quellenstraße 110, A-1100 Wien

T. +43(0)1 489 3961-0

F. +43(0)1 489 3961-7

[mail@szabo-scandic.com](mailto:mail@szabo-scandic.com)

[www.szabo-scandic.com](http://www.szabo-scandic.com)

[linkedin.com/company/szaboscandic](https://www.linkedin.com/company/szaboscandic) 

## Rabbit anti-Llama VHH Single Domain antibody

Cat. No. GTX04579

Host	Rabbit
Clonality	Polyclonal
Isotype	IgG
Application	WB, ELISA
Reactivity	Llama

Package  
100 µg

## APPLICATION

## Application Note

\*Optimal dilutions/concentrations should be determined by the researcher.

Suggested dilution	Recommended dilution
WB	1:1000-1:5000
ELISA	1:10000-1:50000

Not tested in other applications.

**Product Note** It detects recombinant VhH proteins, native Llama IgG2 and native Llama IgG3.

## PROPERTIES

Form	Liquid
Buffer	0.02 M Potassium Phosphate pH 7.2, 0.15 M NaCl
Preservative	0.01% Sodium azide
Storage	Store as concentrated solution. Centrifuge briefly prior to opening vial. For short-term storage (1-2 weeks), store at 4°C. For long-term storage, aliquot and store at -20°C or below. Avoid multiple freeze-thaw cycles.
Concentration	80 mg/ml (Please refer to the vial label for the specific concentration.)
Immunogen	A native VhH camelid domain protein
Purification	Purified IgG From serum
Conjugation	Unconjugated

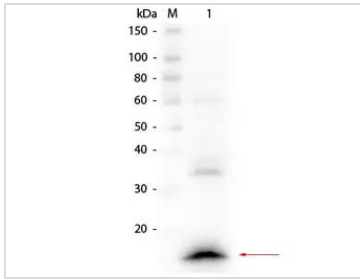
**Note** For laboratory research use only. Not for any clinical, therapeutic, or diagnostic use in humans or animals. Not for animal or human consumption.

Purchasers shall not, and agree not to enable third parties to, analyze, copy, reverse engineer or otherwise attempt to determine the structure or sequence of the product.



For full product information, images and publications, please visit our [website](#).

DATA IMAGES

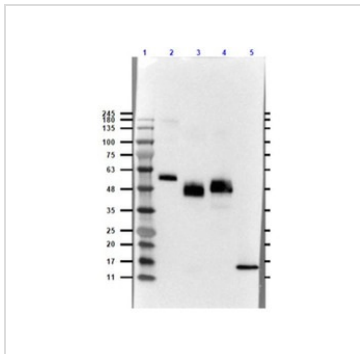


**GTX04579 WB Image**

WB analysis of HeLa whole cell lysate spiked with VHH single domain using GTX04579 Rabbit anti-Llama VHH Single Domain antibody.

Loading : 10  $\mu$ g lysate with 25 ng VHH

Dilution : 1:1000



**GTX04579 WB Image**

WB analysis of various samples using GTX04579 Rabbit anti-Llama VHH Single Domain antibody.

Lane 1 : Marker

Lane 2 : Llama IgG1 protein

Lane 3 : Llama IgG2 protein

Lane 4 : Llama IgG3 protein

Lane 5 : VHH protein

Loading : 50 ng

Dilution : 1:1000



For full product information, images and publications, please visit our [website](#).