



SZABO SCANDIC

Part of Europa Biosite

Produktinformation



Forschungsprodukte & Biochemikalien



Zellkultur & Verbrauchsmaterial



Diagnostik & molekulare Diagnostik



Laborgeräte & Service

Weitere Information auf den folgenden Seiten!
See the following pages for more information!



Lieferung & Zahlungsart

siehe unsere [Liefer- und Versandbedingungen](#)

Zuschläge

- Mindermengenzuschlag
- Trockeneiszuschlag
- Gefahrgutzuschlag
- Expressversand

SZABO-SCANDIC HandelsgmbH

Quellenstraße 110, A-1100 Wien

T. +43(0)1 489 3961-0

F. +43(0)1 489 3961-7

mail@szabo-scandic.com

www.szabo-scandic.com

[linkedin.com/company/szaboscandic](https://www.linkedin.com/company/szaboscandic) 

TMEM26 antibody

Cat. No. GTX04582

Host	Rabbit
Clonality	Polyclonal
Isotype	IgG
Application	WB, IHC-P
Reactivity	Human

Package
100 µl

APPLICATION

Application Note

*Optimal dilutions/concentrations should be determined by the researcher.

Suggested dilution	Recommended dilution
WB	Assay dependent
IHC-P	Assay dependent

Not tested in other applications.

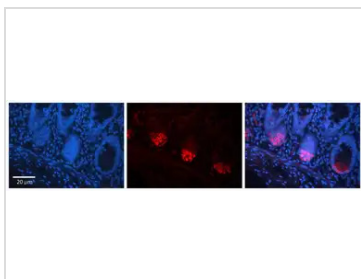
Calculated MW 42 kDa. ([Note](#))

PROPERTIES

Form	Liquid
Buffer	PBS, 2% sucrose
Preservative	0.09% sodium azide
Storage	Store as concentrated solution. Centrifuge briefly prior to opening vial. For short-term storage (1-2 weeks), store at 4°C. For long-term storage, aliquot and store at -20°C or below. Avoid multiple freeze-thaw cycles.
Concentration	0.5 mg/ml (Please refer to the vial label for the specific concentration.)
Immunogen	A synthetic peptide directed towards the C-terminal region of Human TMEM26 (RSQSEGLKGEHGCRAQTSESGPSQRDWQNESKEGLAIPLRGSPVTSDDSH)
Purification	Purified by affinity chromatography
Conjugation	Unconjugated
Note	For laboratory research use only. Not for any clinical, therapeutic, or diagnostic use in humans or animals. Not for animal or human consumption. Purchasers shall not, and agree not to enable third parties to, analyze, copy, reverse engineer or otherwise attempt to determine the structure or sequence of the product.



For full product information, images and publications, please visit our [website](#).

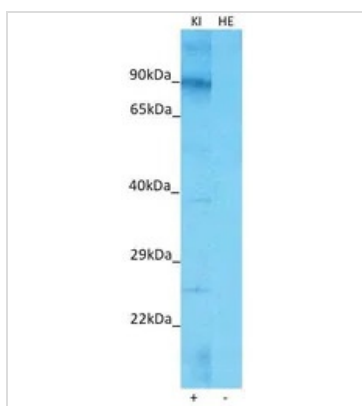
DATA IMAGES

GTX04582 IHC-P Image

IHC-P analysis of human colon tissue using GTX04582 TMEM26 antibody.

Red : Primary antibody

Blue : Nucleus

Dilution : 1:100


GTX04582 WB Image

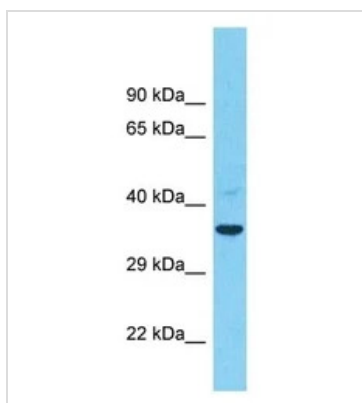
WB analysis of various samples using GTX04582 TMEM26 antibody.

KI : Human Kidney tissue lysate, a Positive control

HE : Human Fetal Heart tissue lysate, a Negative control

Loading : 25 μ g

Dilution : 1 μ g/mL


GTX04582 WB Image

WB analysis of COLO205 whole cell lysate using GTX04582 TMEM26 antibody.

Dilution : 1 μ g/mL



For full product information, images and publications, please visit our [website](#).