



# SZABO SCANDIC

Part of Europa Biosite

## Produktinformation



Forschungsprodukte & Biochemikalien



Zellkultur & Verbrauchsmaterial



Diagnostik & molekulare Diagnostik



Laborgeräte & Service

Weitere Information auf den folgenden Seiten!  
See the following pages for more information!



### Lieferung & Zahlungsart

siehe unsere [Liefer- und Versandbedingungen](#)

### Zuschläge

- Mindermengenzuschlag
- Trockeneiszuschlag
- Gefahrgutzuschlag
- Expressversand

### SZABO-SCANDIC HandelsgmbH

Quellenstraße 110, A-1100 Wien

T. +43(0)1 489 3961-0

F. +43(0)1 489 3961-7

[mail@szabo-scandic.com](mailto:mail@szabo-scandic.com)

[www.szabo-scandic.com](http://www.szabo-scandic.com)

[linkedin.com/company/szaboscandic](https://www.linkedin.com/company/szaboscandic) 

## RBPMS antibody

Cat No. GTX118619

Host	Rabbit
Clonality	Polyclonal
Isotype	IgG
Application	WB, ICC/IF, IHC-P, IHC-Fr, IHC-Wm, IHC
Reactivity	Human, Mouse, Rat, Monkey

Reference ( 15 )  
 Package  
 25 µl, 100 µl

## APPLICATION

## Application Note

\*Optimal dilutions/concentrations should be determined by the researcher.

Suggested dilution	Dilution
WB	1:500-1:3000
ICC/IF	1:100-1:1000
IHC-P	1:100-1:1000
IHC-Fr	Assay dependent
IHC-Wm	Assay dependent
IHC	Assay dependent

Not tested in other applications.

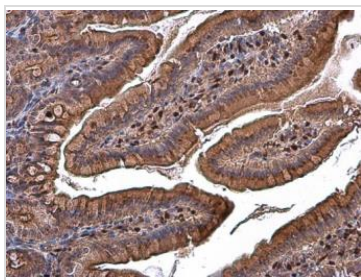
Calculated MW 22 kDa. ( [Note](#) )

## PROPERTIES

Form	Liquid
Buffer	1XPBS, 1% BSA, 20% Glycerol (pH7). 0.025% ProClin 300 was added as a preservative.
Storage	Store as concentrated solution. Centrifuge briefly prior to opening vial. For short-term storage (1-2 weeks), store at 4°C. For long-term storage, aliquot and store at -20°C or below. Avoid multiple freeze-thaw cycles.
Concentration	0.31 mg/ml (Please refer to the vial label for the specific concentration.)
Immunogen	Recombinant protein encompassing a sequence within the center region of human RBPMS. The exact sequence is proprietary.
Purification	Purified by antigen-affinity chromatography.
Conjugation	Unconjugated
Note	For laboratory use only. Not for any clinical, therapeutic, or diagnostic use in humans or animals. Not for animal or human consumption.



For full product information, images and publications, please visit our [website](#).

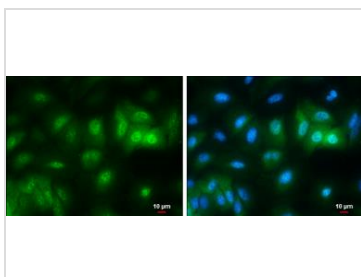
**DATA IMAGES**

**GTx118619 IHC-P Image**

RPMS antibody detects RPMS protein at cytoplasm and nucleus in rat duodenum by immunohistochemical analysis.

Sample: Paraffin-embedded rat duodenum.

RPMS antibody (GTx118619) diluted at 1:500.

Antigen Retrieval: Citrate buffer, pH 6.0, 15 min


**GTx118619 ICC/IF Image**

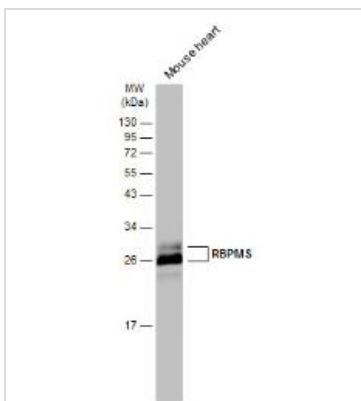
RPMS antibody detects RPMS protein at cytoplasm and nucleus by immunofluorescent analysis.

Sample: A549 cells were fixed in 4% paraformaldehyde at RT for 15 min.

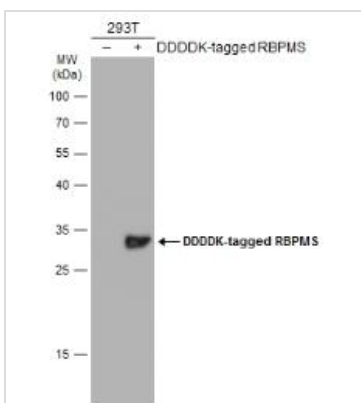
Green: RPMS protein stained by RPMS antibody (GTx118619) diluted at 1:500.

Blue: Hoechst 33342 staining.

Scale bar = 10  $\mu$ m.


**GTx118619 WB Image**

Mouse tissue extract (50  $\mu$ g) was separated by 12% SDS-PAGE, and the membrane was blotted with RPMS antibody (GTx118619) diluted at 1:3000. The HRP-conjugated anti-rabbit IgG antibody (GTx213110-01) was used to detect the primary antibody.


**GTx118619 WB Image**

Non-transfected (–) and transfected (+) 293T whole cell extracts (30  $\mu$ g) were separated by 12% SDS-PAGE, and the membrane was blotted with RPMS antibody (GTx118619) diluted at 1:1000. The HRP-conjugated anti-rabbit IgG antibody (GTx213110-01) was used to detect the primary antibody.



For full product information, images and publications, please visit our [website](https://www.genetex.com).