



SZABO SCANDIC

Part of Europa Biosite

Produktinformation



Forschungsprodukte & Biochemikalien



Zellkultur & Verbrauchsmaterial



Diagnostik & molekulare Diagnostik



Laborgeräte & Service

Weitere Information auf den folgenden Seiten!
See the following pages for more information!



Lieferung & Zahlungsart

siehe unsere [Liefer- und Versandbedingungen](#)

Zuschläge

- Mindermengenzuschlag
- Trockeneiszuschlag
- Gefahrgutzuschlag
- Expressversand

SZABO-SCANDIC Handels GmbH

Quellenstraße 110, A-1100 Wien

T. +43(0)1 489 3961-0

F. +43(0)1 489 3961-7

mail@szabo-scandic.com

www.szabo-scandic.com

[linkedin.com/company/szaboscandic](https://www.linkedin.com/company/szaboscandic) 

Dengue virus Envelope protein antibody

Cat No. GTX127277

Host	Rabbit
Clonality	Polyclonal
Isotype	IgG
Application	WB, ICC/IF, IHC-P
Reactivity	Dengue virus

Reference (13)
Package
25 µl, 100 µl

APPLICATION

Application Note

*Optimal dilutions/concentrations should be determined by the researcher.

Suggested dilution	Dilution
WB	1:5000-1:20000
ICC/IF	1:100-1:2000
IHC-P	1:100-1:1000

Not tested in other applications.

Calculated MW 54 kDa. ([Note](#))

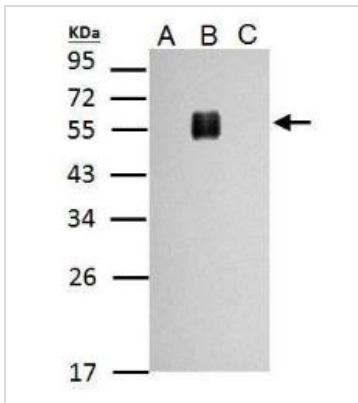
PROPERTIES

Form	Liquid
Buffer	1XPBS, 20% Glycerol (pH7). 0.025% ProClin 300 was added as a preservative.
Storage	Store as concentrated solution. Centrifuge briefly prior to opening vial. For short-term storage (1-2 weeks), store at 4°C. For long-term storage, aliquot and store at -20°C or below. Avoid multiple freeze-thaw cycles.
Concentration	0.52 mg/ml (Please refer to the vial label for the specific concentration.)
Immunogen	Recombinant protein encompassing a sequence within the center region of Dengue virus Envelope protein. The exact sequence is proprietary.
Purification	Purified by antigen-affinity chromatography.
Conjugation	Unconjugated
Note	For laboratory use only. Not for any clinical, therapeutic, or diagnostic use in humans or animals. Not for animal or human consumption.



For full product information, images and publications, please visit our [website](#).

DATA IMAGES



GTX127277 WB Image

Sample (20 µg of whole cell lysate)

A: BHK-21

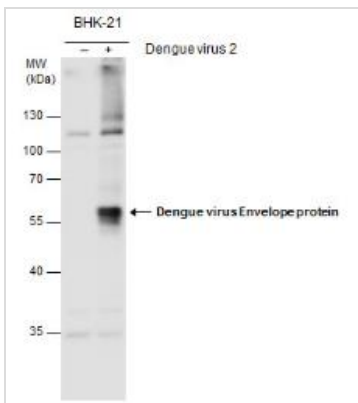
B: Dengue virus 2 infected BHK-21

C: JEV infected BHK-21

12% SDS PAGE

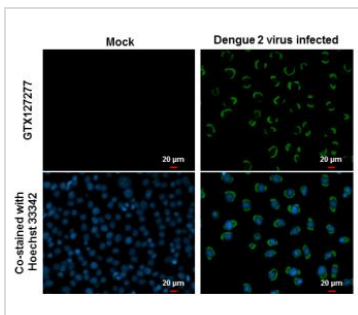
GTX127277 diluted at 1:10000

The HRP-conjugated anti-rabbit IgG antibody (GTX213110-01) was used to detect the primary antibody.



GTX127277 WB Image

Dengue virus Envelope protein antibody detects Dengue virus Envelope protein protein by western blot analysis. Un-infected (-) and infected (+, Dengue virus 2 infection) BHK-21 whole cell extracts (30 µg) were separated by 10% SDS-PAGE, and the membrane was blotted with Dengue virus Envelope protein antibody (GTX127277) at a dilution of 1:10000. The HRP-conjugated anti-rabbit IgG antibody (GTX213110-01) was used to detect the primary antibody.



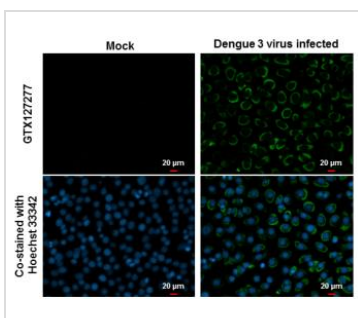
GTX127277 ICC/IF Image

Envelope protein (Dengue virus) antibody detects Envelope protein (Dengue virus) protein at cytoplasm by immunofluorescent analysis.

Samples: BHK-21 cells mock (left) and infected with Dengue virus 2 (right) were fixed in MeOH.

Green: Envelope protein (Dengue virus) protein stained by Envelope protein (Dengue virus) antibody (GTX127277) diluted at 1:2000.

Blue: Hoechst 33342 staining.



GTX127277 ICC/IF Image

Envelope protein (Dengue virus) antibody detects Envelope protein (Dengue virus) protein at cytoplasm by immunofluorescent analysis.

Samples: BHK-21 cells mock (left) and infected with Dengue virus 3 (right) were fixed in MeOH.

Green: Envelope protein (Dengue virus) protein stained by Envelope protein (Dengue virus) antibody (GTX127277) diluted at 1:2000.

Blue: Hoechst 33342 staining.



For full product information, images and publications, please visit our [website](http://www.genetex.com).