



SZABO SCANDIC

Part of Europa Biosite

Produktinformation



Forschungsprodukte & Biochemikalien



Zellkultur & Verbrauchsmaterial



Diagnostik & molekulare Diagnostik



Laborgeräte & Service

Weitere Information auf den folgenden Seiten!
See the following pages for more information!



Lieferung & Zahlungsart

siehe unsere [Liefer- und Versandbedingungen](#)

Zuschläge

- Mindermengenzuschlag
- Trockeneiszuschlag
- Gefahrgutzuschlag
- Expressversand

SZABO-SCANDIC HandelsgmbH

Quellenstraße 110, A-1100 Wien

T. +43(0)1 489 3961-0

F. +43(0)1 489 3961-7

mail@szabo-scandic.com

www.szabo-scandic.com

[linkedin.com/company/szaboscandic](https://www.linkedin.com/company/szaboscandic) 

BDNF antibody

Cat No. GTX132621

Host	Rabbit
Clonality	Polyclonal
Isotype	IgG
Application	WB, ICC/IF, IHC-P
Reactivity	Human, Mouse, Rat

Package

25 µl, 100 µl

APPLICATION

Application Note

*Optimal dilutions/concentrations should be determined by the researcher.

Suggested dilution	Dilution
WB	1:500-1:3000
ICC/IF	Assay dependent
IHC-P	1:100-1:1000

Not tested in other applications.

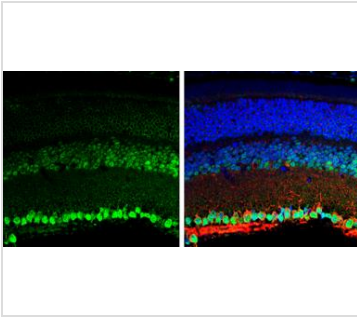
Calculated MW 28 kDa. ([Note](#))

PROPERTIES

Form	Liquid
Buffer	1XPBS, 20% Glycerol (pH7). 0.025% ProClin 300 was added as a preservative.
Storage	Store as concentrated solution. Centrifuge briefly prior to opening vial. For short-term storage (1-2 weeks), store at 4°C. For long-term storage, aliquot and store at -20°C or below. Avoid multiple freeze-thaw cycles.
Concentration	0.58 mg/ml (Please refer to the vial label for the specific concentration.)
Immunogen	Carrier-protein conjugated synthetic peptide encompassing a sequence within the center region of human BDNF. The exact sequence is proprietary.
Purification	Purified by antigen-affinity chromatography.
Conjugation	Unconjugated
Note	For laboratory use only. Not for any clinical, therapeutic, or diagnostic use in humans or animals. Not for animal or human consumption.



For full product information, images and publications, please visit our [website](#).

DATA IMAGES

GTX132621 IHC-P Image

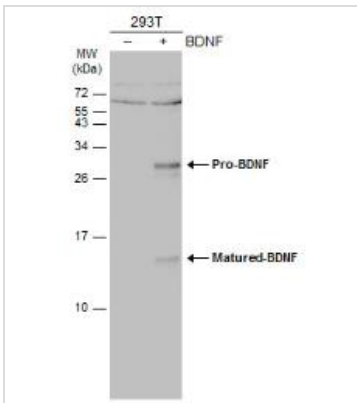
BDNF antibody detects BDNF protein expression by immunohistochemical analysis.

Sample: Paraffin-Embedded adult mouse retina.

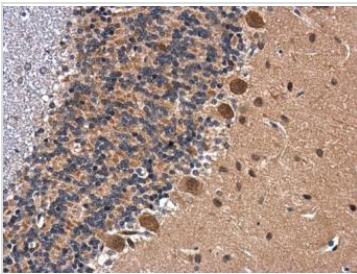
Green: BDNF protein stained by BDNF antibody (GTX132621) diluted at 1:250.

Red: beta Tubulin 3/ TUJ1, stained by beta Tubulin 3/ TUJ1 antibody [GT11710] (GTX631836) diluted at 1:500.

Blue: Fluoroshield with DAPI (GTX30920).


GTX132621 WB Image

Non-transfected (–) and transfected (+) 293T whole cell extracts (30 µg) were separated by 15% SDS-PAGE, and the membrane was blotted with BDNF antibody (GTX132621) diluted at 1:1000. The HRP-conjugated anti-rabbit IgG antibody (GTX213110-01) was used to detect the primary antibody.

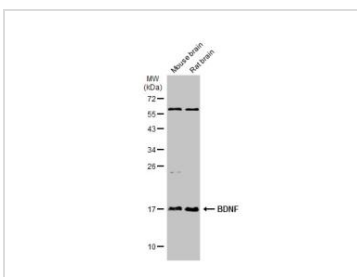

GTX132621 IHC-P Image

BDNF antibody detects BDNF protein at cytoplasm in rat brain by immunohistochemical analysis.

Sample: Paraffin-embedded rat brain.

BDNF antibody (GTX132621) diluted at 1:500.

Antigen Retrieval: Citrate buffer, pH 6.0, 15 min


GTX132621 WB Image

Various tissue extracts (50 µg) were separated by 12% SDS-PAGE, and the membrane was blotted with BDNF antibody (GTX132621) diluted at 1:500. The HRP-conjugated anti-rabbit IgG antibody (GTX213110-01) was used to detect the primary antibody.



For full product information, images and publications, please visit our [website](https://www.genetex.com).