



SZABO SCANDIC

Part of Europa Biosite

Produktinformation



Forschungsprodukte & Biochemikalien



Zellkultur & Verbrauchsmaterial



Diagnostik & molekulare Diagnostik



Laborgeräte & Service

Weitere Information auf den folgenden Seiten!
See the following pages for more information!



Lieferung & Zahlungsart

siehe unsere [Liefer- und Versandbedingungen](#)

Zuschläge

- Mindermengenzuschlag
- Trockeneiszuschlag
- Gefahrgutzuschlag
- Expressversand

SZABO-SCANDIC Handels GmbH

Quellenstraße 110, A-1100 Wien

T. +43(0)1 489 3961-0

F. +43(0)1 489 3961-7

mail@szabo-scandic.com

www.szabo-scandic.com

[linkedin.com/company/szaboscandic](https://www.linkedin.com/company/szaboscandic) 

SARS-CoV-2 (COVID-19) Spike RBD antibody

Cat No. GTX135709

Host	Rabbit
Clonality	Polyclonal
Isotype	IgG
Application	WB, ICC/IF, FACS, ELISA, Neutralizing/Inhibition, IHC-P (cell pellet)
Reactivity	SARS Coronavirus 2

Package
100 µl, 25 µl

APPLICATION

Application Note

*Optimal dilutions/concentrations should be determined by the researcher.

Suggested dilution	Dilution
WB	1:1000-1:10000
ICC/IF	Assay dependent
FACS	Assay dependent
ELISA	Assay dependent
Neutralizing/Inhibition	Assay dependent
IHC-P (cell pellet)	Assay dependent

Not tested in other applications.

Specificity/Sensitivity This antibody detects SARS-CoV-2 Spike protein, but does not cross-react with SARS-CoV or MERS-CoV spike proteins based on our internal testing.

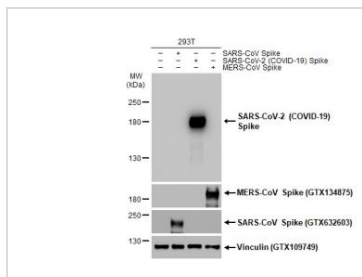
PROPERTIES

Form	Liquid
Buffer	1XPBS, 20% Glycerol (pH7). 0.025% ProClin 300
Storage	Store as concentrated solution. Centrifuge briefly prior to opening vial. For short-term storage (1-2 weeks), store at 4°C. For long-term storage, aliquot and store at -20°C or below. Avoid multiple freeze-thaw cycles.
Concentration	1 mg/ml (Please refer to the vial label for the specific concentration.)
Immunogen	Recombinant protein corresponding to SARS-CoV-2 (COVID-19) Spike RBD.
Purification	Purified by antigen-affinity chromatography
Conjugation	Unconjugated
Note	For laboratory use only. Not for any clinical, therapeutic, or diagnostic use in humans or animals. Not for animal or human consumption.

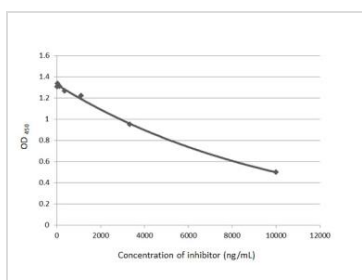


For full product information, images and publications, please visit our [website](#).

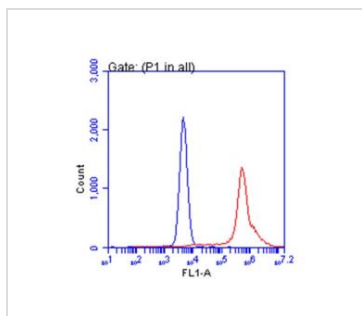
Date 2020 / 09 / 29 Page 1 of 2

DATA IMAGES

GTx135709 WB Image

Non-transfected (–) and transfected (+) 293T whole cell extracts (30 µg) were separated by 5% SDS-PAGE, and the membrane was blotted with SARS-CoV-2 (COVID-19) Spike RBD antibody (GTx135709) diluted at 1:5000. The HRP-conjugated anti-rabbit IgG antibody (GTx213110-01) was used to detect the primary antibody.


GTx135709 Neutralizing/Inhibition Image

Inhibition ELISA analysis. Immobilized recombinant SARS-CoV-2 (COVID-19) Spike S1 protein, His and Avi tag (active) (GTx01548-pro) (coated at 2 µg/mL) was bound to soluble recombinant Human ACE2 (ECD) protein, mouse IgG Fc tag (GTx135683-pro) (3000 ng/mL) with the presence of SARS-CoV-2 (COVID-19) Spike RBD antibody (GTx135709) (14-10000 ng/mL). The bound ACE2 protein was detected by the Goat Anti-Mouse IgG antibody (HRP) (GTx213111-01) (1:10000).


GTx135709 FACS Image

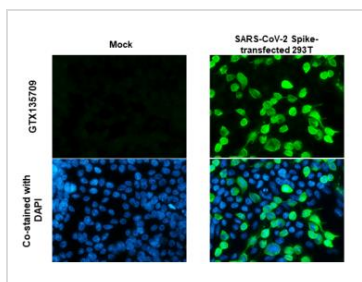
SARS-CoV-2 (COVID-19) Spike RBD antibody (GTx135709) detects SARS-CoV-2 (COVID-19) Spike RBD protein by flow cytometry analysis.

Sample: 293T cells transfected SARS-CoV-2 (2019-nCoV) Spike.

Blue: Unlabelled sample was used as a control.

Red: SARS-CoV-2 (COVID-19) Spike RBD antibody (GTx135709) dilution: 1:50.

Acquisition of 20,000 events were collected using a Dylight 488-conjugated secondary antibody for FACS analysis.

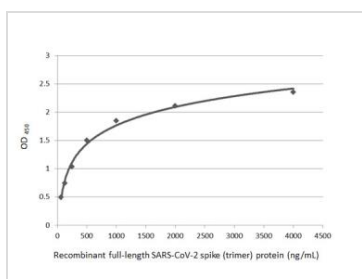

GTx135709 ICC/IF Image

SARS-CoV-2 (COVID-19) Spike RBD antibody detects SARS-CoV-2 (COVID-19) Spike RBD protein by immunofluorescent analysis.

Sample: Mock and transfected 293T cells were fixed in 4% paraformaldehyde at RT for 15 min.

Green: SARS-CoV-2 (COVID-19) Spike RBD stained by SARS-CoV-2 (COVID-19) Spike RBD antibody (GTx135709) diluted at 1:1000.

Blue: Fluoroshield with DAPI (GTx30920).


GTx135709 ELISA Image

Sandwich ELISA detection of recombinant full-length SARS-CoV-2 spike (trimer) protein using SARS-CoV / SARS-CoV-2 (COVID-19) spike antibody [1A9] (GTx632604) as capture antibody at concentration of 5 µg/mL and SARS-CoV-2 (COVID-19) Spike RBD antibody (GTx135709) as detection antibody at concentration of 1 µg/mL. Rabbit IgG antibody (HRP) (GTx213110-01) was diluted at 1:10000 and used to detect the primary antibody.



For full product information, images and publications, please visit our [website](https://www.genetex.com).