



# SZABO SCANDIC

Part of Europa Biosite

## Produktinformation



Forschungsprodukte & Biochemikalien



Zellkultur & Verbrauchsmaterial



Diagnostik & molekulare Diagnostik



Laborgeräte & Service

Weitere Information auf den folgenden Seiten!  
See the following pages for more information!



### Lieferung & Zahlungsart

siehe unsere [Liefer- und Versandbedingungen](#)

### Zuschläge

- Mindermengenzuschlag
- Trockeneiszuschlag
- Gefahrgutzuschlag
- Expressversand

### SZABO-SCANDIC HandelsgmbH

Quellenstraße 110, A-1100 Wien

T. +43(0)1 489 3961-0

F. +43(0)1 489 3961-7

[mail@szabo-scandic.com](mailto:mail@szabo-scandic.com)

[www.szabo-scandic.com](http://www.szabo-scandic.com)

[linkedin.com/company/szaboscandic](https://www.linkedin.com/company/szaboscandic) 

## Influenza B virus Nucleoprotein (B/Sydney/3/2004), DDDDK Tag

**Cat No. GTX135867-pro****Application** ELISA, Lateral Flow**Species** Influenza B virus

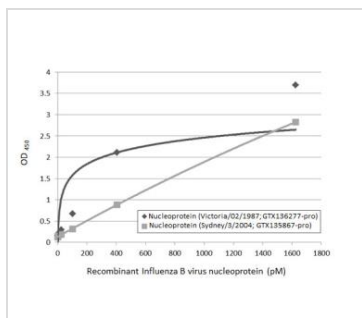
★★★★★ Review ( 1 )

Package  
100 µg

## PROPERTIES

**Form** Liquid**Buffer** PBS**Storage** Store as concentrated solution. Centrifuge briefly prior to opening vial. Aliquot and store at -20°C or below. Avoid multiple freeze-thaw cycles.**Region/Sequence** DDDDK tagged full length Nucleoprotein protein of Influenza B virus (B/Sydney/3/2004) (AGX16066)**Expression System** HEK293 cells**Purity** >90%**Conjugation** Unconjugated**Note** For laboratory use only. Not for any clinical, therapeutic, or diagnostic use in humans or animals. Not for animal or human consumption.

## DATA IMAGES

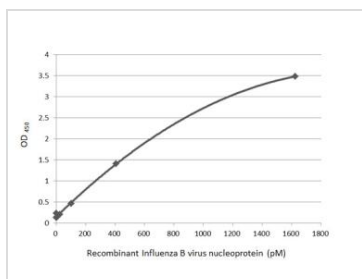
**GTX135867-pro ELISA Image**

Sandwich ELISA detection of recombinant nucleoproteins (NP) derived from different strains of Influenza B virus (i.e., B/Sydney/3/2004; B/Victoria/02/1987) using antibodies as below.

**Capture:** Influenza B virus Nucleoprotein antibody [HL1073] (GTX636194) (5 µg/mL)

**Detection:** HRP-conjugated Influenza B virus Nucleoprotein antibody [HL1068] (GTX636099) (1 µg/mL).

Please notice that GTX636099 needs to be conjugated to HRP to function as the detection antibody when paired with GTX636194. Please contact us for custom HRP-conjugated antibody.

**GTX135867-pro ELISA Image**

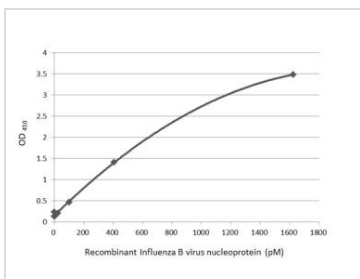
Sandwich ELISA detection of recombinant Influenza B virus Nucleoprotein (B/Sydney/3/2004), DDDDK Tag (GTX135867-pro) using antibodies as below.

**Capture:** Influenza B virus Nucleoprotein antibody (GTX128539) (5 µg/mL)

**Detection:** Influenza B virus Nucleoprotein antibody [GT371] (GTX629882) (1 µg/mL).



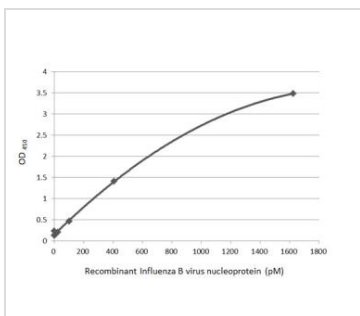
For full product information, images and publications, please visit our [website](#).


**GTX135867-pro ELISA Image**

Sandwich ELISA detection of recombinant Influenza B virus Nucleoprotein (B/Sydney/3/2004), DDDDK Tag (GTX135867-pro) using antibodies as below.

**Capture:** Influenza B virus Nucleoprotein antibody [GT382] (GTX629883) (5 µg/mL)

**Detection:** Influenza B virus Nucleoprotein antibody (GTX128539) (1 µg/mL).

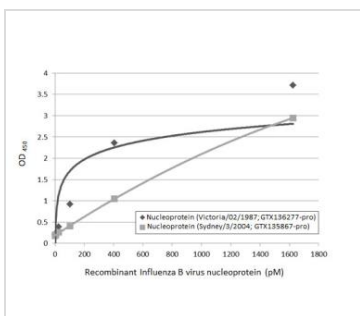

**GTX135867-pro ELISA Image**

Sandwich ELISA detection of recombinant Influenza B virus Nucleoprotein (B/Sydney/3/2004), DDDDK Tag (GTX135867-pro) using antibodies as below.

**Capture:** Influenza B virus Nucleoprotein antibody [HL1068] (GTX636099) (5 µg/mL)

**Detection:** HRP-conjugated Influenza B virus Nucleoprotein antibody [HL1069] (GTX636100) (1 µg/mL).

Please notice that GTX636100 needs to be conjugated to HRP to function as the detection antibody when paired with GTX636099. Please contact us for custom HRP-conjugated antibody.

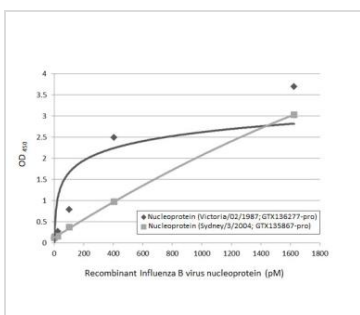

**GTX135867-pro ELISA Image**

Sandwich ELISA detection of recombinant nucleoproteins (NP) derived from different strains of Influenza B virus (i.e., B/Sydney/3/2004; B/Victoria/02/1987) using antibodies as below.

**Capture:** Influenza B virus Nucleoprotein antibody [HL1073] (GTX636194) (5 µg/mL)

**Detection:** HRP-conjugated Influenza B virus Nucleoprotein antibody [HL1069] (GTX636100) (1 µg/mL).

Please notice that GTX636100 needs to be conjugated to HRP to function as the detection antibody when paired with GTX636194. Please contact us for custom HRP-conjugated antibody.

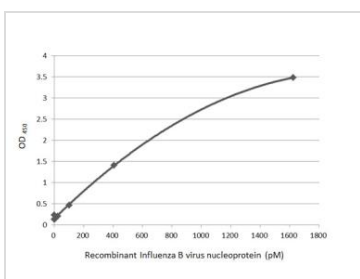

**GTX135867-pro ELISA Image**

Sandwich ELISA detection of recombinant nucleoproteins (NP) derived from different strains of Influenza B virus (i.e., B/Sydney/3/2004; B/Victoria/02/1987) using antibodies as below.

**Capture:** Influenza B virus Nucleoprotein antibody [HL1068] (GTX636099) (5 µg/mL)

**Detection:** HRP-conjugated Influenza B virus Nucleoprotein antibody [HL1069] (GTX636100) (1 µg/mL).

Please notice that GTX636100 needs to be conjugated to HRP to function as the detection antibody when paired with GTX636099. Please contact us for custom HRP-conjugated antibody.


**GTX135867-pro ELISA Image**

Sandwich ELISA detection of recombinant Influenza B virus Nucleoprotein (B/Sydney/3/2004), DDDDK Tag (GTX135867-pro) using antibodies as below.

**Capture:** Influenza B virus Nucleoprotein antibody [GT371] (GTX629882) (5 µg/mL)

**Detection:** Influenza B virus Nucleoprotein antibody (GTX128539) (1 µg/mL).



For full product information, images and publications, please visit our [website](#).