



SZABO SCANDIC

Part of Europa Biosite

Produktinformation



Forschungsprodukte & Biochemikalien



Zellkultur & Verbrauchsmaterial



Diagnostik & molekulare Diagnostik



Laborgeräte & Service

Weitere Information auf den folgenden Seiten!
See the following pages for more information!



Lieferung & Zahlungsart

siehe unsere [Liefer- und Versandbedingungen](#)

Zuschläge

- Mindermengenzuschlag
- Trockeneiszuschlag
- Gefahrgutzuschlag
- Expressversand

SZABO-SCANDIC HandelsgmbH

Quellenstraße 110, A-1100 Wien

T. +43(0)1 489 3961-0

F. +43(0)1 489 3961-7

mail@szabo-scandic.com

www.szabo-scandic.com

[linkedin.com/company/szaboscandic](https://www.linkedin.com/company/szaboscandic) 

Influenza A virus Nucleoprotein (A/Kansas/2017/H3N2), DDDDK Tag

Cat No. GTX135903-pro

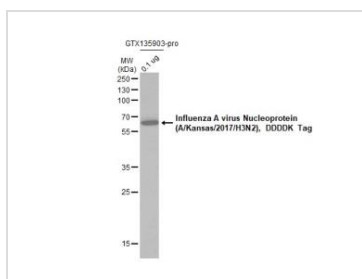
Application	ELISA
Species	Influenza A virus

Package
100 µg

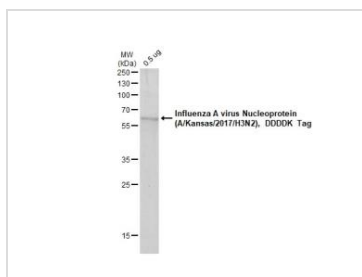
PROPERTIES

Form	Liquid
Buffer	PBS
Storage	Store as concentrated solution. Centrifuge briefly prior to opening vial. Aliquot and store at -20°C or below. Avoid multiple freeze-thaw cycles.
Concentration	batch dependent mg/ml (Please refer to the vial label for the specific concentration.)
Region/Sequence	C-terminal DDDDK tagged full length NP (nucleoprotein) of Influenza A virus (A/Kansas/2017/H3N2) (AVG71504.1)
Expression System	HEK293 cells
Purity	>90%
Conjugation	Unconjugated
Note	For laboratory use only. Not for any clinical, therapeutic, or diagnostic use in humans or animals. Not for animal or human consumption.

DATA IMAGES

**GTX135903-pro Image**

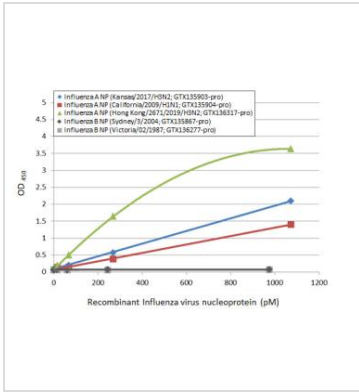
Influenza A virus Nucleoprotein (A/Kansas/2017/H3N2), DDDDK Tag protein (GTX135903-pro, 0.1 µg) was separated by 12% SDS-PAGE, and the membrane was blotted with tag antibody diluted at 1:10000.

**GTX135903-pro Image**

0.5 µg of GTX135903-pro Influenza A virus Nucleoprotein (A/Kansas/2017/H3N2), DDDDK Tag protein was analyzed using SDS-PAGE and stained with coomassie blue and captured by monochrome camera.



For full product information, images and publications, please visit our [website](#).



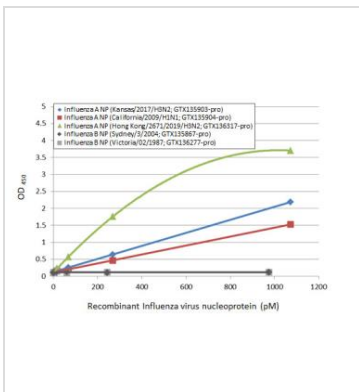
GTX135903-pro ELISA Image

Sandwich ELISA detection of recombinant nucleoproteins (NP) derived from different strains of Influenza A virus (i.e., A/Kansas/2017 (H3N2); A/California/2009 (H1N1); A/Hong Kong/2671/2019 (H3N2)) and Influenza B virus (i.e., B/Sydney/3/2004; B/Victoria/02/1987) using antibodies as below.

Capture: Influenza A virus NP (nucleoprotein) antibody [HL1103] (GTX636318) (5 µg/mL)

Detection: HRP-conjugated Influenza A virus NP (nucleoprotein) antibody [HL1078] (GTX636199) (1 µg/mL).

Please notice that GTX636199 needs to be conjugated to HRP to function as the detection antibody when paired with GTX636318. Please contact us for custom HRP-conjugated antibody.



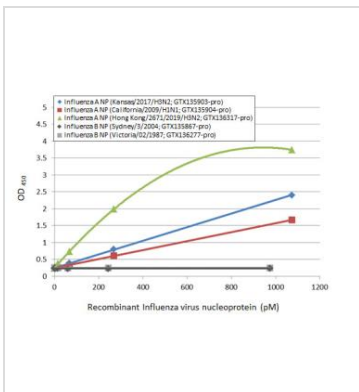
GTX135903-pro ELISA Image

Sandwich ELISA detection of recombinant nucleoproteins (NP) derived from different strains of Influenza A virus (i.e., A/Kansas/2017 (H3N2); A/California/2009 (H1N1); A/Hong Kong/2671/2019 (H3N2)) and Influenza B virus (i.e., B/Sydney/3/2004; B/Victoria/02/1987) using antibodies as below.

Capture: Influenza A virus NP (nucleoprotein) antibody [HL1078] (GTX636199) (5 µg/mL)

Detection: HRP-conjugated Influenza A virus NP (nucleoprotein) antibody [HL1103] (GTX636318) (1 µg/mL).

Please notice that GTX636318 needs to be conjugated to HRP to function as the detection antibody when paired with GTX636199. Please contact us for custom HRP-conjugated antibody.



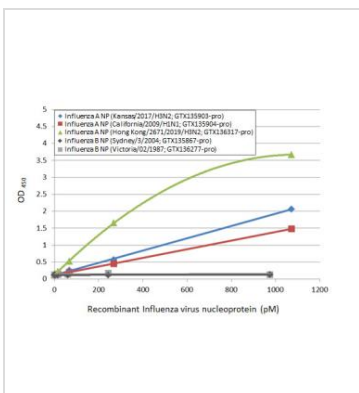
GTX135903-pro ELISA Image

Sandwich ELISA detection of recombinant nucleoproteins (NP) derived from different strains of Influenza A virus (i.e., A/Kansas/2017 (H3N2); A/California/2009 (H1N1); A/Hong Kong/2671/2019 (H3N2)) and Influenza B virus (i.e., B/Sydney/3/2004; B/Victoria/02/1987) using antibodies as below.

Capture: Influenza A virus NP (nucleoprotein) antibody [HL1103] (GTX636318) (5 µg/mL)

Detection: HRP-conjugated Influenza A virus NP (nucleoprotein) antibody [HL1089] (GTX636247) (1 µg/mL).

Please notice that GTX636247 needs to be conjugated to HRP to function as the detection antibody when paired with GTX636318. Please contact us for custom HRP-conjugated antibody.



GTX135903-pro ELISA Image

Sandwich ELISA detection of recombinant nucleoproteins (NP) derived from different strains of Influenza A virus (i.e., A/Kansas/2017 (H3N2); A/California/2009 (H1N1); A/Hong Kong/2671/2019 (H3N2)) and Influenza B virus (i.e., B/Sydney/3/2004; B/Victoria/02/1987) using antibodies as below.

Capture: Influenza A virus NP (nucleoprotein) antibody [HL1089] (GTX636247) (5 µg/mL)

Detection: HRP-conjugated Influenza A virus NP (nucleoprotein) antibody [HL1103] (GTX636318) (1 µg/mL).

Please notice that GTX636318 needs to be conjugated to HRP to function as the detection antibody when paired with GTX636247. Please contact us for custom HRP-conjugated antibody.



For full product information, images and publications, please visit our [website](#).