



# SZABO SCANDIC

Part of Europa Biosite

## Produktinformation



Forschungsprodukte & Biochemikalien



Zellkultur & Verbrauchsmaterial



Diagnostik & molekulare Diagnostik



Laborgeräte & Service

Weitere Information auf den folgenden Seiten!  
See the following pages for more information!



### Lieferung & Zahlungsart

siehe unsere [Liefer- und Versandbedingungen](#)

### Zuschläge

- Mindermengenzuschlag
- Trockeneiszuschlag
- Gefahrgutzuschlag
- Expressversand

### SZABO-SCANDIC HandelsgmbH

Quellenstraße 110, A-1100 Wien

T. +43(0)1 489 3961-0

F. +43(0)1 489 3961-7

[mail@szabo-scandic.com](mailto:mail@szabo-scandic.com)

[www.szabo-scandic.com](http://www.szabo-scandic.com)

[linkedin.com/company/szaboscandic](https://www.linkedin.com/company/szaboscandic) 

# SARS-CoV-2 (COVID-19) Spike ( L18F,..., K417N, E484K, N501Y,...)(ECD) Protein, His tag (active)

**Cat No. GTX136061-pro**

<b>Application</b>	Functional Assay
<b>Species</b>	SARS Coronavirus 2

**Package**  
100 µg

## APPLICATION

### Application Note

\*Optimal dilutions/concentrations should be determined by the researcher.

Suggested dilution	Dilution
Functional Assay	Assay dependent

Not tested in other applications.

### Product Note

These mutations (L18F, D80A, D215G, R246I, K417N, E484K, N501Y, D614G, A701V) are found in the spike S1 of the SARS-CoV-2 South Africa variant (501Y.V2 / B.1.351).

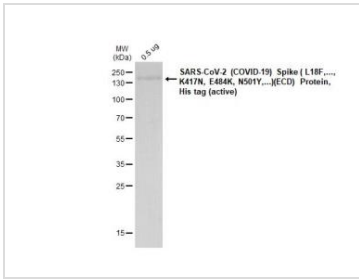
## PROPERTIES

<b>Form</b>	Liquid
<b>Buffer</b>	PBS
<b>Storage</b>	Store as concentrated solution. Centrifuge briefly prior to opening vial. Aliquot and store at -20°C or below. Avoid multiple freeze-thaw cycles.
<b>Concentration</b>	batch dependent (Please refer to the vial label for the specific concentration.)
<b>Region/Sequence</b>	SARS-CoV-2 Spike of QHD43416.1 (1-1213 a.a, extracellular domain) with South Africa variant (501Y.V2 / B.1.351) mutations (L18F, D80A, D215G, R246I, K417N, E484K, N501Y, D614G, A701V), S1-S2 cleavage site mutations (682-685GSAS), 6 stabilizing (HexaPro) mutations (F817P, A892P, A899P, A942P, K986P, V987P), and His tag at the C-terminus.
<b>Expression System</b>	HEK293 cells
<b>Purity</b>	>95%
<b>Conjugation</b>	Unconjugated
<b>Note</b>	For <i>In vitro</i> laboratory use only. Not for any clinical, therapeutic, or diagnostic use in humans or animals. Not for animal or human consumption.



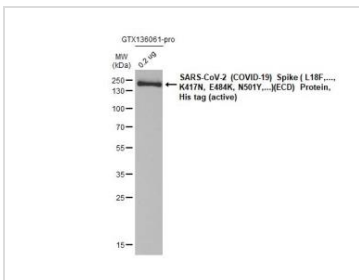
For full product information, images and publications, please visit our [website](#).

DATA IMAGES



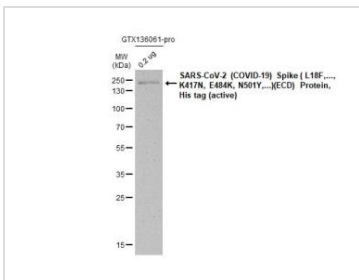
**GTX136061-pro Image**

0.5 µg of GTX136061-pro SARS-CoV-2 (COVID-19) Spike ( L18F,..., K417N, E484K, N501Y,...)(ECD) Protein, His tag (active) protein was analyzed using SDS-PAGE and stained with coomassie blue and captured by monochrome camera.



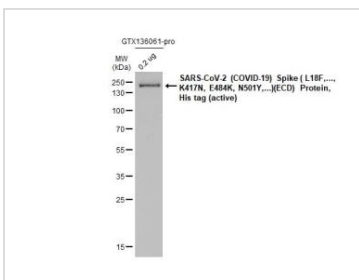
**GTX136061-pro Image**

SARS-CoV-2 (COVID-19) Spike ( L18F,..., K417N, E484K, N501Y,...)(ECD) Protein, His tag (active) (GTX136061-pro, 0.2 µg) was separated by 12% SDS-PAGE, and the membrane was blotted with SARS-CoV / SARS-CoV-2 (COVID-19) spike antibody [1A9] (GTX632604) diluted at 1:5000. The HRP-conjugated anti-mouse IgG antibody (GTX213111-01) was used to detect the primary antibody.



**GTX136061-pro Image**

SARS-CoV-2 (COVID-19) Spike ( L18F,..., K417N, E484K, N501Y,...)(ECD) Protein, His tag (active) (GTX136061-pro, 0.2 µg) was separated by 12% SDS-PAGE, and the membrane was blotted with SARS-CoV-2 (COVID-19) Spike S2 antibody [HL1038] (GTX635910) diluted at 1:150000. The HRP-conjugated anti-rabbit IgG antibody (GTX213110-01) was used to detect the primary antibody.



**GTX136061-pro Image**

SARS-CoV-2 (COVID-19) Spike ( L18F,..., K417N, E484K, N501Y,...)(ECD) Protein, His tag (active) (GTX136061-pro, 0.2 µg) was separated by 12% SDS-PAGE, and the membrane was blotted with SARS-CoV-2 (COVID-19) Spike S2 / S2' antibody [HL1039] (GTX635911) diluted at 1:140000. The HRP-conjugated anti-rabbit IgG antibody (GTX213110-01) was used to detect the primary antibody.



For full product information, images and publications, please visit our [website](#).