



# SZABO SCANDIC

Part of Europa Biosite

## Produktinformation



Forschungsprodukte & Biochemikalien



Zellkultur & Verbrauchsmaterial



Diagnostik & molekulare Diagnostik



Laborgeräte & Service

Weitere Information auf den folgenden Seiten!  
See the following pages for more information!



### Lieferung & Zahlungsart

siehe unsere [Liefer- und Versandbedingungen](#)

### Zuschläge

- Mindermengenzuschlag
- Trockeneiszuschlag
- Gefahrgutzuschlag
- Expressversand

### SZABO-SCANDIC HandelsgmbH

Quellenstraße 110, A-1100 Wien

T. +43(0)1 489 3961-0

F. +43(0)1 489 3961-7

[mail@szabo-scandic.com](mailto:mail@szabo-scandic.com)

[www.szabo-scandic.com](http://www.szabo-scandic.com)

[linkedin.com/company/szaboscandic](https://www.linkedin.com/company/szaboscandic) 

## SARS-CoV-2 (COVID-19) Spike RBD protein, His tag (active)

## Cat No. GTX136090-pro

<b>Application</b>	ELISA, Functional Assay
<b>Species</b>	SARS Coronavirus 2

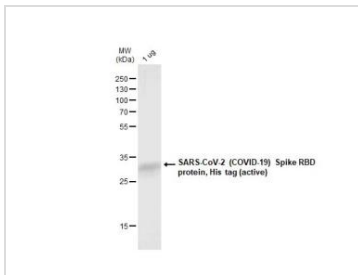
Package

100 µg

## PROPERTIES

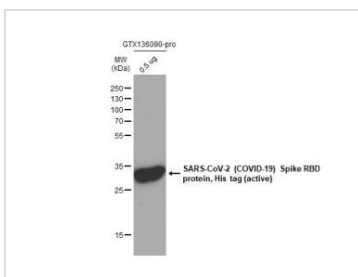
<b>Form</b>	Lyophilized powder
<b>Buffer</b>	Lyophilized from PBS buffer. Reconstitute with distilled water.
<b>Storage</b>	Store at 4°C or below. After reconstitution, keep as concentrated solution. For short-term storage (1-2 weeks), store at 4°C. For long-term storage, aliquot and store at -20°C or below. Avoid multiple freeze-thaw cycles.
<b>Region/Sequence</b>	SARS-CoV-2 Spike RBD of QHD43416.1 (319-541 a.a) and His tag at the C-terminus
<b>Expression System</b>	HEK293 cells
<b>Purity</b>	>95%
<b>Conjugation</b>	Unconjugated
<b>Note</b>	For laboratory use only. Not for any clinical, therapeutic, or diagnostic use in humans or animals. Not for animal or human consumption.

## DATA IMAGES



## GTX136090-pro Image

1 µg of GTX136090-pro SARS-CoV-2 (COVID-19) Spike RBD protein, His tag (active) protein was analyzed using SDS-PAGE and stained with coomassie blue and captured by monochrome camera.

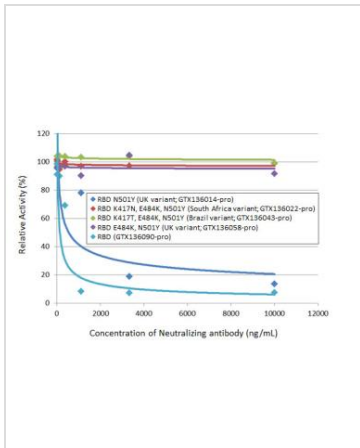


## GTX136090-pro Image

SARS-CoV-2 (COVID-19) Spike RBD protein, His tag (active) protein (GTX136090-pro, 0.5 µg) was separated by 12% SDS-PAGE, and the membrane was blotted with the SARS-CoV-2 (COVID-19) Spike RBD antibody [HL257] (GTX635692) diluted at 1:5000.

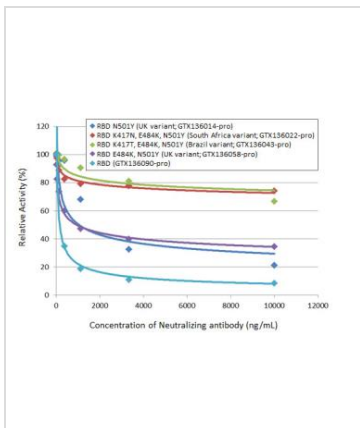


For full product information, images and publications, please visit our [website](#).



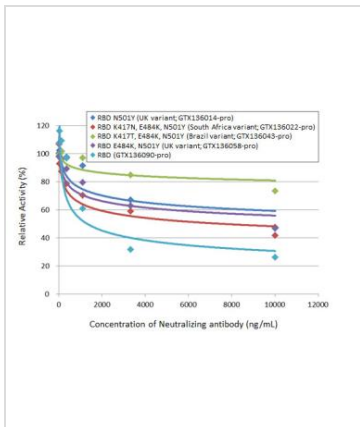
**GTX136090-pro Functional Assay Image**

Inhibition analysis of immobilized recombinant SARS-CoV-2 (COVID-19) Spike RBD (N501Y Mutant) protein, His tag (active) (UK variant) (GTX136014-pro), SARS-CoV-2 (COVID-19) Spike RBD (K417N, E484K, N501Y Mutant) protein, His tag (active) (South Africa variant) (GTX136022-pro), SARS-CoV-2 (COVID-19) Spike RBD (K417T, E484K, N501Y Mutant) protein, His tag (active) (Brazil variant) (GTX136043-pro), SARS-CoV-2 (COVID-19) Spike RBD (E484K, N501Y Mutant) protein, His tag (active) (UK variant) (GTX136058-pro) and SARS-CoV-2 (COVID-19) Spike RBD protein, His tag (active) (GTX136090-pro) (coated at 2 µg/mL) binding to soluble recombinant Human ACE2 (ECD) protein, mouse IgG Fc tag (active) (GTX135683-pro) (1000 ng/mL). ACE2 binding was inhibited by increasing concentrations of SARS-CoV-2 (COVID-19) Spike RBD antibody [HL1003] (GTX635792) (14-10000 ng/mL). Bound ACE2 was detected by Goat Anti-Mouse IgG antibody (HRP) (GTX213111-01) (1:10000).



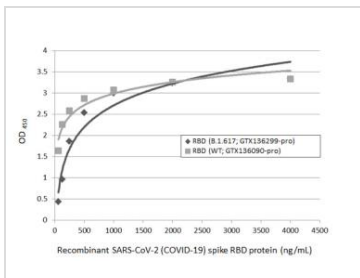
**GTX136090-pro Functional Assay Image**

Inhibition analysis of immobilized recombinant SARS-CoV-2 (COVID-19) Spike RBD (N501Y Mutant) protein, His tag (active) (UK variant) (GTX136014-pro), SARS-CoV-2 (COVID-19) Spike RBD (K417N, E484K, N501Y Mutant) protein, His tag (active) (South Africa variant) (GTX136022-pro), SARS-CoV-2 (COVID-19) Spike RBD (K417T, E484K, N501Y Mutant) protein, His tag (active) (Brazil variant) (GTX136043-pro), SARS-CoV-2 (COVID-19) Spike RBD (E484K, N501Y Mutant) protein, His tag (active) (UK variant) (GTX136058-pro) and SARS-CoV-2 (COVID-19) Spike RBD protein, His tag (active) (GTX136090-pro) (coated at 2 µg/mL) binding to soluble recombinant Human ACE2 (ECD) protein, mouse IgG Fc tag (active) (GTX135683-pro) (1000 ng/mL). ACE2 binding was inhibited by increasing concentrations of SARS-CoV-2 (COVID-19) Spike RBD antibody [HL1004] (GTX635793) (14-10000 ng/mL). Bound ACE2 was detected by Goat Anti-Mouse IgG antibody (HRP) (GTX213111-01) (1:10000).



**GTX136090-pro Functional Assay Image**

Inhibition analysis of immobilized recombinant SARS-CoV-2 (COVID-19) Spike RBD (N501Y Mutant) protein, His tag (active) (UK variant) (GTX136014-pro), SARS-CoV-2 (COVID-19) Spike RBD (K417N, E484K, N501Y Mutant) protein, His tag (active) (South Africa variant) (GTX136022-pro), SARS-CoV-2 (COVID-19) Spike RBD (K417T, E484K, N501Y Mutant) protein, His tag (active) (Brazil variant) (GTX136043-pro), SARS-CoV-2 (COVID-19) Spike RBD (E484K, N501Y Mutant) protein, His tag (active) (UK variant) (GTX136058-pro) and SARS-CoV-2 (COVID-19) Spike RBD protein, His tag (active) (GTX136090-pro) (coated at 2 µg/mL) binding to soluble recombinant Human ACE2 (ECD) protein, mouse IgG Fc tag (active) (GTX135683-pro) (1000 ng/mL). ACE2 binding was inhibited by increasing concentrations of SARS-CoV-2 (COVID-19) Spike RBD antibody (GTX135709) (13.72-10000 ng/mL). Bound ACE2 was detected by Goat Anti-Mouse IgG antibody (HRP) (GTX213111-01) (1:10000).



**GTX136090-pro ELISA Image**

Indirect ELISA analysis performed by coating plate with recombinant SARS-CoV-2 (COVID-19) Spike RBD (L452R, E484Q Mutant) protein, His tag (active) (Indian variant) (GTX136299-pro) and SARS-CoV-2 (COVID-19) Spike RBD protein, His tag (active) (Wild type) (GTX136090-pro) (4000-62.5 ng/mL). Coated protein was probed with SARS-CoV-2 (COVID-19) Spike RBD antibody [HL1004] (GTX635793) (1 µg/mL). Rabbit IgG antibody (HRP) (GTX213110-01) (1:10000) was used to detect bound primary antibody.



For full product information, images and publications, please visit our [website](#).