



# SZABO SCANDIC

Part of Europa Biosite

## Produktinformation



Forschungsprodukte & Biochemikalien



Zellkultur & Verbrauchsmaterial



Diagnostik & molekulare Diagnostik



Laborgeräte & Service

Weitere Information auf den folgenden Seiten!  
See the following pages for more information!



### Lieferung & Zahlungsart

siehe unsere [Liefer- und Versandbedingungen](#)

### Zuschläge

- Mindermengenzuschlag
- Trockeneiszuschlag
- Gefahrgutzuschlag
- Expressversand

### SZABO-SCANDIC HandelsgmbH

Quellenstraße 110, A-1100 Wien

T. +43(0)1 489 3961-0

F. +43(0)1 489 3961-7

[mail@szabo-scandic.com](mailto:mail@szabo-scandic.com)

[www.szabo-scandic.com](http://www.szabo-scandic.com)

[linkedin.com/company/szaboscandic](https://www.linkedin.com/company/szaboscandic) 

# SARS-CoV-2 (COVID-19) Spike S1 (L18F, D80A,..., R246I, K417N, E484K, N501Y, D614G), His tag (active)

**Cat No. GTX136095-pro**

**Species** SARS Coronavirus 2

**Package**

100 µg

## APPLICATION

### Product Note

These mutations (L18F, D80A, D215G, R246I, K417N, E484K, N501Y, D614G) are found in the spike S1 of the SARS-CoV-2 South Africa variant (501Y.V2 / B.1.351).

## PROPERTIES

**Form** Liquid

**Buffer** PBS

**Storage** Store as concentrated solution. Centrifuge briefly prior to opening vial. Aliquot and store at -20°C or below. Avoid multiple freeze-thaw cycles.

**Concentration** Batch dependent (Please refer to the vial label for the specific concentration.)

**Region/Sequence** SARS-CoV-2 Spike S1 of QHD43416.1 (1-685 a.a) with mutations ( L18F, D80A, D215G, R246I, K417N, E484K, N501Y, D614G) and His tag at the C-terminus

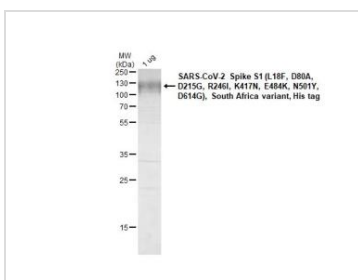
**Expression System** HEK293 cells

**Purity** >95%

**Conjugation** Unconjugated

**Note** For *In vitro* laboratory use only. Not for any clinical, therapeutic, or diagnostic use in humans or animals. Not for animal or human consumption.

## DATA IMAGES

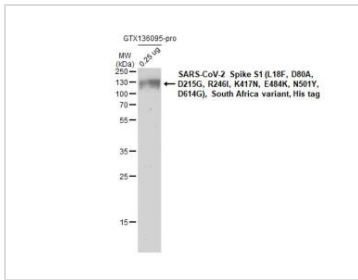


### GTX136095-pro Image

1 µg of GTX136095-pro SARS-CoV-2 Spike S1 (L18F, D80A, D215G, R246I, K417N, E484K, N501Y, D614G), South Africa variant, His tag protein was analyzed using SDS-PAGE and stained with coomassie blue and captured by monochrome camera.



For full product information, images and publications, please visit our [website](https://www.genetex.com).


**GTX136095-pro Image**

SARS-CoV-2 Spike S1 (L18F, D80A, D215G, R246I, K417N, E484K, N501Y, D614G), South Africa variant, His tag protein (GTX136095-pro, 0.5 µg) was separated by 12% SDS-PAGE, and the membrane was blotted with the SARS-CoV-2 (COVID-19) Spike RBD antibody [HL257] (GTX635692) diluted at 1:5000.



For full product information, images and publications, please visit our [website](#).