



SZABO SCANDIC

Part of Europa Biosite

Produktinformation



Forschungsprodukte & Biochemikalien



Zellkultur & Verbrauchsmaterial



Diagnostik & molekulare Diagnostik



Laborgeräte & Service

Weitere Information auf den folgenden Seiten!
See the following pages for more information!



Lieferung & Zahlungsart

siehe unsere [Liefer- und Versandbedingungen](#)

Zuschläge

- Mindermengenzuschlag
- Trockeneiszuschlag
- Gefahrgutzuschlag
- Expressversand

SZABO-SCANDIC HandelsgmbH

Quellenstraße 110, A-1100 Wien

T. +43(0)1 489 3961-0

F. +43(0)1 489 3961-7

mail@szabo-scandic.com

www.szabo-scandic.com

[linkedin.com/company/szaboscandic](https://www.linkedin.com/company/szaboscandic) 

Influenza B virus Nucleoprotein (B/Victoria/02/1987), DDDDK Tag

Cat No. GTX136277-pro

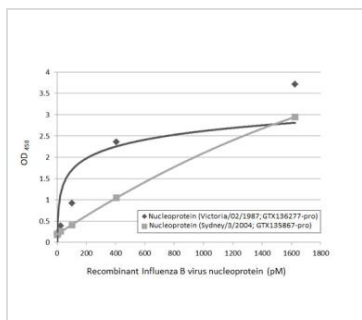
Application	ELISA
Species	Influenza B virus

Package
100 µg

PROPERTIES

Form	Liquid
Buffer	PBS
Storage	Store as concentrated solution. Centrifuge briefly prior to opening vial. Aliquot and store at -20°C or below. Avoid multiple freeze-thaw cycles.
Region/Sequence	DDDDK tagged full length Nucleoprotein protein of Influenza B virus (B/Victoria/02/1987)(ABL77249.1)
Expression System	HEK293 cells
Purity	>90%
Conjugation	Unconjugated
Note	For laboratory use only. Not for any clinical, therapeutic, or diagnostic use in humans or animals. Not for animal or human consumption.

DATA IMAGES

**GTX136277-pro ELISA Image**

Sandwich ELISA detection of recombinant nucleoproteins (NP) derived from different strains of Influenza B virus (i.e., B/Sydney/3/2004; B/Victoria/02/1987) using antibodies as below.

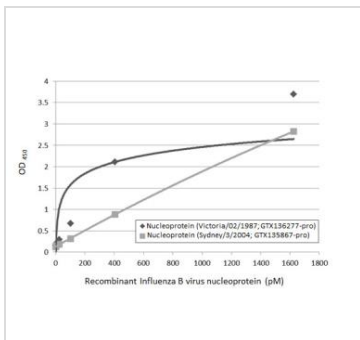
Capture: Influenza B virus Nucleoprotein antibody [HL1073] (GTX636194) (5 µg/mL)

Detection: HRP-conjugated Influenza B virus Nucleoprotein antibody [HL1069] (GTX636100) (1 µg/mL).

Please notice that GTX636100 needs to be conjugated to HRP to function as the detection antibody when paired with GTX636194. Please contact us for custom HRP-conjugated antibody.



For full product information, images and publications, please visit our [website](#).

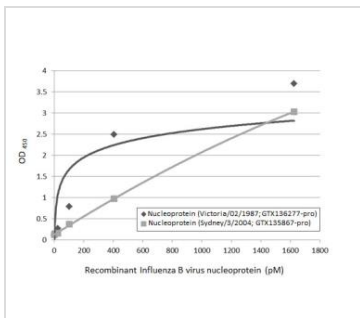

GTX136277-pro ELISA Image

Sandwich ELISA detection of recombinant nucleoproteins (NP) derived from different strains of Influenza B virus (i.e., B/Sydney/3/2004; B/Victoria/02/1987) using antibodies as below.

Capture: Influenza B virus Nucleoprotein antibody [HL1073] (GTX636194) (5 µg/mL)

Detection: HRP-conjugated Influenza B virus Nucleoprotein antibody [HL1068] (GTX636099) (1 µg/mL).

Please notice that GTX636099 needs to be conjugated to HRP to function as the detection antibody when paired with GTX636194. Please contact us for custom HRP-conjugated antibody.


GTX136277-pro ELISA Image

Sandwich ELISA detection of recombinant nucleoproteins (NP) derived from different strains of Influenza B virus (i.e., B/Sydney/3/2004; B/Victoria/02/1987) using antibodies as below.

Capture: Influenza B virus Nucleoprotein antibody [HL1068] (GTX636099) (5 µg/mL)

Detection: HRP-conjugated Influenza B virus Nucleoprotein antibody [HL1069] (GTX636100) (1 µg/mL).

Please notice that GTX636100 needs to be conjugated to HRP to function as the detection antibody when paired with GTX636099. Please contact us for custom HRP-conjugated antibody.



For full product information, images and publications, please visit our [website](#).