



SZABO SCANDIC

Part of Europa Biosite

Produktinformation



Forschungsprodukte & Biochemikalien



Zellkultur & Verbrauchsmaterial



Diagnostik & molekulare Diagnostik



Laborgeräte & Service

Weitere Information auf den folgenden Seiten!
See the following pages for more information!



Lieferung & Zahlungsart

siehe unsere [Liefer- und Versandbedingungen](#)

Zuschläge

- Mindermengenzuschlag
- Trockeneiszuschlag
- Gefahrgutzuschlag
- Expressversand

SZABO-SCANDIC Handels GmbH

Quellenstraße 110, A-1100 Wien

T. +43(0)1 489 3961-0

F. +43(0)1 489 3961-7

mail@szabo-scandic.com

www.szabo-scandic.com

[linkedin.com/company/szaboscandic](https://www.linkedin.com/company/szaboscandic)



Human G-CSF protein (active)

Cat. No. GTX138166-pro

Application	ELISA, Functional Assay
Species	Human

Package
100 µg

PRODUCT

Summary

G-CSF (Granulocyte-colony stimulating factor/CSF3) is the major growth factor driving the generation of mature granulocytes from committed bone marrow myeloid progenitors. This biologically active recombinant human G-CSF is an 18.7 kDa globular protein formed by a 174-amino acid polypeptide with two intramolecular disulfide bonds. Human and murine G-CSFs are highly similar and show reciprocal biological cross-reactivity.

APPLICATION

Application Note

Recommended antibody pairs for sandwich ELISA:
Capture: GTX641067 or Detection: GTX641068

Observed MW 15 kDa.

PROPERTIES

Form	Lyophilized powder
Buffer	Reconstitute with ddH ₂ O to 0.1 mg/ml. Lyophilized from 50mM PBS (pH7.4), 200mM NaCl, 5% Trehalose.
Preservative	No preservative
Storage	Store at 4°C or below. After reconstitution, keep as concentrated solution. Aliquot and store at -20°C or below. Avoid multiple freeze-thaw cycles. For long-term storage after reconstitution, aliquot and store at -70°C or below. Do not vortex.
Region/Sequence	Human full-length G-CSF protein (31-204 a.a. of NP_757373.1, signal peptide removed)
Expression System	E. Coli
Purity	>98%
Endotoxin	< 1 EU/ug
Conjugation	Unconjugated

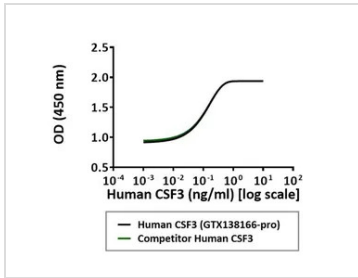
Note

For laboratory research use only. Not for any clinical, therapeutic, or diagnostic use in humans or animals. Not for animal or human consumption.

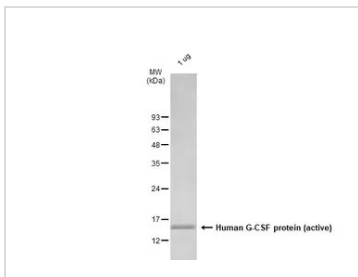
Purchasers shall not, and agree not to enable third parties to, analyze, copy, reverse engineer or otherwise attempt to determine the structure or sequence of the product.



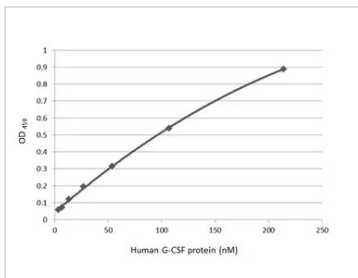
For full product information, images and publications, please visit our [website](#).

DATA IMAGES

GTX138166-pro Functional Assay Image

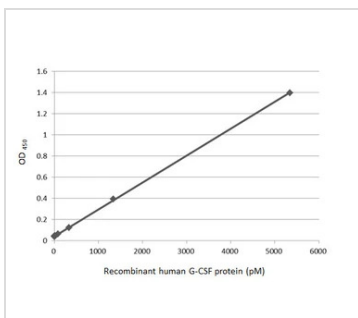
Serial dilutions of Human G-CSF protein (active) were added to murine NFS-60 cells. Cell proliferation was measured and the linear portion of the curve was used to calculate the ED50.


GTX138166-pro Image

1 µg of GTX138166-pro Human G-CSF protein (active) was analyzed using SDS-PAGE and stained with coomassie blue and captured by monochrome camera.


GTX138166-pro ELISA Image

Indirect ELISA analysis was performed by coating the plate with recombinant Human G-CSF protein (active) (GTX138166-pro) (213.9-3.34 nM). Coated protein was probed with G-CSF antibody [GT21] (GTX641067) (1 µg/mL). Goat anti-mouse IgG antibody (HRP) (GTX213111-01) (1:10000) was used to detect the bound primary antibody.


GTX138166-pro ELISA Image

Sandwich ELISA detection of recombinant Human G-CSF protein (active) (GTX138166-pro) using antibodies as below.

Capture: G-CSF antibody [GT21] (GTX641067) (5 µg/mL)

Detection: HRP-conjugated G-CSF antibody [GT22] (GTX641068) (1 µg/mL)

Please notice that GTX641068 needs to be conjugated to HRP to function as the detection antibody when paired with GTX641067. Please contact us for custom HRP-conjugated antibody.



For full product information, images and publications, please visit our [website](https://www.genetex.com).